



# INSTALLATION INSTRUCTIONS

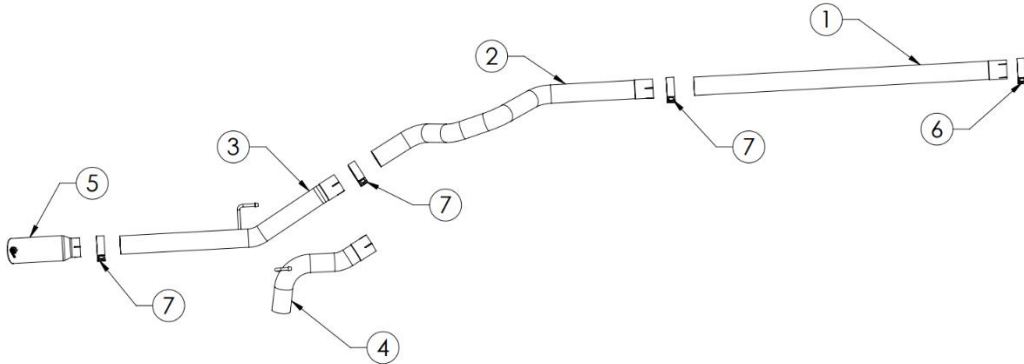
DPF-Back Exhaust

**MAKE:** Mercedes Benz  
**MODEL:** Sprinter 2500/3500  
**YEAR:** 2010-2025  
**ENGINE:** L4-2.0L(td)/L4-2.1L(td)/V6-3.0L(td)

49-36504-B

49-36504-P

**NOTE: Only fits vehicle with 170" Wheelbase**

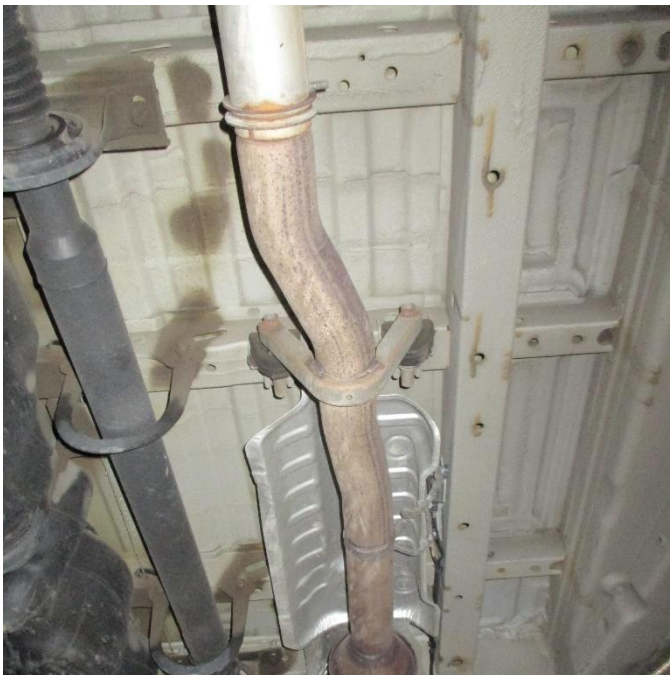


Item	Description	Part Number	Quantity
1	Front Pipe	05-244557	1
2	Mid-Pipe	05-245378	1
3	Tail Pipe (Rear Exit)	05-244558	1
4	Tail Pipe (Side Exit)	05-245379	1
5	EXH Tip 3 In x 4 Out x 12L Bolt-On Blk	49T30404-B121	1
5	EXH Tip 3 In x 4 Out x 12L Bolt-On Pol	49T30404-P121	1
6	Clamp, Band: 2.7" (Modified)	05-410625	1
7	Clamp, Band: 3"	05-41055	2

**aFe POWER recommends professional installation on this product.** Thoroughly inspect the aFe POWER exhaust system to make sure there is no damage from shipping (if damage is noted, immediately contact aFe POWER customer service). Allow time for your vehicle to cool down prior to installation. When working on your vehicle proceed with caution. Wear protective safety equipment; eye goggles and gloves to ensure a safe installation.

Install band clamps to proper torque specifications of 40-45 ft-lb.

Install V-band clamps with anti-seize lubricant and hand tighten only to torque specifications of 10-15 ft-lb.





## INSTALLATION INSTRUCTIONS

**MAKE:** Mercedes Benz  
**MODEL:** Sprinter 2500/3500  
**YEAR:** 2010-2025  
**ENGINE:** L4-2.0L(td)/L4-2.1L(td)/V6-3.0L(td)

**DPF-Back Exhaust**

49-36504-B

49-36504-P

**NOTE: Only fits vehicle with 170" Wheelbase**

1. **(Read instructions prior to installation.)** It is recommended not to fully tighten the exhaust until it has been fully installed. Leave loose for adjustability.
2. Secure vehicle on jack stands (refer to your manual for specified jack stand positions).
3. For faster installation, spread out the parts of the exhaust alongside your vehicle as shown in the diagram above.
4. Secure the stock exhaust with jack/stands.
5. Remove the OE Clamp from OE Exhaust System after the DPF and slide exhaust hanger from the rubber isolation mount in the rear.
6. Remove the O.E. Exhaust system from the vehicle.
7. Using the provided 2.7" Band Clamp, install the aFe Power Front Pipe.
8. Slide aFe Power Mid-pipe into aFe Power Front Pipe and secure with provided 3" Band Clamp.
9. Depending on configuration desired: Slide aFe Power Tail Pipe (Rear/Side Exit) into aFe Power Mid-pipe and secure with provided 3" Band Clamp. Install hanger into Rubber Isolator Mount.
10. Install aFe Power Exhaust Tips.
11. Ensure that all the components of the aFe POWER exhaust system are aligned and are at a safe clearance from all wires, hoses, brake lines, body parts, and tires.
12. Start from the front of the aFe exhaust system and evenly tighten all clamps and fasteners.
13. Start the vehicle and check for any leaks. If any leaks are found, determine cause and repair as necessary.
14. Remove vehicle from jacks stands.
15. It is recommended to re-tighten all clamps and hardware after 50-100 miles.