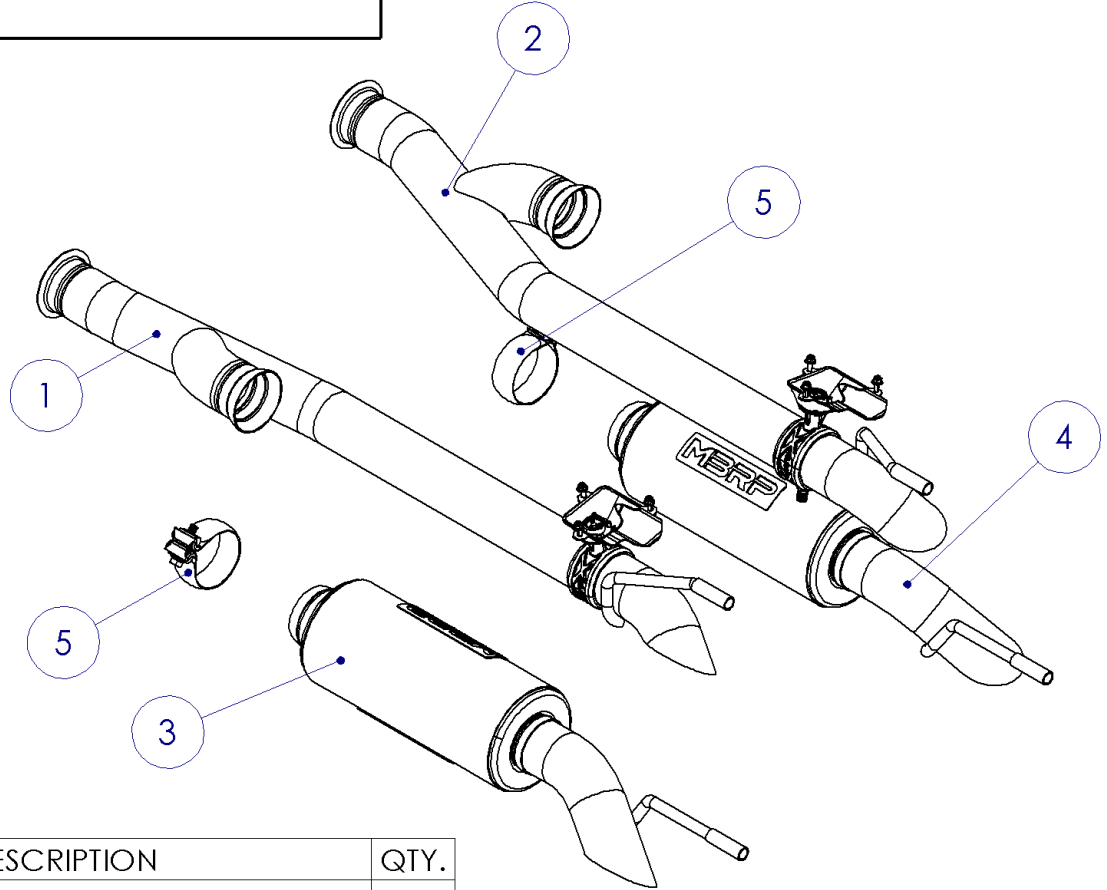


S5601

2019-UP MERCEDES BENZ G63, 4.0 TT V8,
PRE- AXLE, CAT BACK, 2.5" DUAL SPLIT SIDE,
ACTIVE, QUAD OUTLET

MBRP®



ITEM	DESCRIPTION	QTY.
1	DRIVER-SIDE ACTIVE PIPE ASSEMBLY	1
2	PASSENGER-SIDE ACTIVE PIPE ASSEMBLY	1
3	DRIVER-SIDE MUFFLER ASSEMBLY	1
4	PASSENGER-SIDE MUFFLER ASSEMBLY	1
5	INLET CLAMP	2

Refer to this **LOT NUMBER** when contacting customer service: _____

PLEASE READ BEFORE STARTING INSTALLATION

While MBRP has made every effort to ensure that all components of this system are of superior quality and properly packaged, it is the installer's responsibility to ensure the following before removal of the factory exhaust:

- that ALL components shown above are present.
- that ALL mating components fit together.
- that there are no damaged components.
- that the system you have purchased is appropriate for your vehicle year, model and configuration.
- that the system will not interfere with any modifications previously installed or planned.
- that you have read and understand these instructions.

If you have any questions or are uncertain about any aspect of the installation of this system to your vehicle please contact your dealer before commencing installation.

MBRP

Removal of Stock System



Figure 1



Figure 2

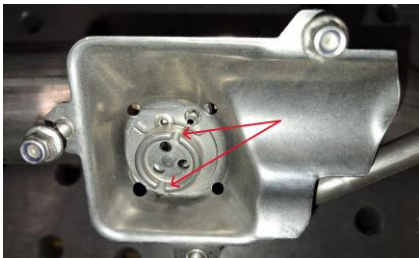


Figure 3

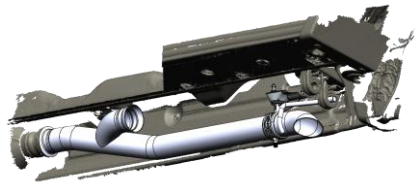


Figure 4

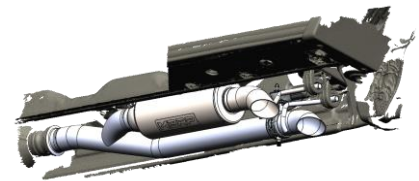


Figure 5



Figure 6

1. Apply penetrating lubricant liberally to all exhaust fasteners, hangers, and rubber insulators.
2. Remove the V band clamp at the inlet of the OE muffler assembly. Lower the inlet of the muffler assembly but **DO NOT REMOVE FROM REAR HANGERS**. Repeat for both driver and passenger sides.
Refer to Figure 1.
3. Disconnect wiring harness from exhaust valve actuator before removing muffler assembly from the vehicle. Repeat for both driver and passenger sides.
Refer to Figure 2.
4. Remove both exhaust valve actuators and drive springs from the OE muffler assemblies. Retain these parts as they will be reused during the installation.

Installation of MBRP Inc. Performance Exhaust:

1. Install a previously removed exhaust valve actuator and drive spring onto the **Driver-Side Active Pipe Assembly**. Be sure the drive spring engages the slots on the valve hub.
Refer to Figure 3.
2. Install the **Driver-Side Active Pipe Assembly** onto the vehicle by first sliding the hanger into the inboard rubber isolator. Loosely secure the inlet to the catalytic converter outlet with an OE V band clamp. Reconnect the electrical connector to the valve actuator.
Refer to Figure 4.
3. Install the **Driver-Side Muffler Assembly** onto the vehicle by first sliding the hanger into the outboard rubber isolator. Loosely secure the inlet to the **Driver-Side Active Pipe Assembly** using a supplied **Inlet Clamp**.
Refer to Figure 5.
4. Rotate and adjust both pipe assemblies as required to provide adequate clearance between all chassis and body components. When installed correctly and viewed from the rear, the angled outlets will be parallel to each other.
Refer to Figure 6.
5. Repeat installation steps 1 through 4 for the Passenger Side components and tighten all clamps.
6. Verify clearances, system security and clamp torque after 30-60 miles (50-100 km) of driving.

Congratulations! You are ready to begin experiencing the improved power, sound and driving experience of your

MBRP Performance Exhaust. We know you will enjoy your purchase!