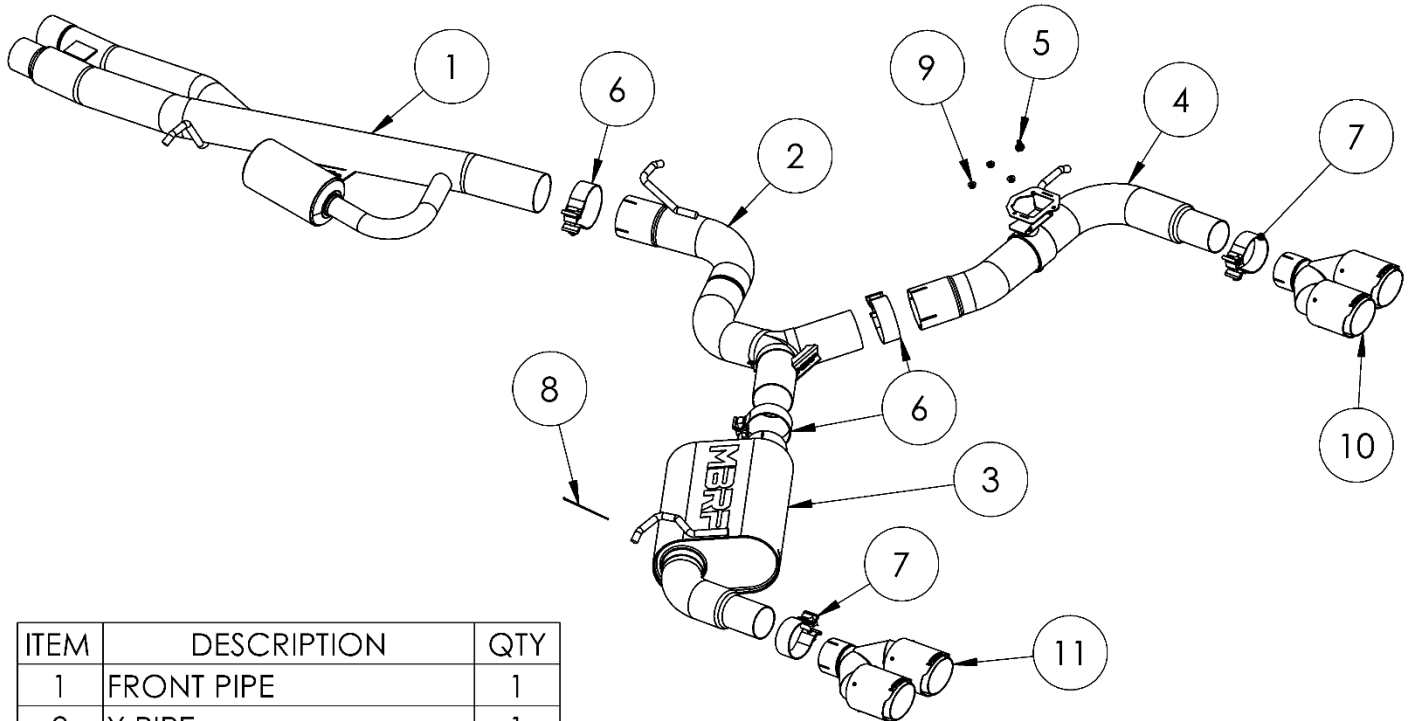


# S4610

2017-2020 AUDI RS3, 2.5T, CAT-BACK, 3.0"  
DUAL SPLIT REAR, QUAD TIPS

# MBRP®



ITEM	DESCRIPTION	QTY
1	FRONT PIPE	1
2	Y PIPE	1
3	DRIVER-SIDE MUFFLER	1
4	PASSENGER-SIDE TAIL	1
5	SPRING HUB	1
6	3.0" CLAMP	3
7	2.5" CLAMP	2
8	CABLE TIE	1
9	M6 FLANGE NUT	3
10	PASSENGER-SIDE TIP	1
11	DRIVER-SIDE TIP	1

## PLEASE READ BEFORE STARTING INSTALLATION

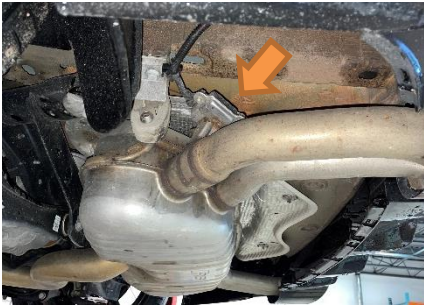
While MBRP has made every effort to ensure that all components of this system are of superior quality and properly packaged, it is the installer's responsibility to ensure the following before removal of the factory exhaust:

- that ALL components shown above are present.
- that ALL mating components fit together.
- that there are no damaged components.
- that the system you have purchased is appropriate for your vehicle year, model and configuration.
- that the system will not interfere with any modifications previously installed or planned.
- that you have read and understand these instructions.

If you have any questions or are uncertain about any aspect of the installation of this system to your vehicle please contact your dealer before commencing installation.

# MBRP

## Removal of Stock System



**Figure 1**

1. Apply penetrating lubricant liberally to all exhaust fasteners, hangers, and rubber insulators.

2. Disconnect the 2 exhaust valve electrical connections at the rear of the vehicle.

**Refer to Figure 1.**



**Figure 2**

3. Loosen the barrel clamps after the catalytic converters and remove the cross brace.

**Refer to Figure 2.**

4. Unbolt the 3 hangers and remove the last hanger while supporting the exhaust.

## Installation of **MBRP** Performance Exhaust

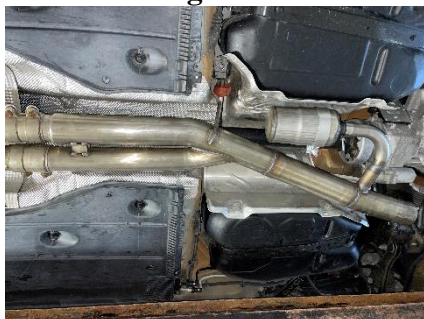


**Figure 3**

1. Remove a valve actuator from the factory system to install onto the **Passenger-Side Tail** using the supplied **Spring Hub** and the **M6 Flange Nuts**. **Refer to Figure 3.**

2. Install the forward-most factory insulator onto the **Front Pipe**. Loosely attach the front pipe to the catalytic converters using the factory barrel clamps. Re-attach the insulator to the vehicle.

**Refer to Figure 4.**



**Figure 4**

3. Loosely attach the **Y-Pipe** with a **3.0" Clamp** and mount onto the factory insulator.

**Refer to Figure 5.**



**Figure 5**

# MBRP



Figure 6



Figure 7



Figure 8

4. Attach the factory insulator to the **Passenger-Side Tail** and loosely attach to the **Y-Pipe** with a **3.0" Clamp**. Tighten the insulator bolt into its factory position. Repeat these steps for the **Driver-Side Muffler**. Plug in the valve actuator to the factory wiring and tie up the wire on driver-side that was previously used for the valve actuator with the supplied **Cable Tie**. Refer to **Figures 6 & 7**.

5. Loosely install the **Tips** with the **2.5" Clamps**. Refer to **Figure 8**.

6. Carefully align the system and tips. Align the edge of each band clamp with the edge of the joint it is connecting. Tighten all hardware and clamps, starting at the front and working rearward to secure the system. Check along the full length of the exhaust system to ensure there is adequate clearance for fuel lines, vent lines, brake lines, frame, bodywork, suspension and any wiring, etc. If there is any interference detected, relocate or adjust to provide adequate clearance. Ensure all clamp connections are secure and components are unable to rotate or slide. Band clamps require approximately 45 lb-ft (60 N-m) of torque. Verify clearances, system security and band clamp torque after 30-60 miles (50-100 km) of driving.



**Congratulations!** You are ready to begin experiencing the improved power, sound and driving experience of your **MBRP** Performance Exhaust. We know you will enjoy your purchase!