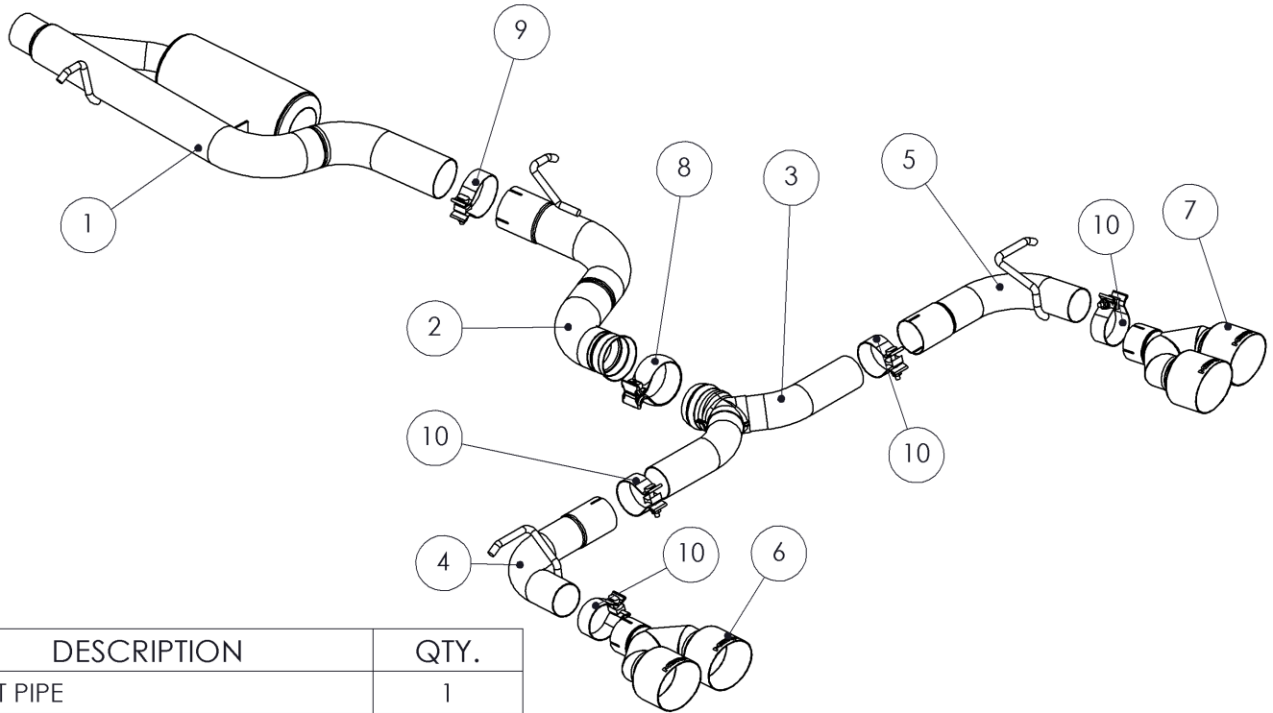


S4603

2015-19 VW Golf R MK7/MK7.5 CAT BACK - VALVE DELETE

MBRP



ITEM	DESCRIPTION	QTY.
1	FRONT PIPE	1
2	EXTENSION PIPE	1
3	Y PIPE	1
4	DRIVER-SIDE TAILPIPE	1
5	PASSENGER-SIDE TAILPIPE	1
6	DRIVER-SIDE TIP	1
7	PASSENGER-SIDE TIP	1
8	3.0" SWIVEL CLAMP	1
9	3.0" CLAMP	1
10	2.5" CLAMP	4
11	VALVE SIMULATOR *NOT SHOWN*	2

PLEASE READ BEFORE STARTING INSTALLATION

While MBRP has made every effort to ensure that all components of this system are of superior quality and properly packaged, it is the installer's responsibility to ensure the following before removal of the factory exhaust:

- that ALL components shown above are present.
- that ALL mating components fit together.
- that there are no damaged components.
- that the system you have purchased is appropriate for your vehicle year, model and configuration.
- that the system will not interfere with any modifications previously installed or planned.
- that you have read and understand these instructions.

If you have any questions or are uncertain about any aspect of the installation of this system to your vehicle please contact your dealer before commencing installation.

MBRP

Removal of Stock System



Figure 1

1. Apply penetrating lubricant liberally to all exhaust fasteners, hangers and rubber isolators.

2. Disconnect wiring harness from both exhaust valve actuators.
Refer to Figure 1.

3. Loosen band clamp at the inlet of the OEM cat back exhaust.
Refer to Figure 2.

4. Remove the front and mid hangers from their rubber isolators. Leave both muffler hangers attached at this time.

5. Unbolt both rear muffler hangers from the vehicle and remove the complete cat back exhaust from the vehicle. Remove the OEM band clamp and both rear muffler hangers from the OEM cat back as these will be reused during the installation of your **MBRP** performance exhaust.

Refer to Figure 3.



Figure 2

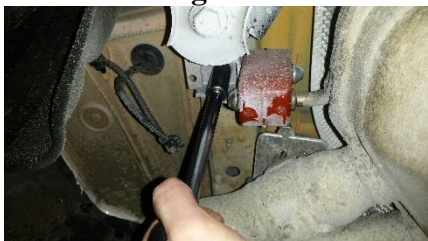


Figure 3

Installation of MBRP Performance Exhaust

1. Using the OEM band clamp, install the **Front Pipe**. Do not fully tighten until all parts are installed. Install the hanger into the rubber isolator.
Refer to Figure 4.

2. Using a 3" **Clamp**, install the **Extension Pipe** onto the outlet of the **Front Pipe** and insert the hanger into the OEM isolator.

3. Using a 3" **Swivel Clamp**, install the **Y-Pipe** onto the outlet of the **Extension Pipe**.
Refer to Figure 5.

4. Install one of the OEM muffler hangers onto the **Driver-Side Tailpipe** and install the assembly onto the **Y Pipe** with a 2.5" **Clamp**. Secure the OEM hanger assembly to the vehicle with the previously removed bolt.
Refer to Figure 6.

NOTE; The OEM hanger assemblies have slotted mounting holes that can be used to center the tips in the rear facia when the installation is complete.



Figure 4



Figure 5

MBRP

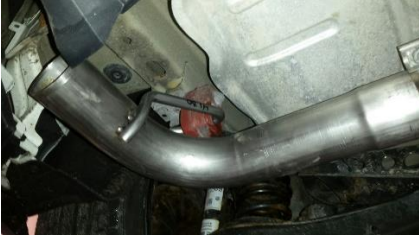


Figure 6

5. Repeat Step 4 for the **Passenger-Side Tailpipe**.

Note: This system requires different tailpipe positions for MK7/MK7.5 installations. Adjust the tailpipe positions on the Y Pipe to center the tips in the rear fascia.

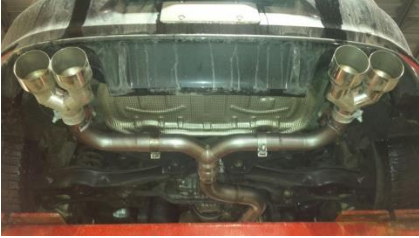


Figure 7

6. Install the **Tips** and align to your preference.
Refer to Figure 7.

7. Plug the two **Valve Simulators** into the wiring harness and secure the wiring out of the way with cable ties.

Refer to Figure 8.



Figure 8

8. Tighten all hardware and clamps, starting at the front and working rearward to secure the system. Check along the full length of the exhaust system to ensure there is adequate clearance for fuel lines, vent lines, brake lines, frame, bodywork, suspension and any wiring, etc. If there is any interference detected, relocate or adjust to provide adequate clearance.

Congratulations! You are ready to begin experiencing the improved power, sound and driving experience of your **MBRP** Performance Exhaust.
We know you will enjoy your purchase!