

Installation Instructions

For set # 8.3127
87-92 Toyota Supra
Rear Control Arm/Link Bushings



1131 VIA CALLEJON, SAN CLEMENTE, CA 92673

© 2011 Energy Suspension. All rights reserved.
May not be reproduced, in any form, or by any means,
without the written consent of Energy Suspension.

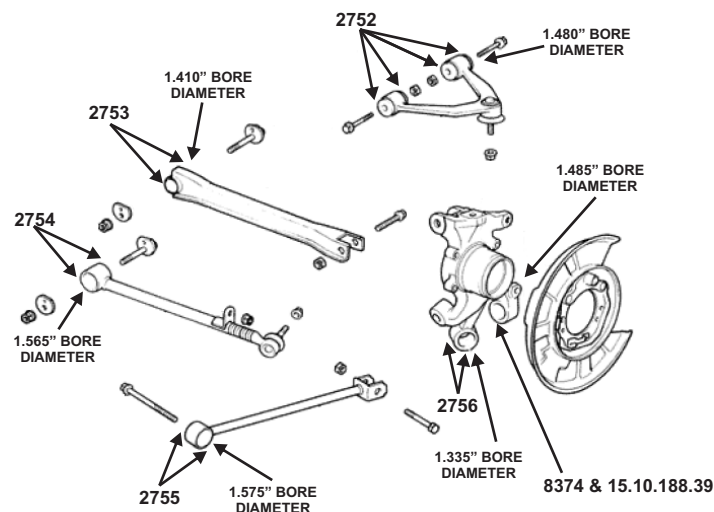
It is recommended that if you are unfamiliar with this type of work that you refer to a qualified service center specializing in this type of work. It is also recommended that if you choose to do this work yourself that a factory service manual be obtained for the proper procedures pertaining to removal, replacement and proper torque specifications for your vehicle. This instruction sheet is intended as a guideline for the safe installation of Energy Suspension's polyurethane bushings, once you have removed the factory suspension components from your vehicle. Wheel alignment is almost always disturbed when suspension components are removed or replaced. It is recommended that you have the alignment checked on your vehicle at a qualified alignment shop.

Parts list:

- 8 ea 2752 (Upper Control Arm Bushing - .250" Flg)
- 4 ea 2753 (Lateral Link Bushing, Inboard - .140" Flg)
- 4 ea 2754 (Rear Toe Link Bushing - .150" Flg)
- 4 ea 2755 (Rear Trailing Link Bushing - .200" Flg)
- 4 ea 2756 (Spindle to Rear Trailing Link Bushing - .200" Flg)
- 2 ea 8374 (Lateral Link Bushing, Outboard - .420" Flg)
- 10ea 15.10.167.39 (.875 x .562 x 1.960 Sleeve)
- 2 ea 15.10.20.39 (.875 x .562 x 1.800 Sleeve)
- 2 ea 15.10.188.39 (.875 x .562 x 1.875 Sleeve)
- 4 ea 9.11108 (Formula 5 Pre-lube)
- 1 ea 17522 (Instructions)

UPPER CONTROL ARMS

Using a hydraulic press, remove both bushing and sleeve. Clean and lube I.D of control arm, install poly bushings, lube I.D of poly bushings and install supplied sleeve.



LOWER LINKS and SPINDLE



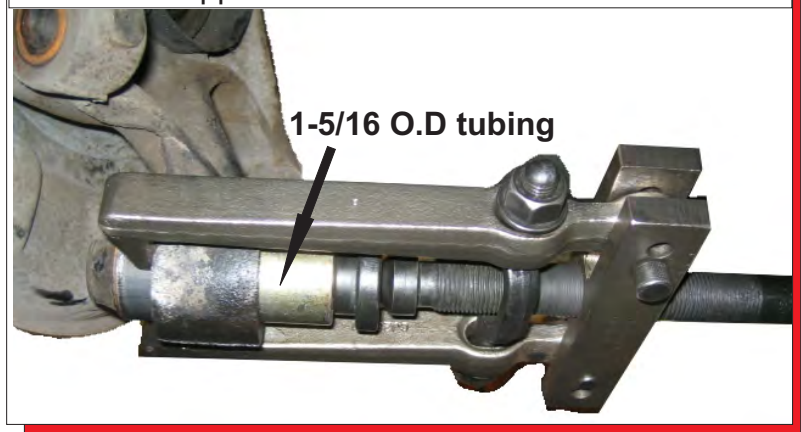
When pressing out bushings and shells, it is good practice to remove and replace one at a time to maintain good rear alignment. Mark cam eccentrics prior to removal to aid in re-alignment.

Use a hydraulic press and a few different tubing sizes to press out bushings and shells from different positions.

- 1.400" O.D for upper control arm and rear lateral link
- 1.500" O.D for rear toe link and

Use a puller tool (pictured below) with a 1-5/16" O.D tubing to press out the spindle to trailing arm bushing and shell. This can be done without removing the rear spindle from car.

Lubricate the inside diameter of spindle eye and install poly bushings, lubricate inside diameter of bushing and install supplied sleeve.



NOTE:

! CHECK SPHERICAL BEARING PRIOR TO PRESSING OUT !
IF TIGHT, DO NOT REPLACE

17522

20/JAN/16 MAX ECN 16006