

Installation Instructions

For set # 7.3112

00-03 NISSAN SENTRA

CA/XE/GXE/SE/LIMITED EDITION/SE-R/SE-R SPEC V

ENERGY
SUSPENSION

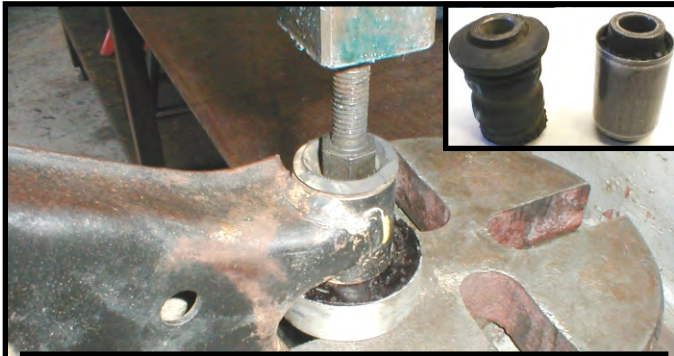
1131 VIA CALLEJON, SAN CLEMENTE, CA 92673

It is recommended that if you are unfamiliar with this type of work that you refer to a qualified service center specializing in this type of work. It is also recommended that if you choose to do this work yourself that a factory service manual be obtained for the proper procedures pertaining to removal, replacement and proper torque specifications for your vehicle. This instruction set is intended as a guideline for the safe installation of Energy Suspension's polyurethane bushings, once you have removed the factory components from your vehicle.

B.O.M.

4 EA 2485 (Front position) / 2 EA 15.10.168.39 Sleeve, front position (.875"O.D. X .563" I.D. X 2.150"LG)
2 EA 3410 (Rear position) / 2 EA 15.03.93.39 Washer, rear position (1.750"O.D. X .843" I.D. X .125"THK.)
6 EA 9.11108 Grease / 1 EA 17362 Instructions.

© 2004 Energy Suspension. All rights reserved.
May not be reproduced, in any form, or by any means,
without the written consent of Energy Suspension.



Nissan used 2 different bushings in the front position. One has an outer metal shell and must be pressed out. The other does not have an outer metal shell and can be pushed out with an arbor press. The I.D. of the O.E. control arm is $\varnothing 1.265$ " and is the same size for both.



With an arbor press, apply some pressure to rear pin of control arm. Using a razor knife, cut the rubber bushing to separate the 2 parts.

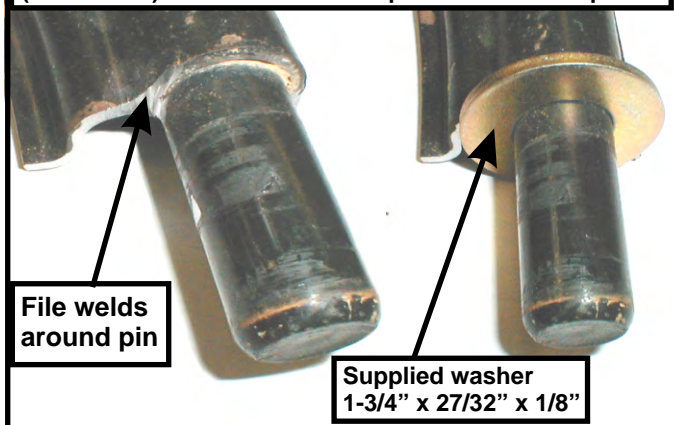


Outer metal shell of O.E. bushing must be removed. I.D. of casting for rear bushing is $\varnothing 1.930$ ". After pressing out OE bushing, remove all sharp edges from casting.



The sleeve will need to come off the rear pin. It's a tight press fit. With a hammer and chisel, make a groove along its length, this will relieve the press fit. The sleeve will then slide off by hand.

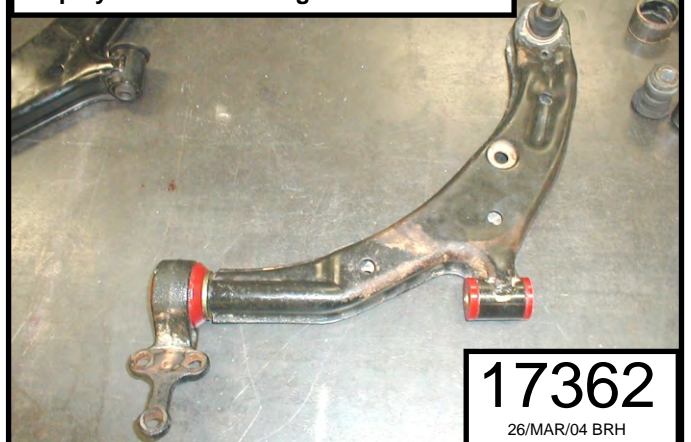
Weld needs to be filed or ground for new supplied washer (15.03.93.39) that will sit flat and parallel to welded pin



File welds around pin

Supplied washer
1-3/4" x 27/32" x 1/8"

Apply grease to all metal parts that contact the polyurethane bushings.



17362

26/MAR/04 BRH