

INSTRUCTION SHEET FOR SET #5.7115

Read this instruction sheet thoroughly before initiating any work!

It is recommended that if you are unfamiliar with this type of work that you refer to a qualified service center specializing in this type of work. It is also recommended that if you choose to do this work yourself that a factory service manual be obtained for the proper procedures pertaining to removal, replacement and proper torque specifications for your vehicle. This instruction set is intended as a guideline for the safe installation of Energy Suspension's Polyurethane.

ENERGY
SUSPENSION 

1131 VIA CALLEJON, SAN CLEMENTE, CA 92673

© 2005 Energy Suspension. All rights reserved.
May not be reproduced, in any form, or by any means,
without the written consent of Energy Suspension.

PARTS LIST:

- 2 - 7121 Trailing Arm Bushings (2.710"o.a.l.)
- 2 - 15.10.549.39 (0.875"x0.563"x2.750")
- 1 - 17467 Instruction sheet
- 2 - 9.11108 Grease packets

REMOVAL

With the vehicle safely supported and the rear wheels off the ground, remove the two bolts for the trailing arm. (Point A and B) Remove arm. Using a hydraulic press, remove rubber bushing & shell from arm.(C) The arm I.D. is $\varnothing 2.563$ "

INSTALLATION

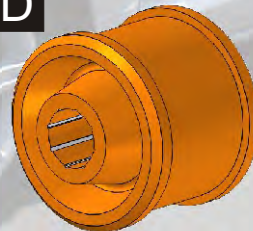
Grease the I.D. of the arm very lightly, *if you apply a lot, it is a waste, because it will all be pushed out as the bushing is being pressed in. Grease the O.D. & I.D. of the Energy Suspension® bushing. (D) First install the bushing, using an arbor press, make sure the flanges "pop" out both sides fully, then press in the sleeve. Now reinstall the arm and tighten the bolts according to factory specifications.

C



OEM Rubber

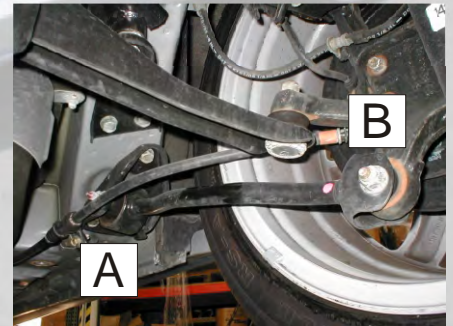
D



Energy Bushing



Trailing Arm



1 7467

122805

Bushing not supplied for position B

INSTRUCTION SHEET FOR SET #5.7115

Read this instruction sheet thoroughly before initiating any work!

It is recommended that if you are unfamiliar with this type of work that you refer to a qualified service center specializing in this type of work. It is also recommended that if you choose to do this work yourself that a factory service manual be obtained for the proper procedures pertaining to removal, replacement and proper torque specifications for your vehicle. This instruction set is intended as a guideline for the safe installation of Energy Suspension's Polyurethane.

ENERGY
SUSPENSION 

1131 VIA CALLEJON, SAN CLEMENTE, CA 92673

© 2005 Energy Suspension. All rights reserved.
May not be reproduced, in any form, or by any means,
without the written consent of Energy Suspension.

PARTS LIST:

- 2 - 7121 Trailing Arm Bushings (2.710"o.a.l.)
- 2 - 15.10.549.39 (0.875"x0.563"x2.750")
- 1 - 17467 Instruction sheet
- 2 - 9.11108 Grease packets

REMOVAL

With the vehicle safely supported and the rear wheels off the ground, remove the two bolts for the trailing arm. (Point A and B) Remove arm. Using a hydraulic press, remove rubber bushing & shell from arm.(C) The arm I.D. is $\varnothing 2.563$ "

INSTALLATION

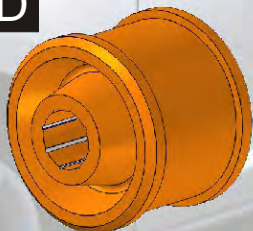
Grease the I.D. of the arm very lightly, *if you apply a lot, it is a waste, because it will all be pushed out as the bushing is being pressed in. Grease the O.D. & I.D. of the Energy Suspension® bushing. (D) First install the bushing, using an arbor press, make sure the flanges "pop" out both sides fully, then press in the sleeve. Now reinstall the arm and tighten the bolts according to factory specifications.

C



OEM Rubber

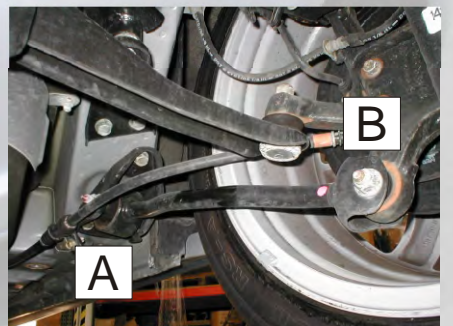
D



Energy Bushing



Trailing Arm



1 7467

122805

Bushing not supplied for position B