

Installation instructions

For set # 5.3141 LX REAR SET



1131 VIA CALLEJON, SAN CLEMENTE, CA 92673

© 2010 Energy Suspension. All rights reserved.
May not be reproduced, in any form, or by any means,
without the written consent of Energy Suspension.

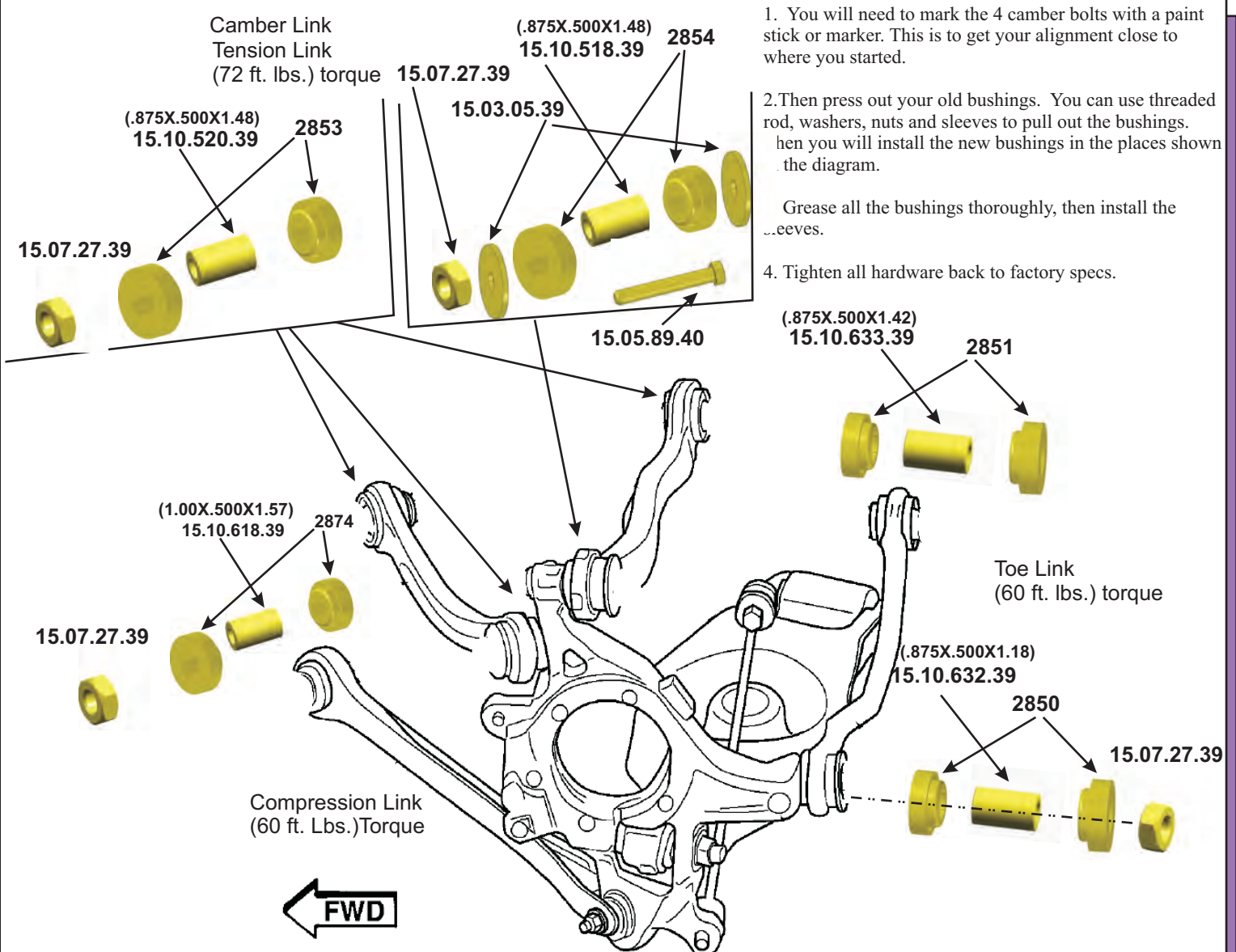
It is recommended that if you are unfamiliar with this type of work that you refer to a qualified service center specializing in this type of work. It is also recommended that if you choose to do this work yourself that a factory service manual be obtained for the proper procedures pertaining to removal, replacement and proper torque specifications for your vehicle. This instruction set is intended as a guideline for the safe installation of Energy Suspension's polyurethane bushings, once you have removed the factory components from your vehicle.

Parts list:

12-2853 RR TENSION LK
4-2854 CAMBER LINK
4-2851 TOE LINK INNER
4-2852 TOE LINK OUTER
4-2874 COMPRESSION LINK

4-2855 SPRING LINK
2-15.10.632.39 TOE LINK OUTER
2-15.10.633.39 TO LINK INNER
6-15.10.520.39 CAMBER TENSION ARM
2-15.10.618.39 COMPRESSION LINK FWD
2-15.10.518.39 OUTER CAMBER

12-15.07.27.40 FLANGED LOCKNUT
4-15.03.05.39 WASHER
2-15.05.89.40 BOLT
1-17556 INSTRUCTIONS 3-9.11113 GREASE



1. You will need to mark the 4 camber bolts with a paint stick or marker. This is to get your alignment close to where you started.

2. Then press out your old bushings. You can use threaded rod, washers, nuts and sleeves to pull out the bushings. When you will install the new bushings in the places shown the diagram.

Grease all the bushings thoroughly, then install the sleeves.

4. Tighten all hardware back to factory specs.

17566

29/MAR/11 BO