

Installation Instructions

For sets # 4.4101, 4.4106 & 4.4110

66-77 Ford Bronco Body Mount Bushing Set



1131 VIA CALLEJON, SAN CLEMENTE, CA

© 2011 Energy Suspension. All rights reserved.
May not be reproduced, in any form, or by any means,
without the written consent of Energy Suspension.

It is recommended that if you are unfamiliar with this type of work that you refer to a qualified service center specializing in this type of work. It is also recommended that if you choose to do this work yourself that a factory service manual be obtained for the proper procedures pertaining to removal, replacement and proper torque specifications for your vehicle. This instruction sheet is intended as a guideline for the safe installation of Energy Suspension's polyurethane bushings, once you have removed the factory suspension components from your vehicle. Wheel alignment is almost always disturbed when suspension components are removed or replaced. It is recommended that you have the alignment checked on your vehicle at a qualified alignment shop.

Parts List*

8 ea 4025 Bushing (0.775" Flange)
8 ea 4026 Bushing (0.750 Over All Length)
8 ea 15.10.59.39 (.875 OD x .750 ID x 1.500 L Sleeve)
8 ea 15.03.07.39 (2.500 x 7/16 Washer)
8 ea 15.03.09.39 (2.000 x 7/16 Washer)

8 ea 15.03.04.39 (1.125 x 7/16 Washer)
4 ea 15.05.08.39 (7/16-14 x 3" Bolt)
4 ea 15.05.09.39 (7/16-14 x 4" Bolt)
8 ea 15.07.02.40 (7/16-14 Nylock Nut)
1 ea 17030 (Instructions)

4.4101-Bushings Only, 4.4106-Hardware Only, 4.4110-Bushings & Hardware

Spray all nuts to be removed generously with your favorite rust buster.

Note: When disassembling, note the quantity and positions of any shims that may have been inserted for body alignment. These shims **MUST** be reused to ensure proper body alignment.

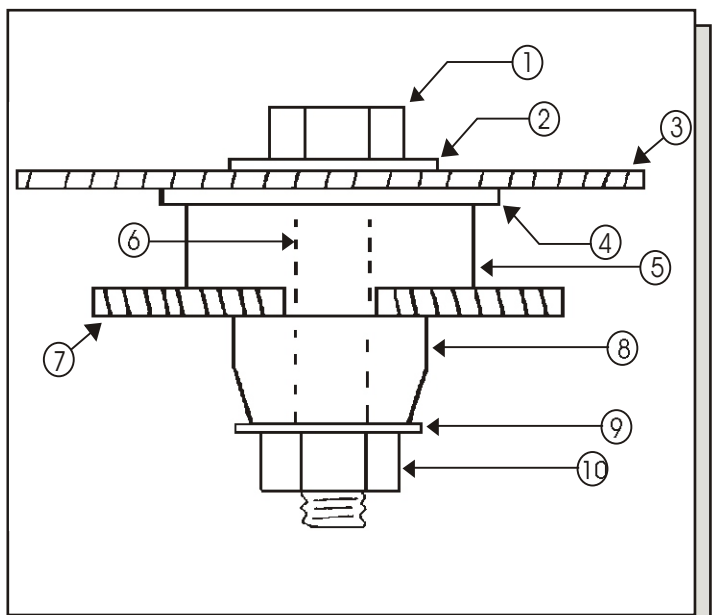
CAUTION! Only raise body high enough to remove & replace mounts. Always watch the fan shroud for sufficient clearance when raising the body. When jacking the body use a long enough 2X4 or 4X4 for maximum support. Never put jack directly on body panels.

Install mounts one side at a time with bolts on other side loosened only.

Re-torque all bolts to factory specifications.

Assembly Order

1. A. The four forward mounting positions use 7/16-14 x 3" bolts.
B. The four rear mounting positions use 7/16-14 x 4" bolts.
2. 1.125" O.D. Washer
3. Body Sheet Metal
4. 2.500" O.D. Washer
5. 4025 Body Mount Bushing
6. 1-1/2" long sleeve-all 8 same.
7. Frame
8. 4026 Conical Body Mount Bushing
9. 2.000" O.D. Washer
10. 7/16-14 Nylon Locking Nut



17030

7/APR/11 MAM