

Installation Instructions for Set # 3-7101, 3-7102

63-74 Corvette (1-1/2" rod eye)

75-82 Corvette (1-3/4" rod eye)

ENERGY
SUSPENSION 

1131 VIA CALLEJON, SAN CLEMENTE, CA 92673

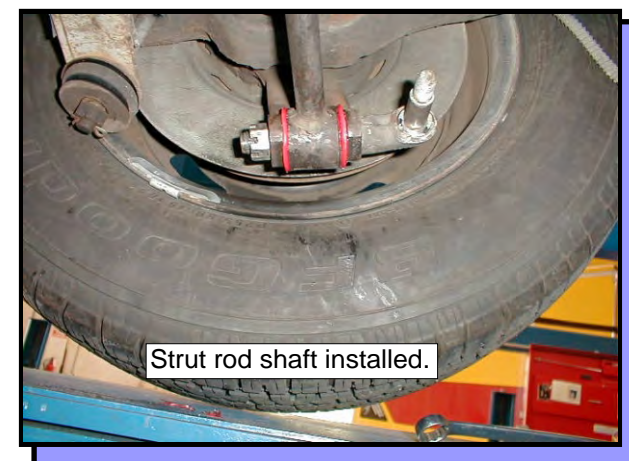
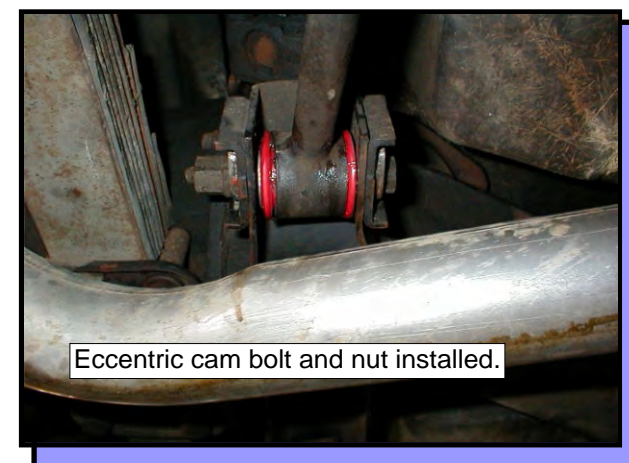
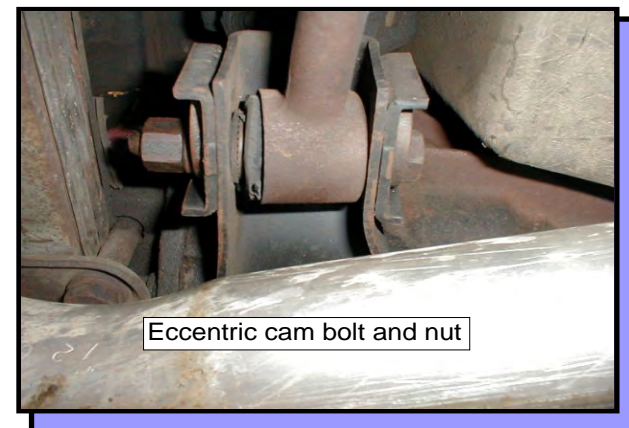
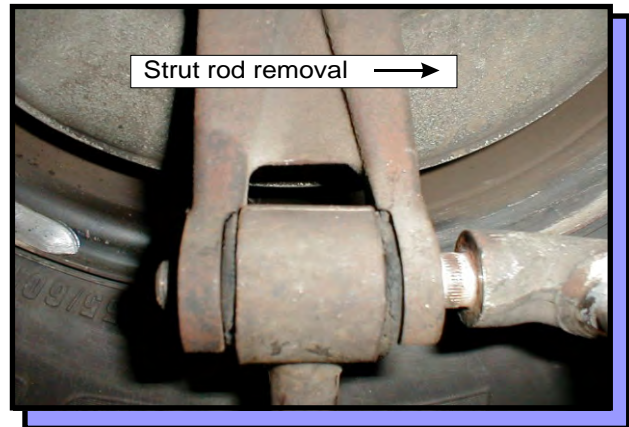
Parts list:

- 8 - 7005 bushings (vehicles with 1-1/2" O.D. Rod eye)
- 8 - 7115 bushings (vehicles with 1-3/4" O.D. Rod eye)
- 4 - 15.10.53.39 (.875" x .625" x 1.675" sleeve)
- 4 - 15.03.99.39 (1.295" x .500" cap washers)
- 2 - 15.08.88.40 (1/8" Dia. x 1-1/4" Lg. Cotter pin)
- 2 - 9-11108 grease.

The parts in this list are packaged as set 3.7118 also sold in master set 3.18123

Note: It is recommended that a factory service manual be purchased prior to performing any work on your car or truck.

1. Properly support vehicle on the frame.
2. Disconnect the shock lower eye from strut rod shaft.
3. Remove strut rod shaft cotter pin and nut. Remove shaft by pulling toward front of vehicle.
4. Mark position of the eccentric cam bolt assembly and brackets, so they may be reassembled in same position.
5. Loosen eccentric cam bolt and nut. Pull strut rod down out of bracket and remove old cap washers.
3. Remove the old rubber bushing and sleeves from the strut rod ends. A press may be needed depending on the condition of the old rubber bushings.
4. Clean the strut rod ends and grease the inside of the eyes. Grease all sides of the bushings that contact metal and outside of the supplied metal sleeve.
5. Press in the Energy Suspension bushings. Note: the bushings have a part number engraved in them. The engraved side on each bushing must be facing each other when fully assembled.
6. Install the supplied cap washers on one side of the strut rod and slide into bracket. Install cam and bolt assembly and adjust cam to line up with marks on bracket. Torque cam bolts to 65 Lb.
7. Install other end of strut rod into spindle fork and insert strut rod shaft into fork so that both flats line up properly. Install slotted nut. Torque strut rod shaft to 75 Lb. Plus additional torque needed to line up cotter pin hole. Then install new cotter pin through rod bolt.
8. Install lower shock eye onto strut rod shaft with washer and nut and torque to 35ft lb.
9. Energy Suspension recommends a four wheel alignment at a qualified service center.



© 2002 Energy Suspension. All rights reserved.
May not be reproduced, in any form, or by any means,
without the written consent of Energy Suspension.

17326
29/JAN/07 BRH