

## Set # 3-4146

### Removal

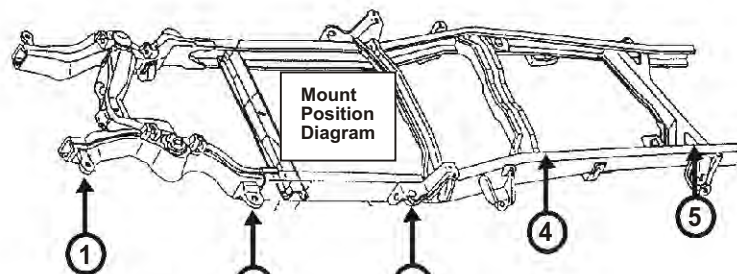
**Spray all nuts to be removed generously with your favorite rust buster.**

**Note:** When disassembling, note the quantity and positions of any shims that may have been inserted for body alignment. These shims will have to be reused to insure proper body alignment.

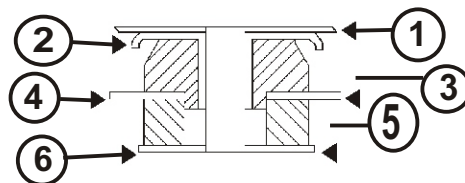
**Remember:** Only raise body high enough to remove & replace mounts. Always watch the fan shroud for sufficient clearance when raising the body. When jacking the body use a long enough 2X4 or 4X4 for maximum support. Never put jack directly on body panels.

Install mounts one side at a time with bolts on other side loosened only.

**Retorque to factory specs.**



Must remove turnsignal light bucket from front of vehicle to access bolt at # 1 position.



Parts Diagram  
(refer below)

**Must reuse factory hardware.**

#### Position # 1

1. Body
2. Factory washer with sleeve
3. 4076
4. Frame
5. 4078
6. Factory washer

#### Position #2-5

1. Body
2. Factory washer with sleeve
3. 4076
4. Frame
5. 4079
6. Factory washer

INST.#17243

## Set # 3-4146

### Removal

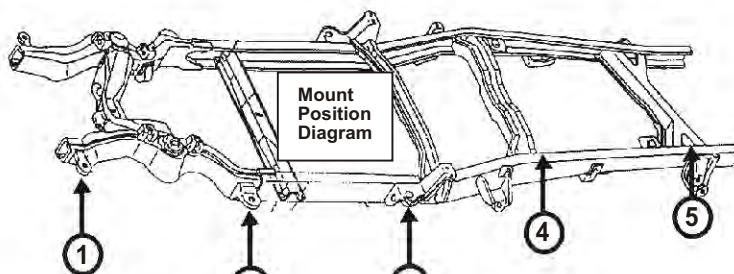
**Spray all nuts to be removed generously with your favorite rust buster.**

**Note:** When disassembling, note the quantity and positions of any shims that may have been inserted for body alignment. These shims will have to be reused to insure proper body alignment.

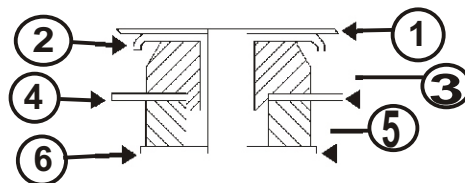
**Remember:** Only raise body high enough to remove & replace mounts. Always watch the fan shroud for sufficient clearance when raising the body. When jacking the body use a long enough 2X4 or 4X4 for maximum support. Never put jack directly on body panels.

Install mounts one side at a time with bolts on other side loosened only.

**Retorque to factory specs.**



Must remove turnsignal light from front of vehicle to access bolt at # 1 position.



Parts Diagram  
(refer below)

**Must reuse factory hardware.**

#### Position # 1

1. Body
2. Factory washer with sleeve
3. 4067
4. Frame
5. 4068
6. Factory washer

#### Position #2-5

1. Body
2. Factory washer with sleeve.
3. 4076
4. Frame
5. 4079
6. Factory washer

INST.#17243