

**Set # 3-4145**

We recommend, if you are unfamiliar with this type of work, that you refer to a qualified service center specializing in this type of work. It is also recommended, if you choose to do this work yourself, that a factory service manual be obtained for the proper procedures pertaining to removal, replacement and proper torque specifications for your vehicle. This instruction set is intended as a guideline for the safe installation of Energy Suspension's polyurethane bushings, once you have removed the factory components from your vehicle.

**Removal**

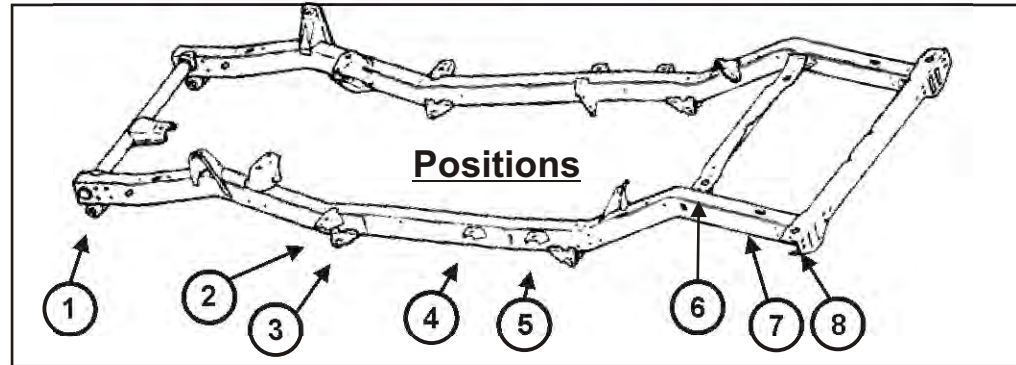
Spray all nuts to be removed generously with your favorite rust buster.

**Note:** When disassembling, note the quantity and positions of any shims that may have been inserted for body alignment. These shims will have to be reused to insure proper body alignment.

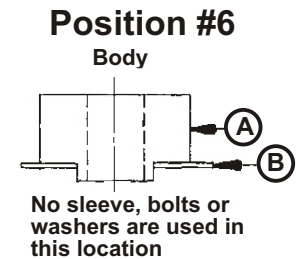
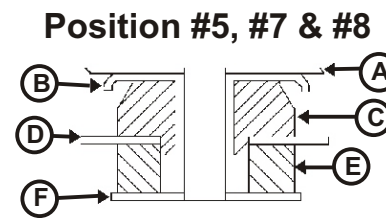
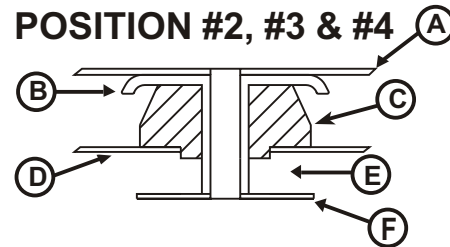
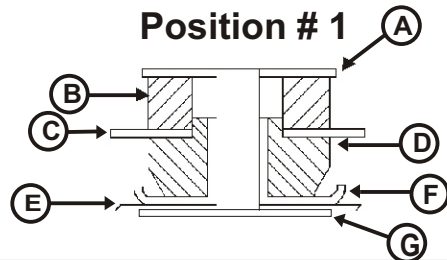
**Remember:** Only raise body high enough to remove & replace mounts. Always watch the fan shroud for sufficient clearance when raising the body. When jacking the body use a long enough 2X4 or 4X4 for maximum support. Never put jack directly on body panels.

Install mounts one side at a time with bolts on other side loosened only.

Retorque to factory specs.



01/MAY/08 NK  
17237



**POSITION # 1**

- A. Factory washer
- B. 4116
- C. Core support bracket
- D. 4115
- E. Factory washer w/sleeve
- F. Frame
- G. Factory shims

**POSITION #2 and #4**

- A. Body
- B. Factory washer w/sleeve
- C. 4113
- D. Frame
- E. No bushing
- F. Factory washer

**POSITION #3**

- A. Body
- B. Factory washer w/sleeve
- C. 4141
- D. Frame
- E. No bushing
- F. Factory washer

**POSITION #5 & #7**

- A. Body
- B. Factory washer w/sleeve
- C. 4113
- D. Frame
- E. 4114
- F. Supplied washer (2"O.D. x 1/2" I.D.)

**POSITION #6**

- A. 4140
- B. Frame

**POSITION #8**

- A. Body
- B. Factory washer w/sleeve
- C. 4141
- D. Frame
- E. 4142
- F. Supplied washer (2"O.D. x 1/2" I.D.)