

REMOVAL

SET #3-4134

*SPRAY GENEROUSLY ALL NUTS TO BE REMOVED WITH YOUR FAVORITE RUST BUSTER.

NOTE: BE SURE ON DISASSEMBLY TO NOTE THE QUANTITY AND POSITIONS OF ANY SHIMS THAT MAY HAVE BEEN INSERTED FOR BODY ALIGNMENT. THESE SHIMS WILL HAVE TO BE RE-USED TO INSURE PROPER BODY ALIGNMENT.

REMEMBER: ONLY RAISE BODY HIGH ENOUGH TO REMOVE & REPLACE MOUNTS. ALWAYS WATCH THE FAN SHROUD FOR SUFFICIENT CLEARANCE WHEN RAISING BODY. WHEN JACKING BODY USE A LONG ENOUGH 2X4-4X4 FOR MAXIMUM SUPPORT. NEVER PUT JACK DIRECTLY ON BODY PANELS.

MUST RE-USE ORIGINAL HARDWARE (WHEN SPECIFIED)

RETORQUE TO FACTORY SPECS.

POSITION #1

- 1- FACTORY WASHER
- 2- 4045
- 3- BRACKET
- 4- 4042
- 5- FACTORY WASHER W/SLEEVE
- 6- FRAME

POSITION #2, #3, #4, #5

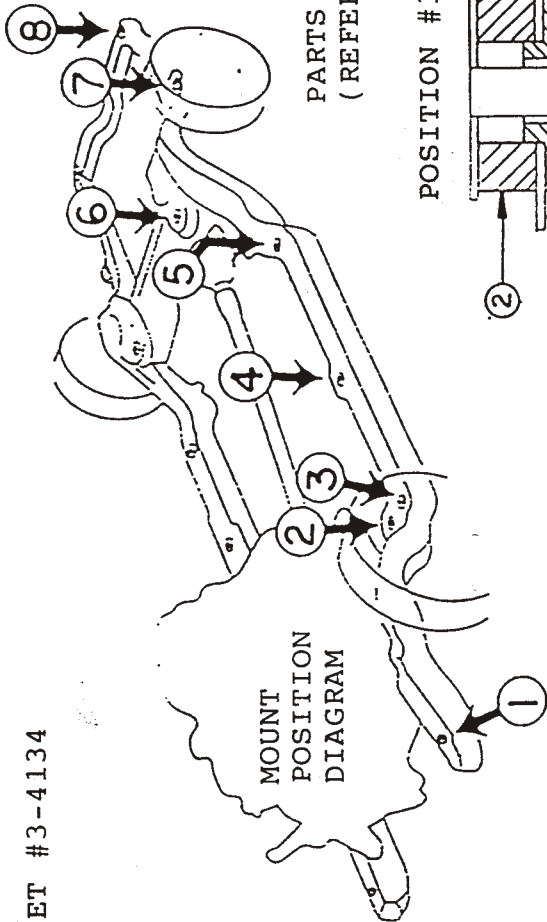
- 1- BODY
- 2- FACTORY WASHER W/SLEEVE
- 3- 4042
- 4- FRAME
- 5- 4045
- 6- FACTORY WASHER

POSITION #6

NOT USED

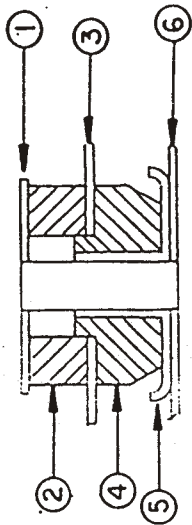
POSITION #7 & #8

- 1- BODY
- 2- FACTORY WASHER W/SLEEVE
- 3- 4041
- 4- FRAME
- 5- 4044
- 6- FACTORY WASHER

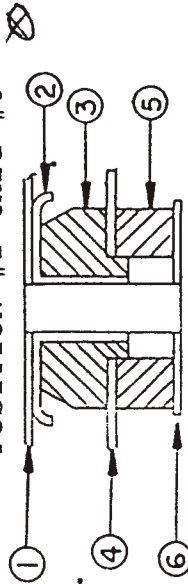


PARTS DIAGRAMS (REFER BELOW)

POSITION #1



POSITION #2 thru #8



INSTALL MOUNTS ONE SIDE AT A TIME WITH BOLTS ON OTHER SIDE LOOSENED ONLY.