

Installation instructions

For set # 3.4118

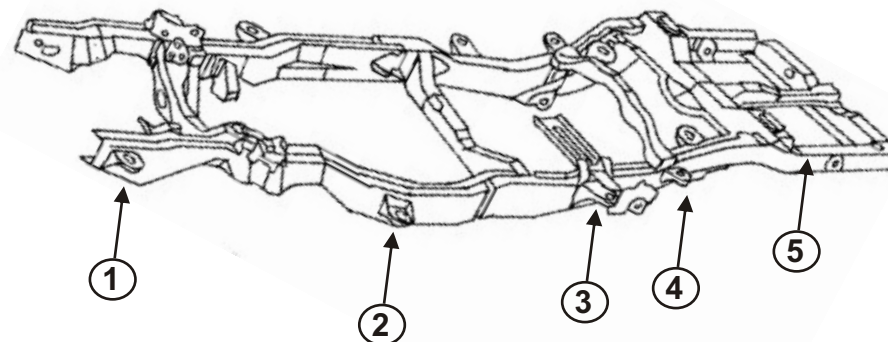
It is recommended that if you are unfamiliar with this type of work that you refer to a qualified service center specializing in this type of work. It is also recommended that if you choose to do this work yourself that a factory service manual be obtained for the proper procedures pertaining to removal, replacement and proper torque specifications for your vehicle. This instruction set is intended as a guideline for the safe installation of Energy Suspension's polyurethane bushings, once you have removed the factory components from your vehicle.

© 2007 Energy Suspension. All rights reserved.
May not be reproduced, in any form, or by any means, without the written consent of Energy Suspension.

Step 1: Loosen all 10 body mount positions but do not remove the nuts and bolts entirely. Remove the nuts and bolts from the 5 positions on one side and leave the other side loose.

Step 2: Use a jack and wood block to lift the body high enough off the frame to remove the original mounts.

CAUTION: Watch the fan shroud and electrical wiring for sufficient clearance when raising the body.

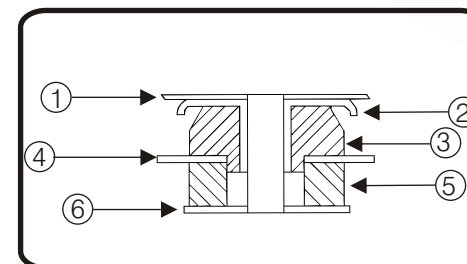


NOTES

1) Be sure on disassembly to note all quantity and positions of any shims that may have been inserted for body alignment. These shims will have to be re-used to insure proper body alignment.

2) The factory bracket used at position #5 to hold the lower cushion in place must not be re-used. Supplied nuts are for rear bumper bolts.

3) Install mounts one side at a time with the bolts on the opposite side loosened only



POSITION # 1 - 2 - 3

1. BODY
2. FACTORY SLEEVE
3. 4067
4. FRAME
5. 4068
6. FACTORY WASHER

POSITION # 4

1. BODY
2. SUPPLIED 2 1/2" WASHER AND 1 5/8" SLEEVE
3. 4092
4. FRAME
5. 4037
6. SUPPLIED 2 1/2" WASHER

POSITION # 5

1. BODY
2. SUPPLIED 3" WASHER & 1.900" SLEEVE
3. 4010
4. FRAME
5. 4037
6. SUPPLIED 2 1/2" WASHER

MUST RE-USE ORIGINAL HARDWARE (WHEN SPECIFIED)

TORQUE TO FACTORY SPECS