

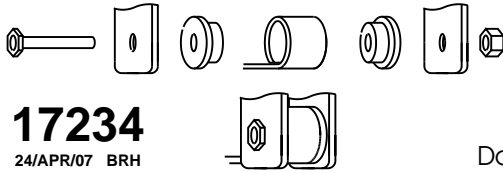
Universal Installation Instructions for bushings without inner metal sleeves.



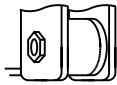
1131 VIA CALLEJON, SAN CLEMENTE, CA 92673

It is recommended that if you are unfamiliar with this type of work that you refer to a qualified service center specializing in this type of work. It is also recommended that if you choose to do this work yourself that a factory service manual be obtained for the proper procedures pertaining to removal, replacement and proper torque specifications for your vehicle. This instruction set is intended as a guideline for the safe installation of Energy Suspension's polyurethane bushings, once you have removed the factory components from your vehicle.

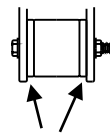
Grease all sides of the bushings that contact metal, including the end of the bushing. Tighten the nut and bolt until the bushings start to bulge. Do not overtighten! After the vehicle has been driven a short distance recheck the bushings. Caution: It is very important with this type of installation that you use NEW nylock nuts or Jam nuts.



17234
24/APR/07 BRH



Do not overtighten bushings.



Flange



The maximum preload for each flange side should be no more than 1/32".

© 2007 Energy Suspension. All rights reserved.
May not be reproduced, in any form, or by any means, without the written consent of Energy Suspension.

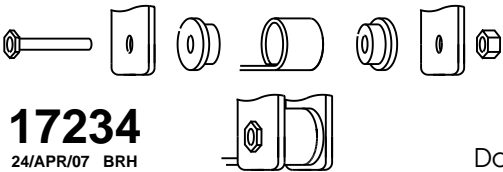
Universal Installation Instructions for bushings without inner metal sleeves.



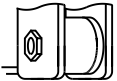
1131 VIA CALLEJON, SAN CLEMENTE, CA 92673

It is recommended that if you are unfamiliar with this type of work that you refer to a qualified service center specializing in this type of work. It is also recommended that if you choose to do this work yourself that a factory service manual be obtained for the proper procedures pertaining to removal, replacement and proper torque specifications for your vehicle. This instruction set is intended as a guideline for the safe installation of Energy Suspension's polyurethane bushings, once you have removed the factory components from your vehicle.

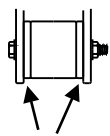
Grease all sides of the bushings that contact metal, including the end of the bushing. Tighten the nut and bolt until the bushings start to bulge. Do not overtighten! After the vehicle has been driven a short distance recheck the bushings. Caution: It is very important with this type of installation that you use NEW nylock nuts or Jam nuts.



17234
24/APR/07 BRH



Do not overtighten bushings.



Flange



The maximum preload for each flange side should be no more than 1/32".

© 2007 Energy Suspension. All rights reserved.
May not be reproduced, in any form, or by any means, without the written consent of Energy Suspension.

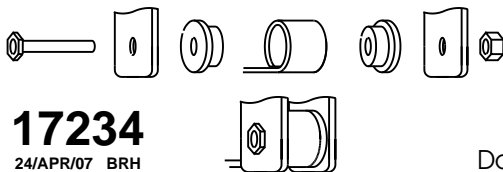
Universal Installation Instructions for bushings without inner metal sleeves.



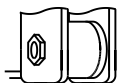
1131 VIA CALLEJON, SAN CLEMENTE, CA 92673

It is recommended that if you are unfamiliar with this type of work that you refer to a qualified service center specializing in this type of work. It is also recommended that if you choose to do this work yourself that a factory service manual be obtained for the proper procedures pertaining to removal, replacement and proper torque specifications for your vehicle. This instruction set is intended as a guideline for the safe installation of Energy Suspension's polyurethane bushings, once you have removed the factory components from your vehicle.

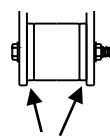
Grease all sides of the bushings that contact metal, including the end of the bushing. Tighten the nut and bolt until the bushings start to bulge. Do not overtighten! After the vehicle has been driven a short distance recheck the bushings. Caution: It is very important with this type of installation that you use NEW nylock nuts or Jam nuts.



17234
24/APR/07 BRH



Do not overtighten bushings.



Flange



The maximum preload for each flange side should be no more than 1/32".

© 2007 Energy Suspension. All rights reserved.
May not be reproduced, in any form, or by any means, without the written consent of Energy Suspension.