

Installation Instructions

Acura Front Sway Bar Set

ENERGY
SUSPENSION®

1131 VIA CALLEJON, SAN CLEMENTE, CA 92673

It is recommended that if you are unfamiliar with this type of work that you refer to a qualified service center specializing in this type of work. It is also recommended that if you choose to do this work yourself that a factory service manual be obtained for the proper procedures pertaining to removal, replacement and proper torque specifications for your vehicle. This instruction set is intended as a guideline for the safe installation of Energy Suspension's polyurethane bushings, once you have removed the factory components from your vehicle.

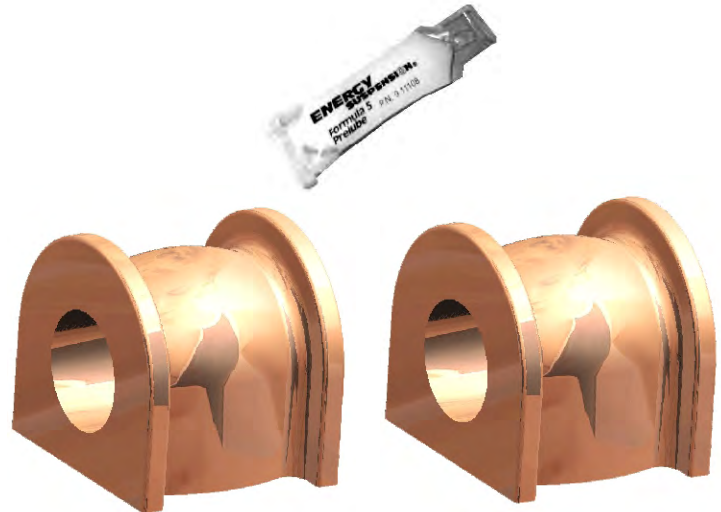
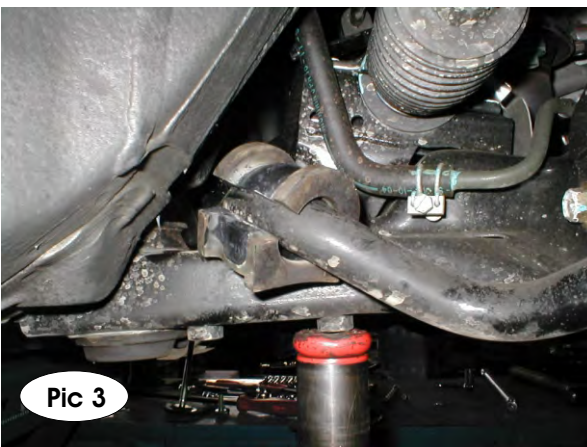
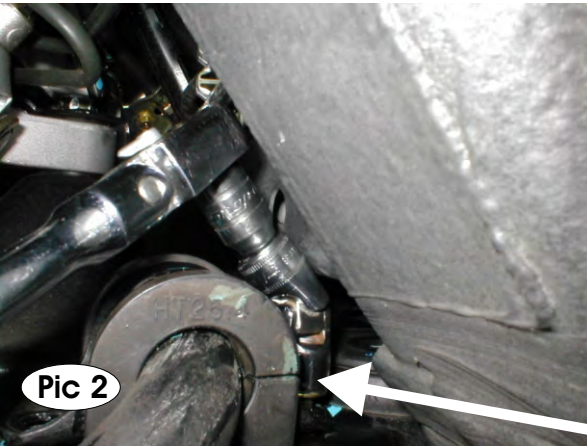
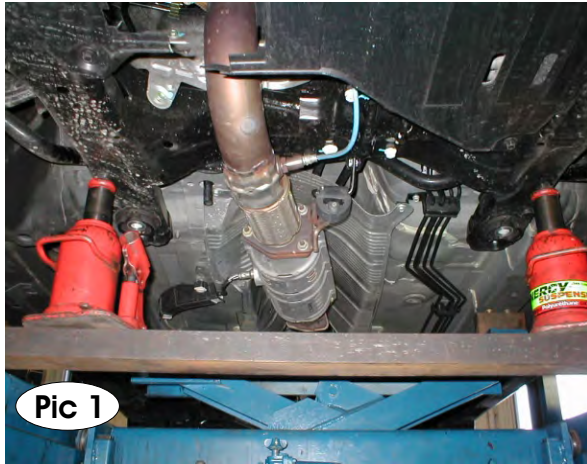
Support the car on jack stands, you will need to remove the wheels to gain access to the sway bar clamp bolts. With the car supported on the frame, now support the subframe with hydraulic jacks. **See Pic 1** Remove the subframe bolts from the rear and mid positions. Leave the subframe bolts in the front of the frame. Lower the jacks thus swinging the subframe down just enough to gain access to the rear sway bar clamp bolt. **See Pic2.** Remove the bolts and the clamp, remove the OEM rubber bushing. **See Pic 3**

With the supplied grease, lube the I.D. of the new Energy Suspension sway bar bushing. Install it making sure to put the slice towards the rear of the car. Re-using the factory bolts and clamp, tighten bolts to factory specifications. Jack the subframe back up and tighten the four subframe bolts that were removed to factory specifications.

MUST REUSE OEM BRACKET AND BOLTS.

BOM

- 1 - Grease Tube
- 2 - 5779 Sway Bar Bushings 25.4mm
- 1 - 17448 Instruction sheet



Notice direction of slice pointing towards the rear of the car.

© 2005 Energy Suspension. All rights reserved.
May not be reproduced, in any form, or by any means,
without the written consent of Energy Suspension.