

Installation Instructions

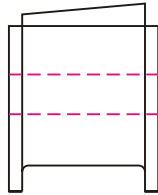
© 2002 Energy Suspension. All rights reserved.
May not be reproduced, in any form, or by any means,
without the written consent of Energy Suspension.



1131 VIA CALLEJON, SAN CLEMENTE, CA 92673

1. Remove the stock swaybar, bushing and bracket.
2. Grease the swaybar and the I.D. of the bushing.
3. Place the bushing around the swaybar making sure the taller side of the bushings are facing each other. See diagram.
4. Reinstall the factory brackets onto the bushing and reinstall onto the car. Torque fasteners to factory specs.

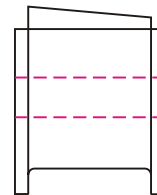
Short side towards
the wheels



Tall side must face
each other

17154

3/26/97 KN
Updated 14/FEB/02 BRH



Short side towards
the wheels

Installation Instructions

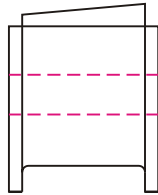
© 2002 Energy Suspension. All rights reserved.
May not be reproduced, in any form, or by any means,
without the written consent of Energy Suspension.



1131 VIA CALLEJON, SAN CLEMENTE, CA 92673

1. Remove the stock swaybar, bushing and bracket.
2. Grease the swaybar and the I.D. of the bushing.
3. Place the bushing around the swaybar making sure the taller side of the bushings are facing each other. See diagram.
4. Reinstall the factory brackets onto the bushing and reinstall onto the car. Torque fasteners to factory specs.

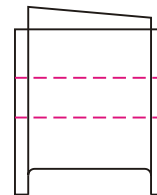
Short side towards
the wheels



Tall side must face
each other

17154

3/26/97 KN
Updated 14/FEB/02 BRH



Short side towards
the wheels

Installation Instructions

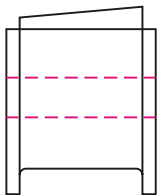
© 2002 Energy Suspension. All rights reserved.
May not be reproduced, in any form, or by any means,
without the written consent of Energy Suspension.



1131 VIA CALLEJON, SAN CLEMENTE, CA 92673

1. Remove the stock swaybar, bushing and bracket.
2. Grease the swaybar and the I.D. of the bushing.
3. Place the bushing around the swaybar making sure the taller side of the bushings are facing each other. See diagram.
4. Reinstall the factory brackets onto the bushing and reinstall onto the car. Torque fasteners to factory specs.

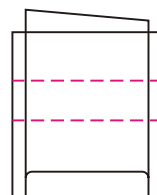
Short side towards
the wheels



Tall side must face
each other

17154

3/26/97 KN
Updated 14/FEB/02 BRH



Short side towards
the wheels