

Installation instructions

Set # 15.1106

Audi A3 2006 - UP

VW - GTI MKV 06 - UP

Jetta V 05 - UP

Passat B6 06 - UP

Rabbit MKV 06 - UP

ENERGY
SUSPENSION 

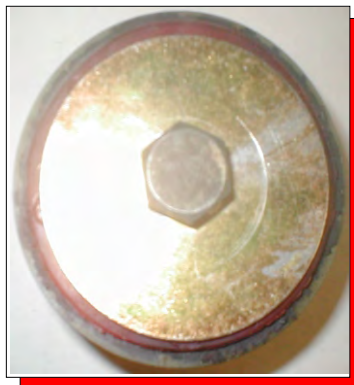
1131 VIA CALLEJON, SAN CLEMENTE, CA 92673

© 2008 Energy Suspension. All rights reserved.
May not be reproduced, in any form, or by any means,
without the written consent of Energy Suspension.

Note: It is recommended that this set be professionally installed if you are unfamiliar with this type of work, and a factory service manual be purchased prior to performing any work on your vehicle for proper disassembly, reassembly and torque specs. These instructions are intended for bushing removal and install of Energy Suspension polyurethane bushings, once you have removed the factory component from your vehicle.

After the engine torque arm position has been located, remove the center bolt and clean the areas of the mount where the new insert will be. A small rat tail file, thin knife or razor blade works well to remove the rubber flash.

Install the insert and small washer (picture below). Place the larger washer on the center bolt and tighten it into place using factory torque specifications.



17518

02/JAN/08 BPL