

Scan this code to register your GENUINE DEI product.



## INSTALLATION INSTRUCTIONS

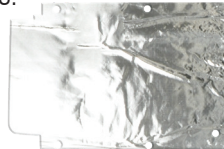
### Honda Pioneer 700 & 700-4

PART #902110

3 Pieces  
Heat barrier

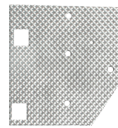
2 - 6m x 1 screws

#### NOTES:

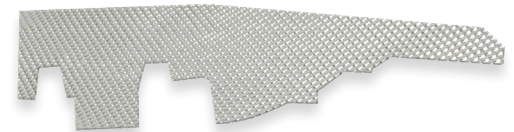


Center heat shield  
Under driver seat

Single sided shield for upright portion  
behind drivers seat



Bottom of floor pan  
driver side rear floor



\*Pieces not to scale with each other

#### SURFACE PREP:

Vacuum or wipe down installation area to remove all loose debris/dust. Then clean with isopropyl alcohol to remove any contaminants.

#### TOOLS:

Use manufacturer's suggested tools for panel removal. Cleaner/Degreaser, Cloth, Scissors, Side Cutters



Figure 1



Figure 2

1. Remove front seat. (Fig 1.)

2. Remove larger of the two plastic panels under the seat, located on the driver side. Remove the plastic push pins and bolts. (Fig 2.)



Figure 3

3. Install the center heat shield with the smooth side facing up. Slide the shield under the passenger side plastic shield and align with the existing holes. Use supplied 6M x 1 shoulder screws to secure the shield into place. (Fig 3)

4. Push to form the center heat shield into place.  
(Fig 4)

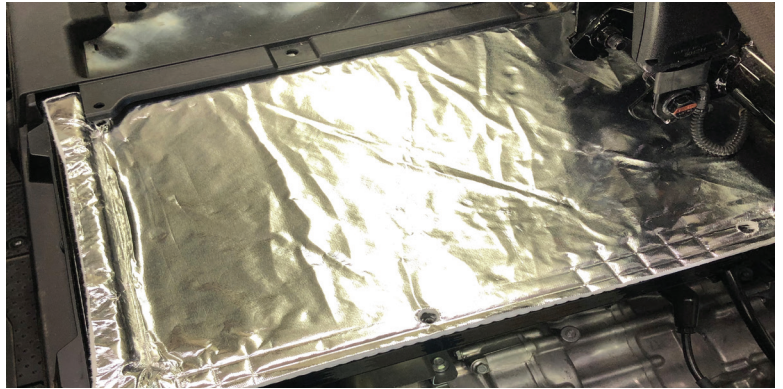


Figure 4

5. Remove the driver side rear floor panel behind the driver side seat. Remove the push pin and screws. (Fig 5)  
\*700-4 models only



Figure 5

6. Install the single sided shield to the upright portion of the panel behind the driver seat. (Fig 6)

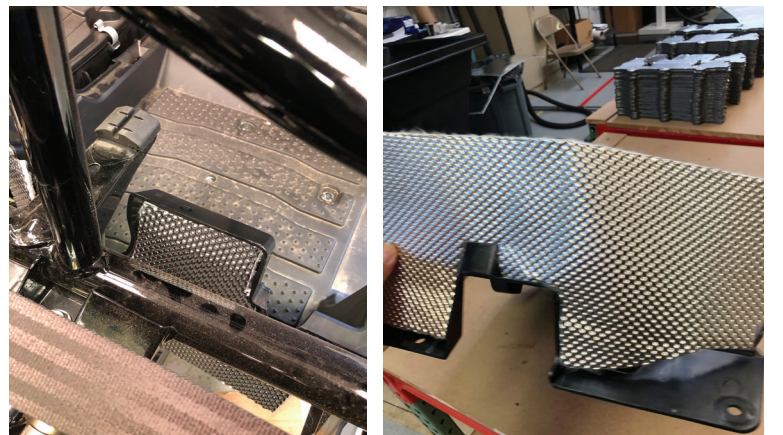


Figure 6

7. The last shield installs on the bottom of the floor panel from step 5.  
\*700-4 models only

8. Install the floor panel in reverse order

9. Reinstall the under seat panel and seat.

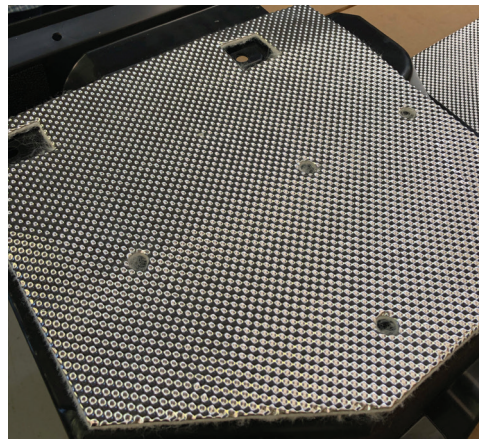


Figure 7