

## INSTALLATION INSTRUCTIONS

Thank you for purchasing genuine Design Engineering, Inc. products. Be sure to always wear the proper safety equipment when installing any DEI product. Design Engineering Inc. WILL NOT BE HELD LIABLE FOR IMPROPER INSTALLATION OR USE OF THIS PRODUCT. Please follow all instructions provided. If you are unsure of any installation procedure, please contact a certified technician.

**DESCRIPTION:** Heat Shield Liner Kits

**KIT CONTENTS:**

- Custom cut aluminum reflective pieces
- Custom cut insulation pieces
- Instructions

**TOOLS NEEDED:**

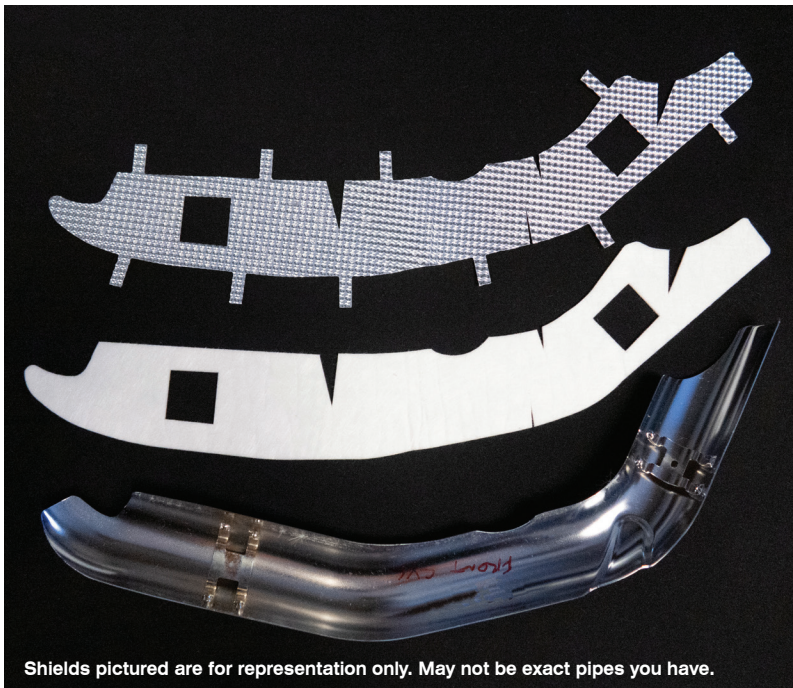
- Pick
- Tools to remove and install factory heat shields

**SAFETY:**

- Safety glasses
- Gloves

**NOTE OF CAUTION:** Wear eye and hand protection when installing all materials.

**OVERVIEW:** This kit controls heat on existing heat shields



Shields pictured are for representation only. May not be exact pipes you have.

**STEP 1.** Allow the motorcycle to cool before performing any work. Then remove the heat shields from the exhaust. They are held in place by worm style hose clamps.

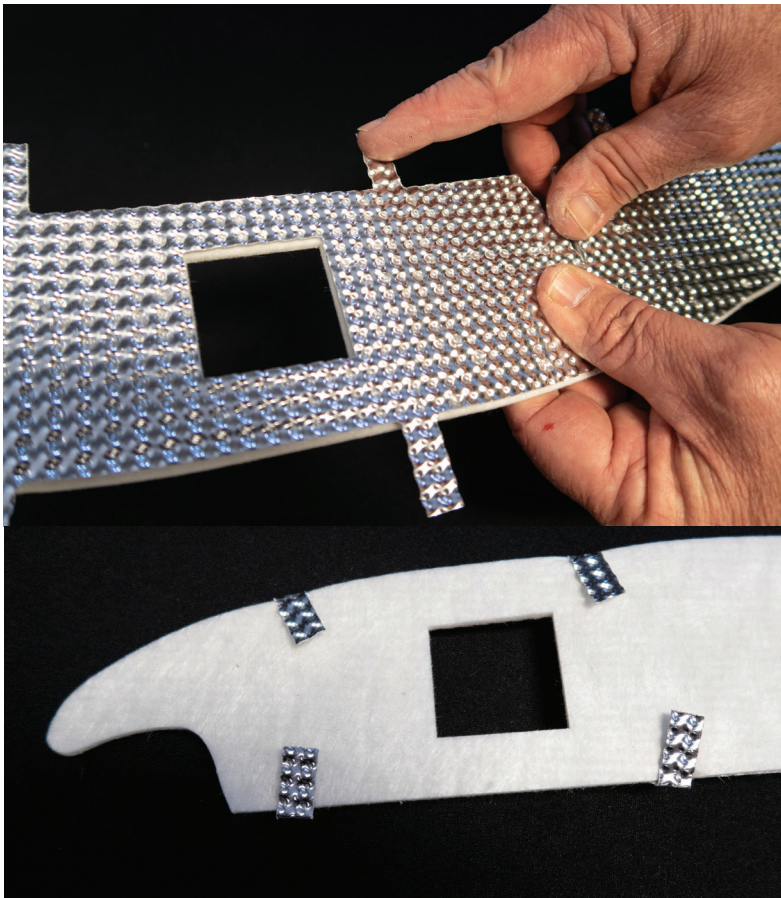
**STEP 2.** Remove the hose clamps from the shields.

**NOTE:** Take note of what direction the clamps were installed. If needed refer to a shop manual for this process. We suggest writing notes on this instruction sheet on which way the clamps are positioned, this will help with reinstalling the clamps later in the correct direction.

**STEP 3.** Remove the DEI Heat Shield Liner kit from the packaging and carefully unfold the pieces and flatten them back out by hand.

**STEP 4.** Layout the aluminum and insulation material matching them up to the shields that they will be installed in. FIG 1

**FIG. 1**  
MATCH UP ALUMINUM PIECES AND INSULATION PIECES WITH THE CORRESPONDING METAL HEAT SHIELD



**FIG. 2 & 3**  
**PLACE ALUMINUM PIECES ON TOP OF INSULATION PIECES AND FOLD OVER TABS TO SECURE THE TWO TOGETHER**

**STEP 5.** Place each piece of aluminum on the corresponding piece of insulation and bend the tabs under the insulation, this will help hold the pieces in place while they are installed in the heat shields. **NOTE:** Tabs are only used to hold insulation in place while installing liners. FIG 2 & 3

**STEP 6.** Insert the Heat Shield Liners into the heat shields with the insulation sandwiched between the pipe shield and the aluminum. FIG 4 & 5

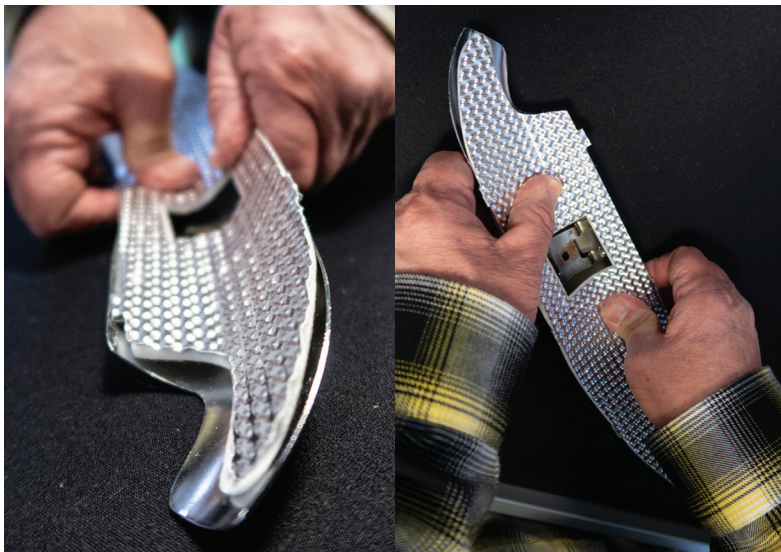
**STEP 7.** Working from one end install the hose clamps back into the heat shield in the correct direction. FIG 4 & 5

**NOTE:** It is helpful to use a pick when re-installing clamps to grab the end that is being inserted into the welded on stand off. FIG 6

**STEP 8.** At this point the shields are ready to be installed back on the motorcycle.

**NOTE:** Wipe off any fingerprints on the heat shields before starting the motorcycle to prevent discoloration.

**NOTE:** The bike is ready to ride. We suggest checking the hose clamps after 50 miles with the bike cool.



**FIG. 4 & 5**  
**PRESS PIECES INTO METAL SHIELDS BY STARTING AT ONE END AND WORKING YOUR WAY DOWN THE HEAT SHIELD**



**FIG. 6**  
**A PICK WILL HELP REINSTALLING THE CLAMP BY GRABBING IT AFTER IT IS PUSHED THROUGH THE WELDED ON BRACKET AND PULLING IT UP OVER THE LINER.**