



INSTALLATION INSTRUCTIONS

Boom Mat Damping Material

KIT CONTENTS: Boom Mat 2mm thick

- #50200 – (2) 12" x 12-1/2" (2.1 sq. ft.) Sheets of Damping Material
- #50202 – (4) 12" x 12-1/2" (4.2 sq. ft.) Sheets of Damping Material
- #50204 – (8) 12" x 12-1/2" (8.3 sq. ft.) Sheets of Damping Material
- #50206 – (6) 12-1/2" x 24" (12.5 sq. ft.) Sheets of Damping Material
- #50210 – (10) 12-1/2" x 24" (20.8 sq. ft.) Sheets of Damping Material
- #50212 – (20) 12-1/2" x 24" (41.7 sq. ft.) Sheets of Damping Material
- #50214 – (30) 12-1/2" x 24" (62.5 sq. ft.) Sheets of Damping Material

KIT CONTENTS: Boom Mat XL 4mm thick

- #50221 – (2) 12-1/2" x 24" (4.2 sq. ft.) Sheets of Damping Material
- #50222 – (5) 12-1/2" x 24" (10.4 sq. ft.) Sheets of Damping Material
- #50223 – (10) 12-1/2" x 24" (20.8 sq. ft.) Sheets of Damping Material
- #50223 – (15) 12-1/2" x 24" (31.2 sq. ft.) Sheets of Damping Material

TOOLS:

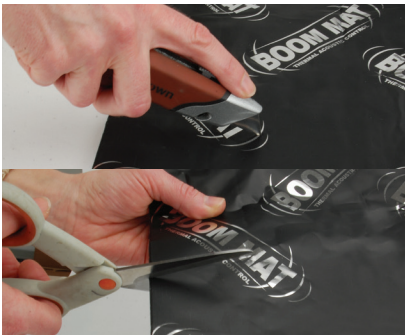
- Boom Mat blade lock knife (050216), Boom Mat installation roller (050218)
- Cardboard/Poster board to use as a template

NOTES:

It is not required to clean the area that the Boom Mat is being installed. However, the cleaner the area the stronger the bond will be. When applying damping material, the aluminum skin edge can be sharp. Use roller or heavy duty gloves when applying.

SURFACE PREP:

Vacuum installation area to remove all loose debris. Then clean with isopropyl alcohol, soapy water, or a wax/grease remover. Allow sufficient time to dry before installation of Boom Mat products.

**INSTRUCTIONS:**

1. Trim the Boom Mat Material to desired shape and size with your Boom Mat blade lock knife or scissors. A template is helpful when trying to achieve a professional look.



2. Remove the release liner to expose the adhesive.



3. Carefully apply to clean and dry area.



4. Once in the proper location, use your Boom Mat installation roller (050218) and apply pressure to ensure a strong bond between Boom Mat and the installation surface.