

INSTALLATION INSTRUCTIONS

Polaris RZR 800 Cargo Bed Heat Shield

Thank you for purchasing genuine Design Engineering, Inc. products. Be sure to always wear the proper safety equipment when installing any DEI product. Design Engineering Inc. WILL NOT BE HELD LIABLE FOR IMPROPER INSTALLATION OR USE OF THIS PRODUCT. Please follow all instructions provided. If you are unsure of any installation procedure, please contact a certified technician.

DESCRIPTION: UTV Heat Shield Kit Large (Rear Cargo Area)

PART NUMBER: 902485 / 10879

APPLICATION(s): Polaris RZR -RZR-S 2008-2014

KIT CONTENTS: Extreme Heat barrier QTY 1
Fender washer HDW103 M6x1x20 QTY 4
Hex screw HDW118 M6 QTY 4
Locknuts HDW104 QTY 4
Cool Tape 15ft roll

TOOLS NEEDED:

1/2" drill bit & drill

SAFETY:

Safety glasses
Gloves

NOTE OF CAUTION: Wear eye and hand protection when installing all materials.

OVERVIEW: The engine and exhaust on the Polaris RZR 800 can generate a lot of heat. This heat can transfer to the cargo area heating everything in the bed. The DEI Extreme Heat Barrier adds a durable layer of insulation between engine and rear cargo area.

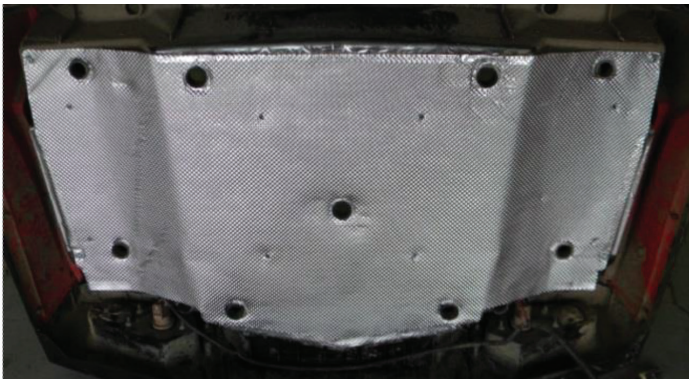


Fig 1



Fig 2

1. Remove the stock Torx screws and plastic rivets holding the cargo area.
2. Be sure to unplug tail light harness prior to bed removal.
3. Remove cargo bed.
4. Align the heat shield to the underside of the cargo bed with the aluminum side facing down. Fig. 1
5. Using a 1/4" drill bit, drill 4 holes into the bed along the four corners.
6. Insert the supplied M6x20 hex screws and tighten down using the supplied fender washers and nylock nuts. Fig. 2
7. Using the supplied 1" seam tape, seam edges if desired.
8. The holes for the stock Torx bed retainer screws have been pre-cut, but you may have to slot the hole slightly because of production tolerances. Fig. 3
9. Reinstall the rear bed.

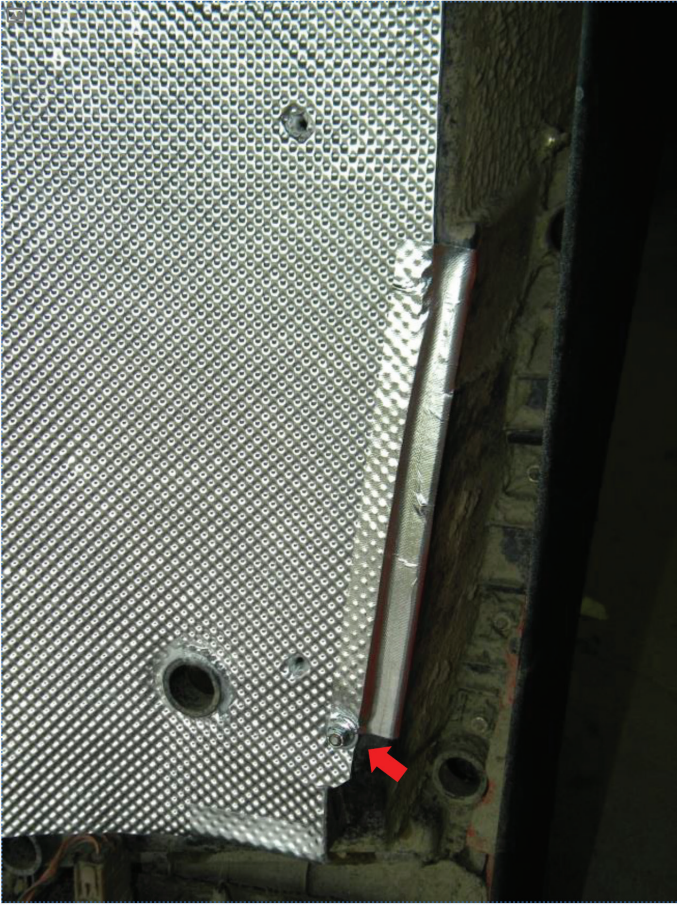


Fig 3