

Congratulations on your purchase of the AWE Tuning Intercooler System for your Porsche. Hundreds of hours of design and operational testing were spent to ensure maximum results without compromise. You have truly selected the best performing intercooler system for the 996TT.

Parts list:

- 2 Intercooler core
- 1 Driver side upper silicone hose
- 1 Driver side lower silicone hose
- 1 Passenger side upper silicone hose
- 1 Passenger side lower silicone hose
- 2 Aluminum hose coupler
- 2 Large threaded mounting pin
- 2 Small threaded mounting pin
- 8 M6 x 1 bolt
- 8 M6 fender washer
- 4 2.88" t-bolt clamp
- 2 2.25" t-bolt clamp
- 2 60-80mm hose clamp

Required tools and materials:

- Selection of screwdrivers
- Selection of sockets and a ratchet
- Dremel/Whizzer with cut off wheel or Body saw
- Red and blue thread locking compound

While the install is fairly straight forward, please review these instructions carefully before attempting installation. If you do not feel comfortable installing this system on your own, contact a professional installer in your area.

Please note:

Model year 2000 (Europe only) and 2001 vehicles with the last 5 VIN digits equal to or less than 86016 require different factory mounting brackets to work with our intercoolers. The proper intercooler bracket Porsche Part Numbers are:

- 996 504 253 02
- 996 504 254 02

Step 1:

Remove the rear bumper and both stock intercooler/mounting bracket/duct assemblies. Remove the intercooler cores from their brackets and then remove the air ducts from the cores.

Step 2:

Apply red locking compound to the threads of the included mounting pins and thread the mounting pins into the appropriately labeled threaded holes on the AWE Tuning lower end tanks.

One large pin per intercooler installs at arrows A in Figure 1 (996D for driver side intercooler and 996P for passenger side intercooler) and one small pin per intercooler installs at arrows B in Figure 1 (996D for driver side intercooler and 996P for passenger side intercooler).

When installed correctly, you should have one small pin and one large pin installed per intercooler core and they should be diagonal from each other.

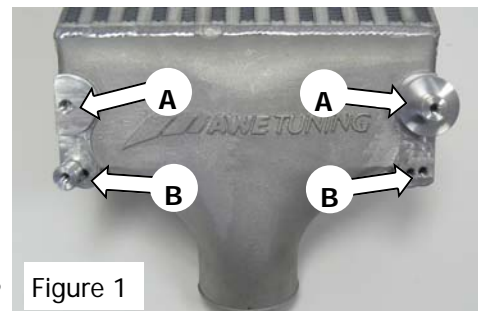
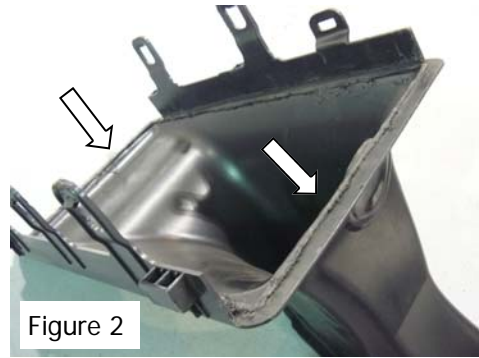


Figure 1

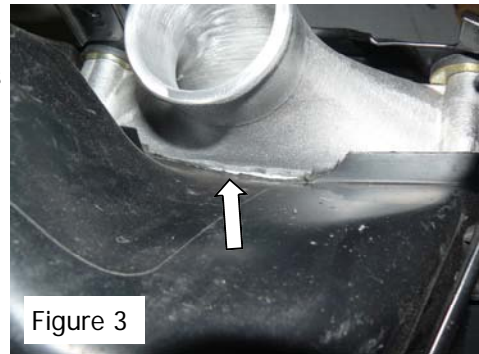
Step 3:

Using a Dremel or other cutting tool, trim the lips on the inside face of the stock air ducts so they will sit flush with the new intercooler cores. See arrows in Figure 2.



Step 4:

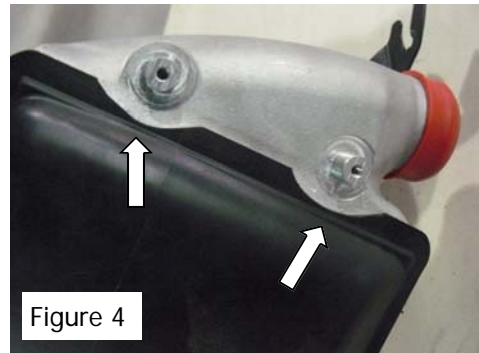
Trim the edge of the ducts where they meet the lower end tanks as shown at arrow in Figure 3.



Step 5:

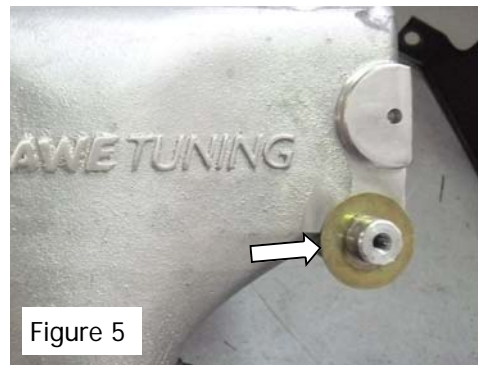
Trim the lower air ducts around the upper end tank mounting points to allow clearance for the mounting bracket as shown in Figure 4.

Re-attach all ducting to the cores.



Step 6:

Reuse the factory brass colored washers by placing one over each of the previously install small pins. At arrow in Figure 5.

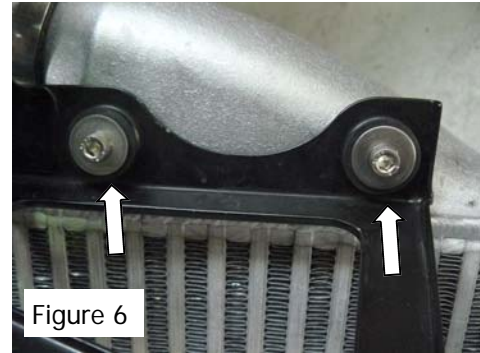


Step 7:

Install the AWE Tuning intercooler cores with ducts into the factory mounting brackets. The orientation is the same as stock.

Use the supplied bolts and washers to secure the cores to the bracket as shown in Figure 6 using blue thread locker. Ensure that the factory rubber spacers have not fallen out of the brackets holes.

Tighten the bolts to 50 **inch**-lbs. Take care not to overtighten and crush the factory rubber spacers (at arrows in Figure 6).



Step 8:

Insert the included aluminum hose adapters into the factory Y-pipe inlets. **Reuse the factory adapter's O-rings and C-clips.** Install the upper hoses onto the aluminum adapters with the included 60-80mm hose clamps. Leave the clamps loose at this time to allow for adjustments.



Step 9:

Apply blue thread locker to the fasteners that attach the intercooler brackets to the car and then install the intercooler/duct/bracket assemblies on the car, lining up the upper hoses with the intercooler end tank outlets.

Attach the upper hoses to the intercoolers with the included 2.88" t-bolt clamps. Leave the t-bolt clamps loose for now.

Step 10:

Adjust the intercooler brackets so that the upper hoses are centered in the inner fender pass-throughs. Tighten the fasteners that secure the intercooler brackets to the car.

Step 11:

Attach the lower intercooler hoses to the AWE Tuning intercoolers using included 2.88" t-bolt clamps and then to the turbos using included 2.25" t-bolt clamps. Tighten these clamps fully at this time.

Step 12:

Adjust the upper hoses to sit square to the Y-shaped intake pipe by rotating them. Once you have both intercoolers installed correctly, tighten the clamps that attach the upper hoses to the Y-shaped intake pipe. Tighten the t-bolt clamps that attach the upper hoses to the AWE Tuning intercoolers.

Step 13:

Recheck all hose clamps for tightness, and then reinstall the bumper to complete your AWE Tuning intercooler install.

Contact us with any questions or comments:

1-888-565-2257

215-658-1670

sales@awe-tuning.com



AWE Tuning
2385C Maryland Road
Willow Grove, PA 19090
215-658-1670
sales@awe-tuning.com

Thank you for choosing A.W.E. Tuning as your performance automotive parts supplier. Please remember that a performance car is only as strong as its weakest link. Therefore, it is vital that you maintain your vehicle to factory specifications.

By installing or using the purchased product, the Consumer accepts this warranty and any specific Manufacturer warranties enclosed.

Limited Warranty

The following warranty is valid only in the United States.

The Manufacturer's full warranty applies to all products sold.

Secor Ltd. (AWE Tuning) warrants to the original retail purchaser (Consumer) the AWE Tuning 996TT/GT2 Intercooler System for 1 year after the purchase date for Manufacturer's defect.

Upon verification of warranty coverage, A.W.E. Tuning will repair or replace the defective product at their discretion, without charge. This is the only remedy the Consumer has for any loss or damage, however arising, due to nonconformity in or defect of the product. This warranty does not cover consequential damage, loss of time or revenues, inconvenience, loss of use of vehicle, damage to the vehicle or components, or other incidental or indirect damage.

All warranties are void if the product was not installed by a certified auto mechanic, improperly serviced, modified, or used in a way not intended by the Manufacturer. Use of product in Motorsports or Racing conditions is grounds for warranty denial. Motorsports and Racing is an inherently abusive operational condition, and it is impossible to warranty for this type of usage.

The Consumer is responsible for ensuring that the product is installed in a safe and proper manner, and should cease usage of the product immediately if an unsafe or improper condition is noted. If an unsafe or improper condition is noted, the Consumer should then immediately contact the facility where the product was installed or A.W.E. Tuning directly.

Please contact the original place of purchase for any warranty claims or explanations of this document.