



## **IMPORTANT WARRANTY & INSTALLATION INSTRUCTIONS ATTACHED**

*Please Forward All Attached Information to Consumer. Warranty  
Not Valid Unless Returned to dB Performance Exhaust*

We ask that you take a few moments to  
Complete our warranty registration form.

To Activate Your 10 Year LIMITED WARRANTY, Go To:  
[dBexhaust.com/warranty](http://dBexhaust.com/warranty)



MADE IN THE USA



For Full-Color Installation Instructions, Please Visit:  
[dBexhaust.com](http://dBexhaust.com) & Search Part #

Please be sure to review the enclosed instructions prior to beginning the installation process. If you have any questions about the enclosed parts, instructions or encounter a problem during installation, **CALL dB Performance Exhaust TECHNICAL ASSISTANCE AT 800.486.0999**



Exhaust System Installation  
 Cat-Back Exhaust System  
 2007-2010 Chevy/GMC Silverado/Sierra 2500HD 6.0L  
 Single Side Exit w/ 4.0" Slash Cut Polished Tip  
 24890, 24892, 24894, 24896, 24898

Please take time to read and understand these installation instructions.

dB Performance Exhaust recommends that installation of this system be performed by a qualified service center or professional muffler installer who has the necessary equipment, tools and experienced personnel. However, if you decide to perform this install, the use of a hoist and an additional person will be required.

**CAUTION:** Never work on a hot exhaust system. Allow time for the vehicle to cool. Always wear eye protection when working under a vehicle.

Please confirm that all parts are present before beginning the factory exhaust system removal and dB Performance Exhaust system installation.

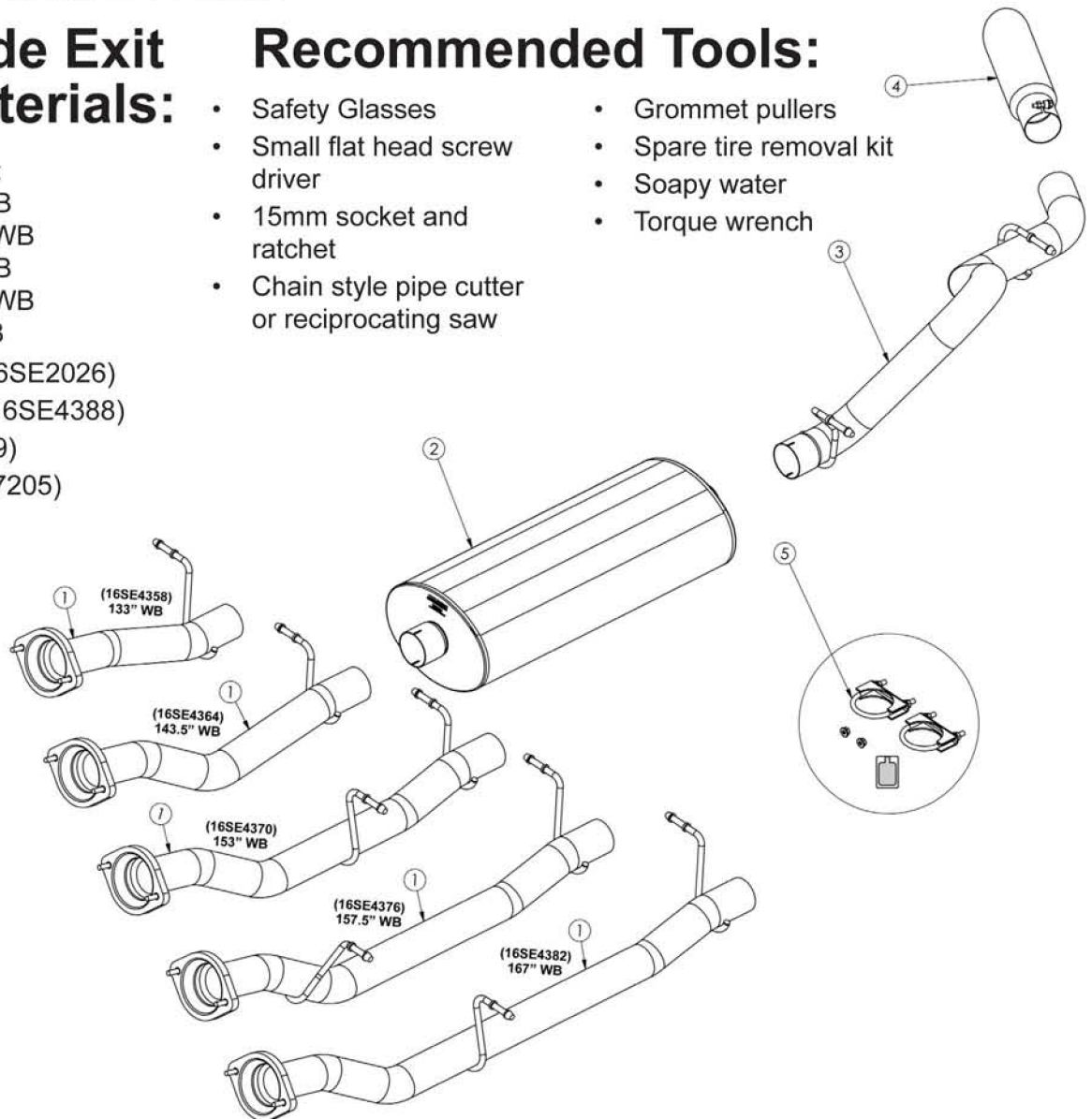
## Single Side Exit Bill of Materials:

## Recommended Tools:

- 1 Headpipe Assembly:  
 16SE4358 - 133" WB  
 16SE4364 - 143.5" WB  
 16SE4370 - 153" WB  
 16SE4376 - 157.5" WB  
 16SE4382- 167" WB
- 2 Muffler Assembly (16SE2026)
- 3 Tailpipe Assembly (16SE4388)
- 4 Tip Assembly (14019)
- 5 Hardware Kit (16TA7205)

- Safety Glasses
- Small flat head screw driver
- 15mm socket and ratchet
- Chain style pipe cutter or reciprocating saw

- Grommet pullers
- Spare tire removal kit
- Soapy water
- Torque wrench



## Removal of Stock System:

1) Remove the rearmost hanger from the grommet using grommet pullers or similar device. (See Fig. A)

2) Use a 15mm socket and ratchet to remove the flange nuts at the flange connection of the headpipe. Then remove the hangers at the headpipe location and the hanger after the muffler. Remove the tunnel muffler section away from the vehicle. This completes the removal of the stock system. (See Fig's B, C, D & E)



Fig. A



Fig. B



Fig. C



Fig. D



Fig. E

## Installation of dB Exhaust System:

**NOTE:** The supplied double edge clamps in this system will crush and permanently deform the exhaust piping as they are tightened. **DO NOT** tighten these clamps any more than is necessary to lightly hold the exhaust components in place, until the very end of this installation process. It will be difficult or impossible to make any positional or rotational adjustments to the exhaust system after these clamps have been tightened down.

**VERY IMPORTANT:** Align all clamps so that the open edge of the clamp bracket is parallel and aligned with the notch in the pipe, and the outside edge of the clamp bracket is approximately 1/8" from the end of the pipe expansion. (See Fig. 1) Failure to properly position or orient the clamps could result in a weak clamping load, or even a potential leak at the clamp joints.

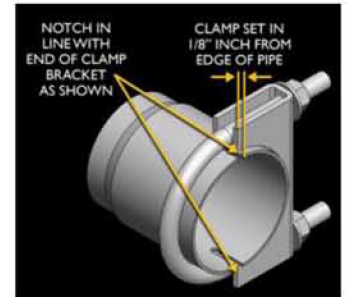


Fig. 1

1) Locate the dB Head Pipe assembly and slide the flange studs into the factory flange. Use the nuts supplied with the dB hardware kit and evenly tighten down to 35 Ft-lbs. Insert the hanger in to the factory grommets. (See Fig's F, G & H)

**Note:** Using a soapy solution on the grommet hole will make the job easier.



Fig. F



Fig. G



Fig. H

2) Slide a supplied 3" clamp over the inlet of the dB muffler. Make sure the drain hole is facing down. Slide the muffler onto the Head Pipe and pre-tighten the clamp. (See Fig's I, J, K & L)



Fig. I



Fig. J



Fig. K



Fig. L

3A) Locate Tail Pipe and slide a supplied 3" clamp over inlet end. Then route the inlet end over the axle housing, slide over Muffler outlet (See Fig M) and snug fit clamp. The Tail Pipe hanger can now be inserted into rubber insulator (See Fig N).

4A) Insert Tail Pipe rear hanger into rubber insulator (See Fig O).

5A) Locate 4.0" slash cut tip assembly. Next slide assembly over Tail Pipe (See Fig. P) and snug fit clamp.

**IMPORTANT! SEE RECOMMENDED MINIMUM CLEARANCES ON PAGE 7. FAILURE TO FOLLOW THESE INSTRUCTIONS COULD IMPACT LONG TERM PERFORMANCE OF PARTS!**

6A) Check for clearance from the front of the installed exhaust system to the Tail Pipe. Once clearance adjustments are made, start tightening each 3" clamp beginning with the Intermediate Pipe clamp.

7A) Check alignment of tip and be sure to allow clearance between the top of the Tip Assembly and the body panel (See Fig. Q). Make necessary adjustments, including fore and aft, and begin tightening each clamp. See Fig. 1.

Torque Setting: **35 ft.-lbs.**

Tip clamp torque setting: **16-20 ft.-lbs.**

9A) It is **STRONGLY SUGGESTED** that all clamps be checked and tightened if necessary after road testing the vehicle and only after system has cooled.



Fig. M



Fig. N



Fig. O



Fig. P



Fig. Q

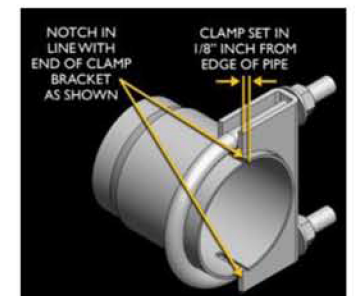


Fig. 1

3B) Locate Dual Y Assembly and slide a supplied clamp over the inlet (**See Fig. R**). Then slide the inlet (expanded) end over Muffler outlet making sure it is positioned as shown in **Fig. S**. Snug fit clamp for now. The Tail Pipe hanger can now be inserted into the rubber insulator (**See Fig. T**).



**Fig. R**

4B) Locate Rear Tail Pipe hangers ["U"-shaped Wire Loop & Plate] and hardware [threaded Mounting Plate, bolts and lock washers] (**See Fig. U**). Starting on either side of the vehicle, position one of the threaded rectangular-shaped mounting plates on top of the frame rail over the hole at the rear of the frame (**See Fig. V & W**).



**Fig. S**

5B) Insert the supplied 5/16"-18 bolt through one of the Tail Pipe Wire Loop & Plate hangers and thread it into the threaded Mounting Plate on top of the frame.

**NOTE: At this time the factory PASSENGER SIDE Tail Pipe rubber insulator can be removed and discarded (See Fig. X).**

6B) Position the DRIVERS SIDE Wire Loop Hanger so the opening of the "U" shaped hanger faces in towards the spare tire and slightly toward the rear of the vehicle (**See Fig. Y**). Snug fit for now as the position will change once Tail Pipe is positioned.



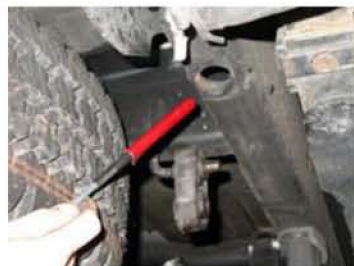
**Fig. T**

7B) Mount the PASSENGER SIDE Wire Loop Hanger so the opening of the "U" shaped hanger faces out and towards the passenger side door (**See Fig. Z**). Snug fit for now as the position will change once Tail Pipe is positioned.

8B) Locate PASSENGER SIDE Tail Pipe (**See Fig. AA**) and slide a supplied 2.5" clamp over the inlet (expanded end), route over the axle housing and slide over the **BOTTOM OUTLET** of the Dual Y Assembly (**See Fig. BB**). Snug fit for now as the position will change once Tail Pipe is positioned.



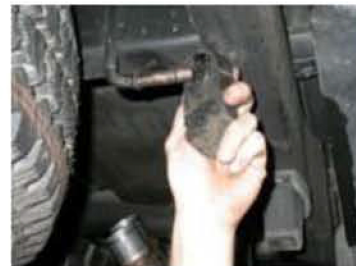
**Fig. U**



**Fig. V**



**Fig. W**



**Fig. X**



**Fig. Y**



**Fig. Z**



**Fig. AA**



**Fig. BB**

9B) Position the supplied rubber insulator on Wire Loop Hanger and insert PASSENGER SIDE Tail Pipe Hanger into the same rubber insulator (See Fig. CC).



Fig. CC

10B) Locate DRIVER SIDE Tail Pipe (See Fig. DD) and slide a supplied 2.5" clamp over inlet (expanded) end, route over the axle housing and slide over UPPER OUTLET of the Dual Y Assembly (See Fig. EE). Snug fit clamp at this time.



Fig. DD

11B) Position supplied rubber insulator on Wire Loop Hanger and insert DRIVER SIDE Tail Pipe Hanger into the same rubber insulator (See Fig. FF).

12B) Locate Exhaust Tips. Next slide an Exhaust Tip over each Tail Pipe (See Fig. GG) and snug fit clamps making sure each clamping bolt is positioned to the outside of each Tail Pipe (See Fig. HH).



Fig. EE

**IMPORTANT! SEE RECOMMENDED MINIMUM CLEARANCES ON PAGE 7. FAILURE TO FOLLOW THESE INSTRUCTIONS COULD IMPACT LONG TERM PERFORMANCE OF PARTS!**

13B) Starting at the Intermediate Pipe, check clearance of each installed pipe and muffler, in particular near brake lines and differential vent tube on Driver Side (See Fig. II). Use a supplied nylon tie to group lines together. DO NOT PULL NYLON TIE TIGHT — BE SURE TO LEAVE SUFFICIENT PLAY FOR LINE(S) TO MOVE FREELY. (See Fig. JJ).

14B) Now begin tightening each clamp (See Fig. KK). Torque Setting: **35 ft.-lbs.** Torque setting for tip clamps: **16-20 ft.-lbs.**

15B) It is STRONGLY SUGGESTED that all clamps be checked and tightened if necessary after road testing the vehicle and only after system has cooled.



Fig. FF

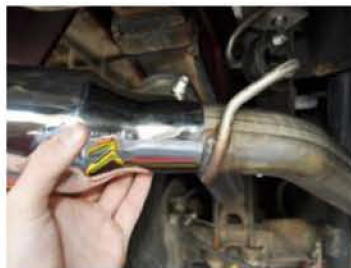


Fig. GG

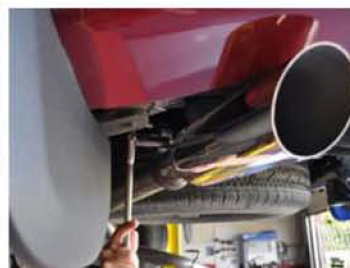


Fig. HH

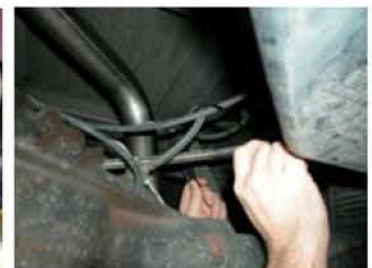


Fig. II

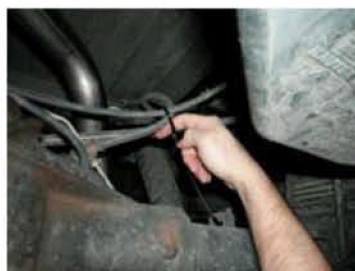


Fig. JJ

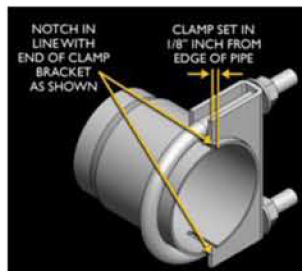


Fig. KK

**NOTE:** During cold weather start-ups, you may experience an exhaust sound that is deeper and louder in tone than usual. This is temporary and will diminish to normal levels once your engine has reached its normal operating temperature.

**NOTE:** Immediately following the installation of your dB Exhaust system, you may experience a trace of smoke after initial start-up. DO NOT be alarmed. The smoke is caused by the burning of a small amount of forming oil residue used in the manufacturing process.



Exhaust System Installation  
Cat-Back Exhaust System  
2007-2010 Chevy/GMC Silverado/Sierra 2500HD 6.0L  
Single Side Exit w/ 4.0" Slash Cut Polished Tip  
24890, 24892, 24894, 24896, 24898

## RECOMMENDED MINIMUM CLEARANCE TO COMPONENTS:

Distance from Pipe to Fuel Pump Control Module (Fig. LL):	1.6 in. / 40 mm.
Distance from Pipe to Spare Tire (Fig. MM):	2.4 in. / 60 mm.
Distance from Pipe to Shock Absorber Boot (Fig. NN):	2.4 in. / 60 mm.
Distance from Pipe to Brake Line Sleeve (Fig. OO):	2.4 in. / 60 mm.

**NOTE: Failure to follow these instructions and maintain the recommended clearances to the above listed parts could impact the long term performance of said parts. Please contact the dB Exhaust Customer Service Department (800-486-0999) if you have any questions related to the above information.**



Fig. LL



Fig. MM



Fig. NN



Fig. OO