



## *INSTALLATION GUIDE*

### ***2013+ Audi allroad Exhaust System***

Congratulations on your purchase of the AWE Tuning high performance exhaust for the 2013+ Audi allroad 2.0T.

Exquisite build quality with industry leading performance distinguishes this exhaust system from all others.

***Contact us with any installation questions.***

***215-658-1670***

***AWE-Tuning.com***

***performance@AWE-Tuning.com***

## PARTS LIST

### Exhaust System

- 1 inlet adapter (part EU)
- 1 mid muffler (part ET)
- 1 3.15" y-pipe section (part ER)
- 1 passenger side outlet tube, section B (part ED)
- 1 driver side rear Helmholtz resonator section (part EJ)
- 1 passenger side rear Helmholtz resonator section (part EK)
- 2 4.0" tip assembly (optional finish)
- 6 63.5mm Accu-Seal clamp
- 2 2.50" t-bolt clamp
- 2 hanger lock collar
- 1 allen key
- 1 tube exhaust paste sealant

### Optional Downpipe

- 1 downpipe section with flex joint (part BC)
- 1 cat to downpipe gasket
- 3 M8 x 30mm stainless bolt
- 3 M8 copper exhaust nut
- 6 M8 washer

## Step 1

Installation of the AWE Tuning exhaust system is essentially the reverse of removal.

The AWE Tuning exhaust slips over top of the downpipe outlet, using a supplied 63.5mm clamp to fasten. To ensure a leak free seal at each slip joint throughout the system, use the enclosed exhaust paste sealant.

Before removing the factory downpipe, first soak the fasteners in a penetrating oil for several hours to ensure easy removal.

Fasteners and a new gasket are included with the optional downpipe to replace the factory parts. Use a quality anti-seize compound on all fastener threads during re-assembly.

## Step 2

Install AWE Tuning exhaust parts as shown in **Figure 2** below. Refer to the Parts List on page 1. Note that there are several adjustment points on the AWE exhaust to ensure proper fitment. Also note that the factory exhaust hangers are also adjustable with slotted bolt holes to allow further fine tuning.

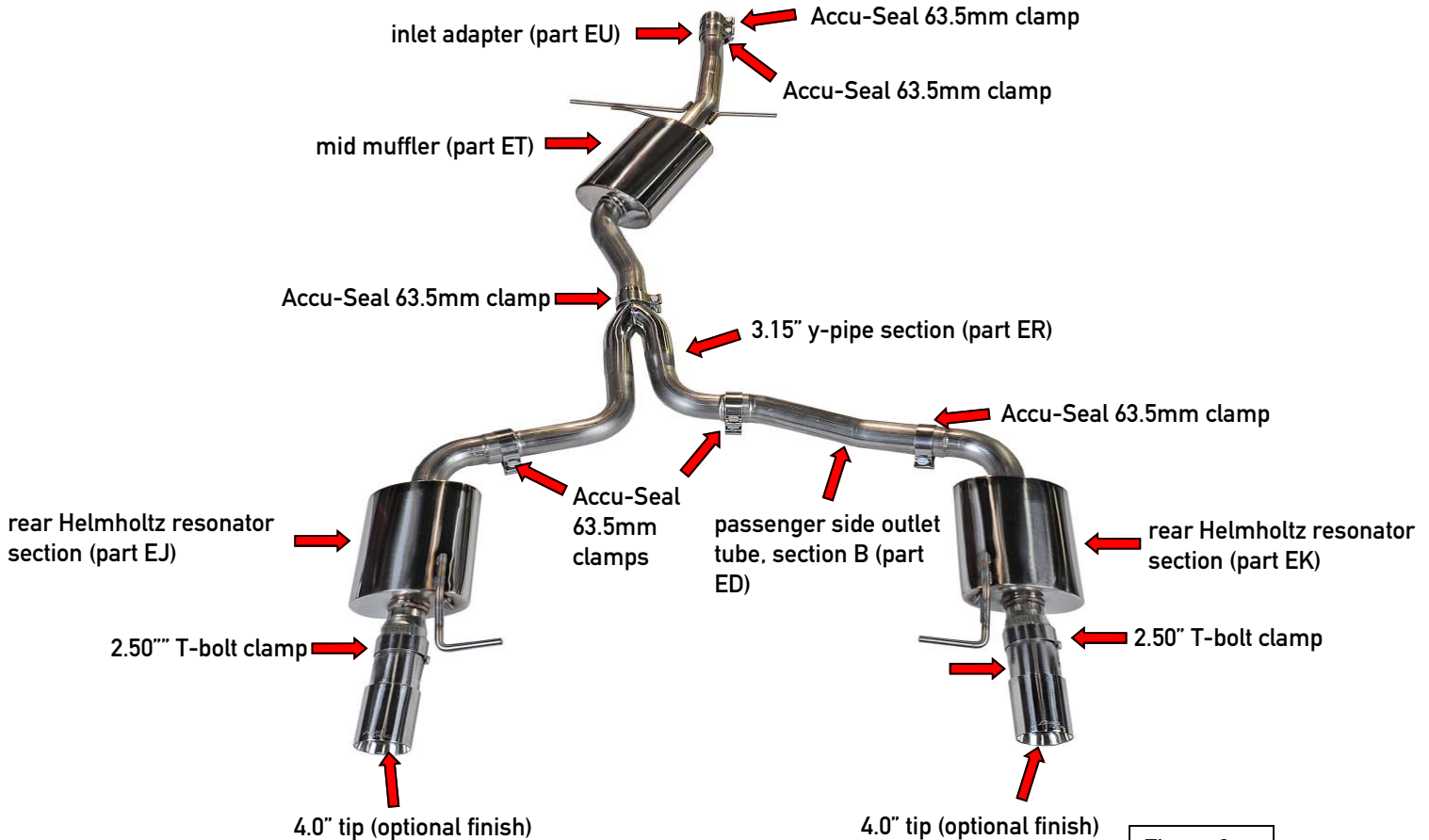


Figure 2

## Step 3

In order to center each tip in the bumper valance opening, the slip joint connections for the rear tubing and Helmholtz resonators must be set at minimal overlap.

Before assembling, apply included exhaust paste at each slip joint to eliminate leaks.

**Figure 3** shows the overlap between part ER and part EJ. Use an impact gun to tighten down this clamp after final adjustment. Tighten to 40ftlbs.



Figure 3

## Step 4

In order to center each tip in the bumper valance opening, the slip joint connections for the rear tubing and Helmholtz resonators must be set at minimal overlap.

**Figure 4** shows the overlap between part ER and part ED. Use an impact gun to tighten down this clamp after final adjustment. Tighten to 40ftlbs.

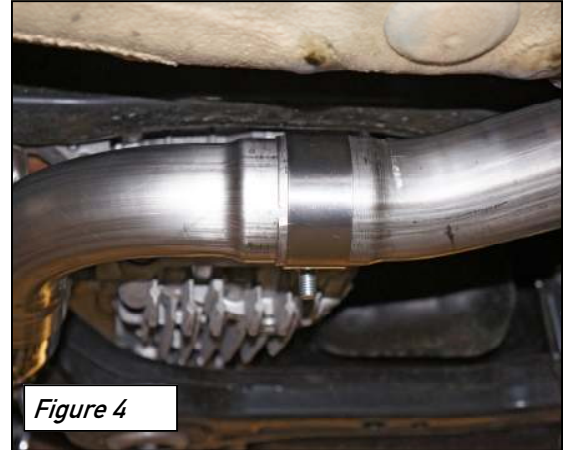


Figure 4

## Step 5

In order to center each tip in the bumper valance opening, the slip joint connections for the rear tubing and Helmholtz resonators must be set at minimal overlap.

**Figure 5** shows the overlap between part ED and part EK. Use an impact gun to tighten down this clamp after final adjustment. Tighten to 40ftlbs.

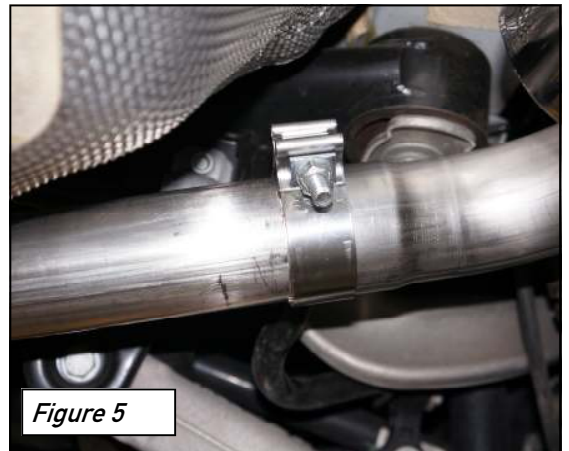


Figure 5

## Step 6

Each rear tip is rotationally adjustable to ensure that the AWE Tuning logo remains centered when the exhaust is installed, and also length adjustable to suit personal taste.

**When adjusting the length of the tips, make sure that the tip and tailpipe of the muffler overlap at least the width of the clamp (arrow in Figure 6).** *This overlap is very important to ensure that the clamp has enough surface area to tighten down to in order to keep the tip from falling off while driving!*

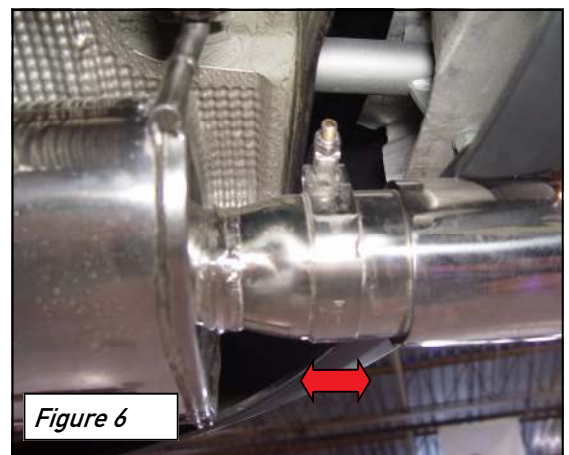


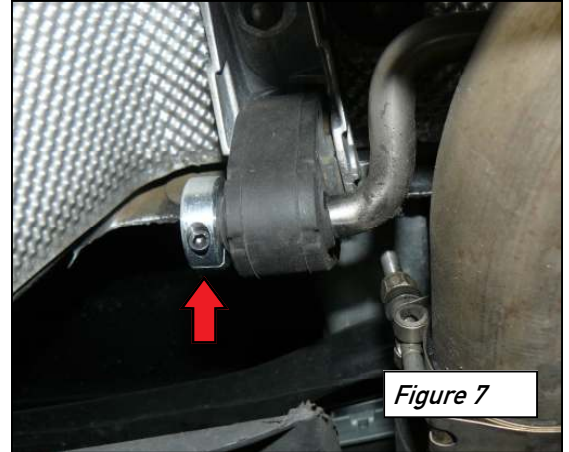
Figure 6

## Step 7

Once the exhaust system is properly adjusted, install a hanger post clamp on each of the rear muffler hanger posts, as shown at arrow in **Figure 7**. Slide the clamp onto the hanger post so that it sits snug against the rubber element, and then tighten down with the enclosed allen wrench.

These clamps will keep the exhaust from sliding laterally under usage and will keep the tips properly aligned in the valence openings.

Set final tip rotation, stagger, and overall length, and then tighten their T-bolt clamps.



## Tip Installation

To accomplish the best tip fitment, align the tip clamp to cover *only* the slot, as shown by Arrow A in Figure 8.

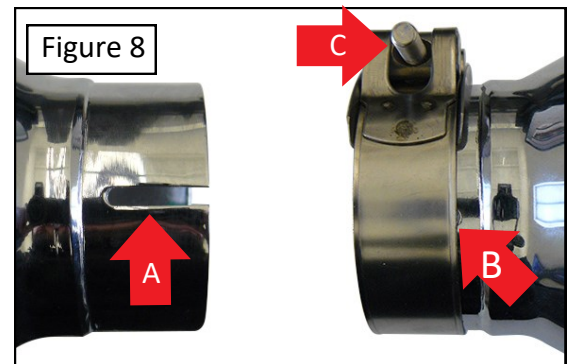
The clamp should only be covering the section of the tip that has been slotted, as shown by Arrow B in Figure 8.

Torque the tip clamp to a minimum of 18 ft./lbs.



### NOTES:

- It is required to apply anti-seize to the threads to prevent the clamps from breaking, shown by Arrow C in Figure 8.
- It is okay to have the clamp extend beyond the edge of the tip inlet.



## CARE & WARRANTY

Once installed properly, your AWE Performance Exhaust will provide years of trouble-free performance. The exhaust volume and sound will settle with usage; 800-1000 miles is required to break-in new exhaust systems.

Periodic cleaning of exhaust tips is necessary to maintain proper finish, especially in areas prone to road salt and caustic deicing solutions. Use a mild soap and water solution or car wax to clean the finish. Avoid using metal polishes, as they can scratch the finish.

Any questions or comments,  
please do not hesitate to contact us:

**AWE**  
199 Precision Drive  
Horsham, PA 19044  
215-658-1670  
[www.awe-tuning.com/support](http://www.awe-tuning.com/support)

Up-to-date warranty information is found [HERE](#).