



## INSTALLATION GUIDE

**2016+ BMW 340i**  
**Touring Edition Exhaust**

**2016+ BMW 340i**  
**Performance Mid Pipe**

**FOR RACING USE ONLY**

Congratulations on your purchase of the AWE Tuning Touring Edition Exhaust for the 2016+ BMW B58 engine 340i.

Exquisite build quality and superior performance distinguishes this exhaust from all others.

**Contact us with any installation questions.**

215-658-1670

[AWE-Tuning.com](http://AWE-Tuning.com)

[performance@AWE-Tuning.com](mailto:performance@AWE-Tuning.com)

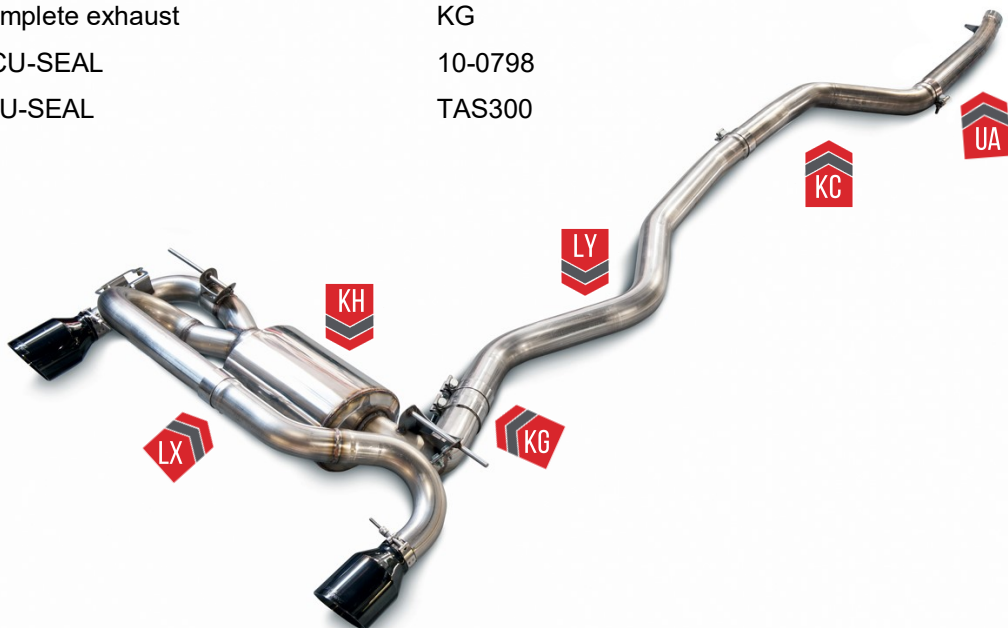
# PARTS LIST

## Touring Edition Exhaust

QTY	Description	Part Number
1	Coupler, axle-back	TZ
1	Rear muffler section	KH
1	Dual outlet section	LX
2	3.00in ACCU-SEAL, band clamp	TAS300
3	Hex head bolt M6x20x1	91287A137
3	Flat washer M6 screw size	93475A250
2	Split collar clamp	SRC1-037
1	7/64" allen key	7122A17
2	Hex head bolt M8x22x1.25	91287A303
2	Metric 18-8 stainless steel washer	93475A270
2	Large-diameter flat washer M8	91116A160
2	Spring lock washer M8 screw size	92148A200
2	Stainless steel hex nut, M8 x 1.25 mm	91828A410
2	90mm or 102mm or carbon exhaust tips	31122235(90mm chrome) 31122235-blk(90mm black) 31122242 (102mm chrome) 31122242-blk(102mm black) 61000122 (carbon)
1	85MM ACCU-SEAL	10-0798
4	1/4-20 x 3/4" carriage bolt	1010-1003-4 w/ 90mm and carbon tips
4	Flange cut locking nut 1/4"-20	90949A016 w/ 90mm and carbon tips
2	Barrel hardware clamp	BHM6X063SS00C w/102mm tips

## Performance Mid Pipe (compatible with only AWE Touring edition exhaust)

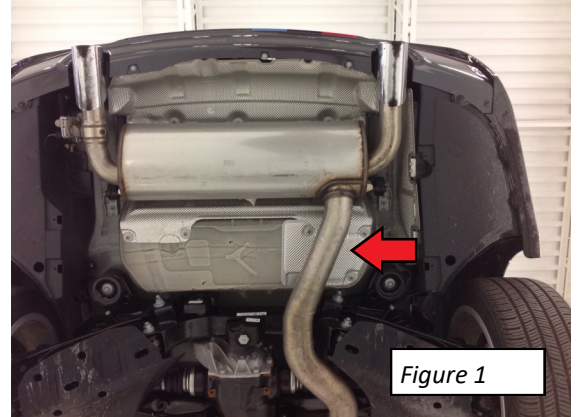
1	Front section	UA
1	Inlet section	KC
1	Non-res section	LY
1	Coupler, complete exhaust	KG
1	85MM ACCU-SEAL	10-0798
3	3.00in ACCU-SEAL	TAS300



## Step 1

If you are installing the AWE Tuning Touring Edition Exhaust *with Performance Mid Pipe*, there is no need to cut the factory exhaust, so skip to Step 3.

If you are installing just the Touring Edition Exhaust and re-using the factory mid pipe, the exhaust will have to be cut *just* before the rear muffler. **See Figure 1.**

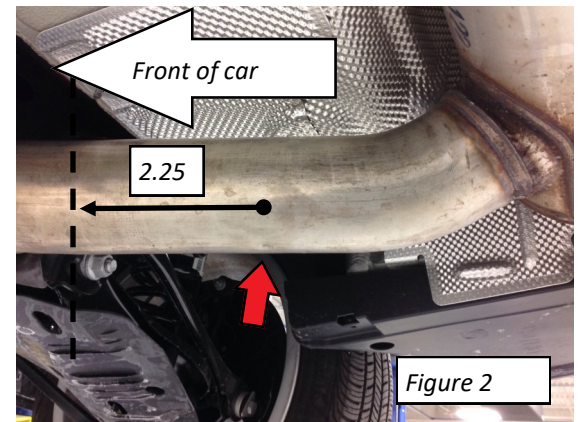


## Step 2

Locate the factory cut dimple at the rear of the exhaust. Measure from the dimple towards the **FRONT** of the car 2.25" and mark. Cut the exhaust as clean and straight as possible at the mark you created. **See Figure 2.**

Unclip the wire harness to the valve motor, then remove the nuts securing the exhaust hangers to the chassis. Remove the muffler from the vehicle.

Deburr the ends of the cut tubing and ensure outside of the tube is free of debris.

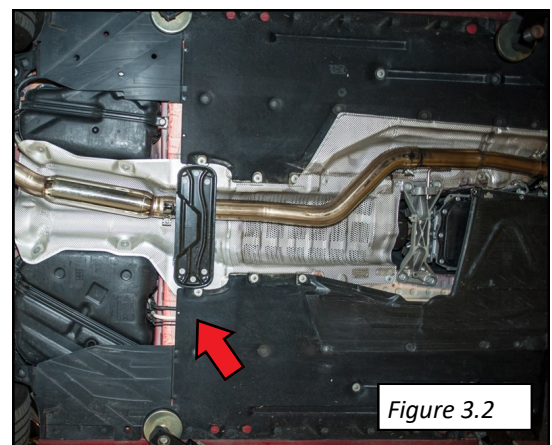
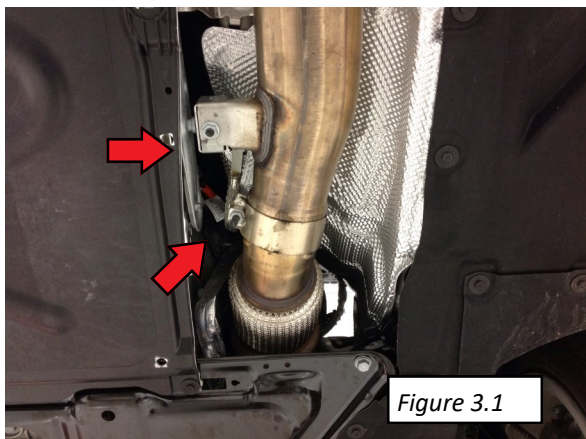


## Step 3

If you are *not* installing the AWE Tuning Performance Mid Pipe, skip to **Step 7.**

Spray penetrating oil on the factory cat section exhaust clamp nut/threads and the 13mm nut for the exhaust support bracket. Let soak, then loosen the clamp and remove the 13mm nut. **See Figure 3.1.**

Remove chassis brace at the center of the vehicle as seen in **Figure 3.2.**

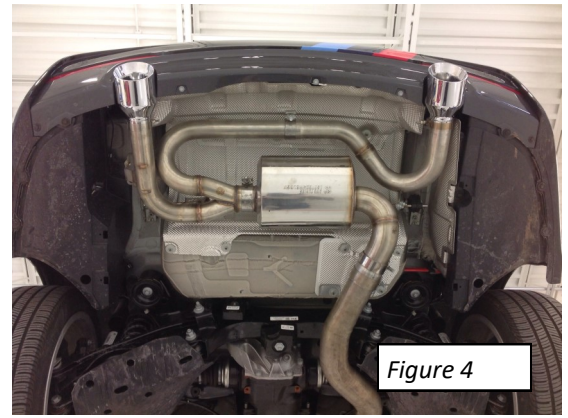


## Step 4

If the AWE Tuning Touring Edition Exhaust had been previously installed, loosen both of the clamps at the rear coupler and carefully slide the rear muffler assembly out of the clamp and away from the OEM exhaust. See **Figure 4**.

If factory rear muffler is still installed and you are removing the entire exhaust in one piece, support the rear muffler and unclip the wire harness to the valve motor. Remove the nuts securing the exhaust hangers to the chassis.

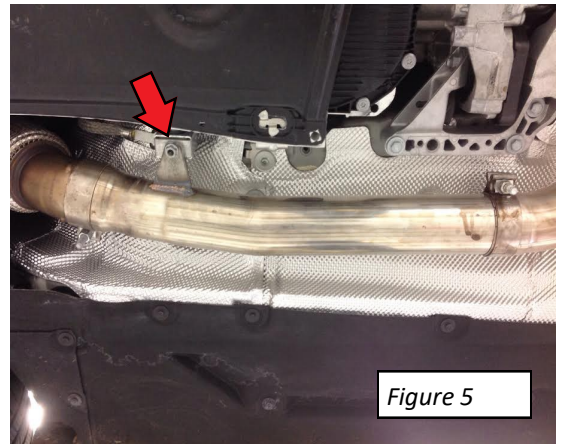
To remove the exhaust from the vehicle, drop it 8-10" downward from the chassis and pull rearward with a twisting motion to separate the junction at the cat section. Due to the weight of the system, it is recommended that two people perform this step.



## Step 5

Installation of the AWE Tuning Performance Mid Pipe is essentially the reverse of removal.

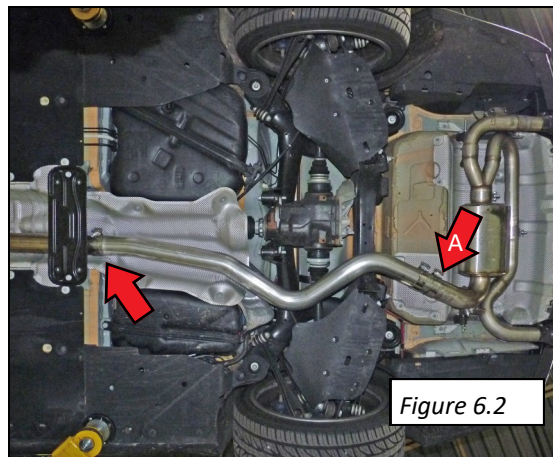
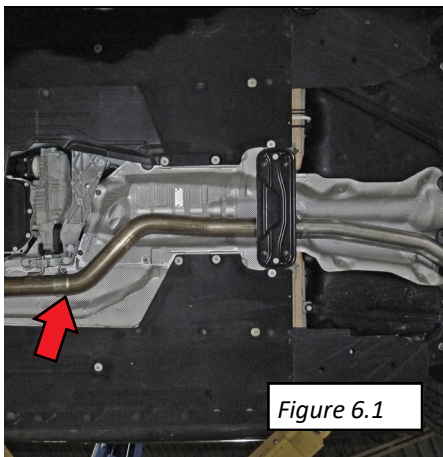
Use the supplied 80mm Accu-Seal clamp to join the front section to the factory cat section. Line up the hole in the AWE exhaust bracket to the stud protruding straight down on the front chassis mount. See **Figure 5**.



## Step 6

Install the balance of components using the supplied 3.0" Accu-Seal clamps at arrows in **Figures 6.1 and 6.2**.

Leave the clamps loose until the tips on the exhaust system are adjusted into position while simultaneously ensuring clearance at the mid brace.



Use the supplied coupler (KG) with (2) 3.0" Accu-Seal clamps, at **Arrow A** in **Figure 8**, to attach the AWE Tuning Performance Mid Pipe to the AWE Tuning Touring Edition Exhaust.

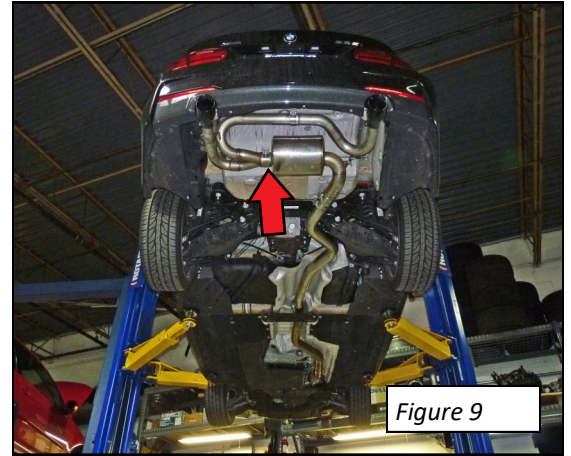
## Step 7

Use supplied coupler and two 3.0" Accu-Seal clamps to attach factory mid pipe to the muffler inlet. For proper clamping, make sure this coupler equally overlaps the mid pipe outlet and the muffler inlet.

**Note:** for touring rear section only, use the supplied (TZ) coupler with the 3.0" Accu-Seal and 80mm Accu-Seal clamp. The 80mm side of the clamp attaches to the factory cut tubing.

Pre-assemble tip outlet section, at arrow in **Figure 9**, onto the rear 180 Technology™ resonator assembly outlet using supplied 3.0" Accu-Seal clamp.

Slip on factory hanger brackets to the exhaust hanger bars.



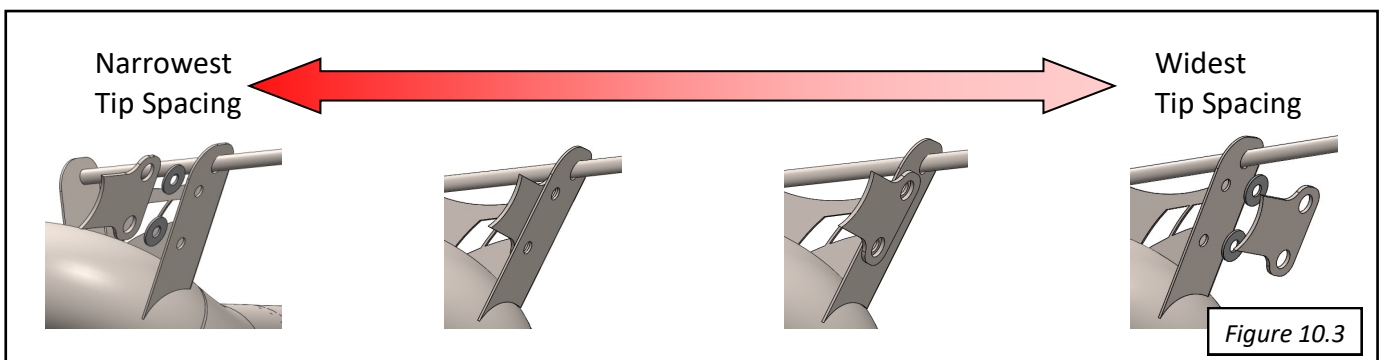
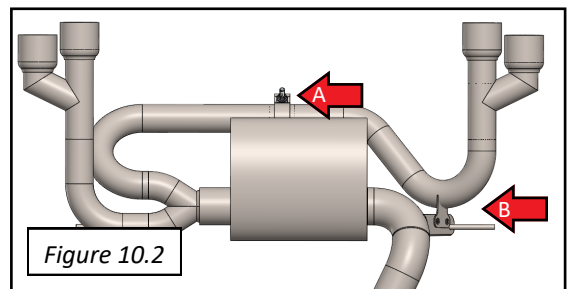
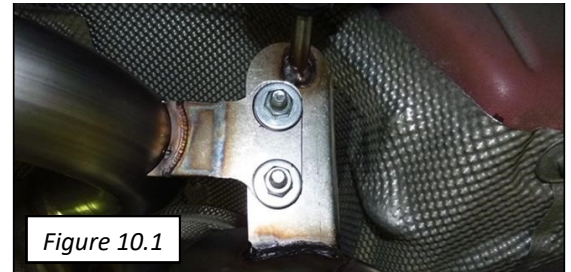
## Step 8

Use supplied M8 hardware to secure passenger outlet tab to rear muffler bracket as shown in **Figure 10**.

Specific tip placement can be adjusted by loosening the Accu-Seal clamp shown by **Arrow A** in **Figure 10.2** and changing the placement of the mounting tab (**Arrow B**).

Spacers can be added to increase or decrease the spacing if desired or for use with alternate valances (see **Figure 10.3**).

Align tips in valance, tighten all clamps, including the 13mm nut for the chassis support at the front of the exhaust if the AWE Tuning Performance Mid Pipe was installed.



## Step 9

Unbolt valve motor from the factory exhaust.

Use the supplied M6 bolts and washers to mount the valve motor onto the AWE Tuning Touring Edition Exhaust bracket.

Re-connect wire harness to valve motor.

## ENJOY

Once installed properly, your AWE Tuning™ Exhaust will provide a lifetime of trouble free performance.

Please note that the rear 180 Technology™ resonator has a small drain hole to allow condensation to escape. Water drops from this area are normal.

Also, please note that the exhaust volume and sound will settle with usage. 800-1000 miles is typically required to fully break in a new exhaust system.

Periodic cleaning of exhaust tips is necessary to maintain proper finish, especially in areas prone to road salt and caustic de-icing solutions. Use a mild soap and water solution or car wax to clean the finish. Avoid using metal polishes, as they can scratch the finish.



Any questions or comments,  
please do not hesitate to contact us:

215-658-1670

[AWE-Tuning.com](http://AWE-Tuning.com)

[performance@AWE-Tuning.com](mailto:performance@AWE-Tuning.com)



AWE Tuning  
199 Precision Drive  
Horsham, PA 19044  
215-658-1670  
performance@AWE-Tuning.com

Thank you for choosing AWE Tuning as your performance automotive parts supplier. Please remember that a performance car is only as strong as its weakest link. Therefore, it is vital that you maintain your vehicle to factory specifications.

**By installing or using the purchased product, the Consumer accepts this warranty and any specific Manufacturer warranties enclosed.**

## Limited Warranty

The following warranty is valid only in the United States.

The Manufacturer's full warranty applies to all products sold.

Secor Ltd. (AWE Tuning) warrants to the original retail purchaser (Consumer) these products:

2016+ BMW 340i Touring Edition Exhaust  
2016+ BMW 340i Touring Edition Exhaust with Performance Mid Pipe

from date of original purchase, against manufacturing defects for:

ONE YEAR on tip finish, LIFETIME on the balance of parts

Upon verification of warranty coverage, AWE Tuning will repair or replace the defective product at their discretion, without charge. This is the only remedy the Consumer has for any loss or damage, however arising, due to nonconformity in or defect of the product. This warranty does not cover consequential damage, loss of time or revenues, labor costs, shipping costs, inconvenience, loss of use of vehicle, damage to the vehicle or components, or other incidental or indirect damage.

All warranties are void if the product was not installed by a certified auto mechanic, improperly serviced, modified, or used in a way not intended by the Manufacturer. Use of product in Motorsports or Racing conditions is grounds for warranty denial. Motorsports and Racing is an inherently abusive operational condition, and it is impossible to warranty for this type of usage.

The Consumer is responsible for ensuring that the product is installed in a safe and proper manner, and should cease usage of the product immediately if an unsafe or improper condition is noted. If an unsafe or improper condition is noted, the Consumer should then immediately contact the facility where the product was installed or AWE Tuning directly.