



**IMPORTANT WARRANTY & INSTALLATION
INSTRUCTIONS ATTACHED**

*Please Forward All Attached Information to Consumer
Warranty Not Valid Unless Returned to CORSA Exhaust*

We ask that you take a few moments to complete our warranty registration form:

TO ACTIVATE YOUR LIMITED LIFETIME WARRANTY GO TO:
CORSAPERFORMANCE.COM/WARRANTY



**For Full-Color Installation Instructions, Please Visit:
CORSAPERFORMANCE.COM and Search by Part Number**

Please be sure to review the enclosed instructions prior to beginning the installation process. If you have any questions about the enclosed parts, instructions or encounter a problem during installation:
CALL CORSA PERFORMANCE TECHNICAL ASSISTANCE AT 800.486.0999

Please take time to read and understand these installation instructions.

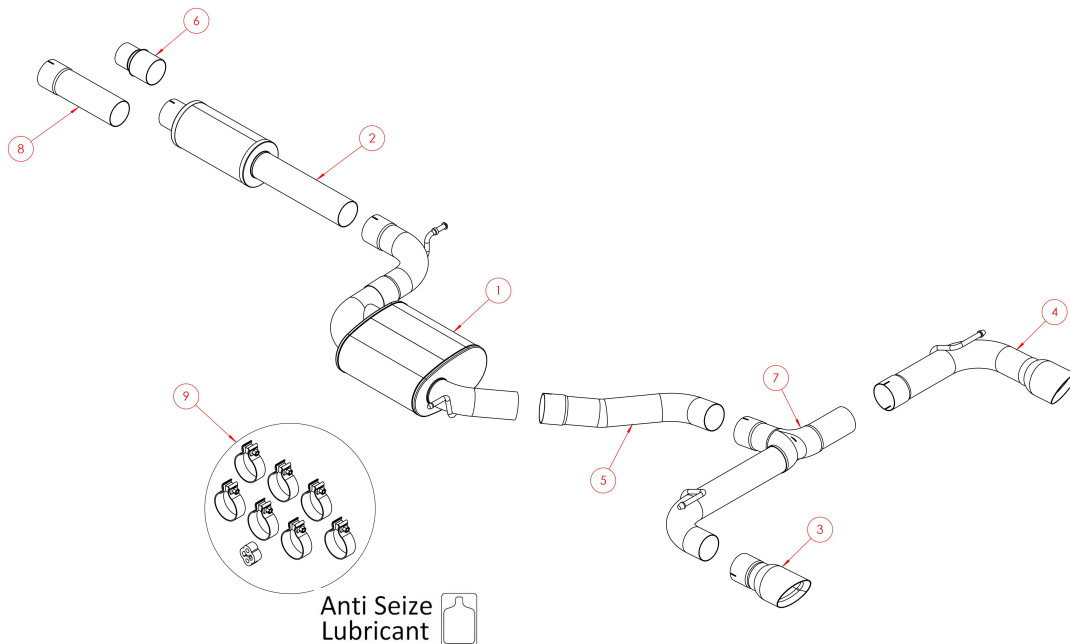
CORSA recommends that the installation of this system be performed by a qualified service center or professional muffler installer who has the necessary equipment, tools and experienced personnel. However, if you decide to perform this install, the use of a hoist and an additional person will be required.

CAUTION: Never work on a hot exhaust system. Allow time for the vehicle to cool. Always wear eye protection when working under a vehicle.

Recommended Tools:

- 3/8" drive ratchet
- 3/8" drive 13mm deep socket
- 3/8" drive 15mm deep socket
- Safety glasses
- Grommet pullers
- Soap and water solution
- Torque Wrench

Please confirm that all parts are present before beginning the factory exhaust system removal and CORSA exhaust system installation.



Bill of Materials

1. 34VW2063 – Rear Tunnel Muffler
2. 34VW2067 – Front Tunnel Muffler
3. 34VW3017 – Driver Tip Assembly
4. 34VW3020 – Passenger Tip Assembly
5. 34VW4188 – Axle Pipe
6. 34VW4205 – 3" Adapter
7. 34VW4208 – T Pipe Assembly
8. 34VW4216 – Turbo-Back Connector Pipe
9. 34VW7078 – Hardware Kit

Factory Exhaust System Removal:

1. Locate the factory sleeve clamp connecting the stock cat-back exhaust system to the stock downpipe. Using a 13mm socket and ratchet, loosen both nuts on the sleeve clamp. Place a support under the front of the system to ensure it does not fall during removal. **(Fig A)**
2. Remove the factory rear tunnel brace, located behind the front tunnel muffler, using a 13mm socket and ratchet. The factory rear tunnel brace will be re-installed during CORSA system installation. **(Fig B)**
3. Remove the front hanger grommet from the exhaust, located directly behind the front tunnel muffler, using grommet pullers or a similar device. **(Fig C)**

Note: The use of a soap and water solution may aid in the removal of hanger grommets.

4. Place a jack stand or similar support under the rear section of the exhaust. Unbolt the driver and passenger side rear muffler hanger assemblies using a 13mm socket and ratchet. **(Fig D)** Once the hanger assemblies are unbolted, the exhaust will no longer be connected to the vehicle. Slide the exhaust slightly reward, enough to create clearance at the sleeve clamp, and remove the stock exhaust as a single unit from the vehicle. **(Fig E)** Ensure that the sleeve clamp stays on the stock downpipe, as it will be used for the installation of the CORSA system.
5. Once the system is removed from the vehicle, remove the driver and passenger side hanger assemblies from the system, as they will be reused during the installation process of the CORSA system. Note the position of the hanger assemblies relative to the vehicle as they will be installed in the same position on the CORSA system. **(Fig F)** This completes the removal process.

Note: The use of a soap and water solution may aid in the removal of hanger grommets.

REMOVAL PICTURES ON NEXT PAGE 

Factory Exhaust Removal Pictures



Fig. A



Fig. B

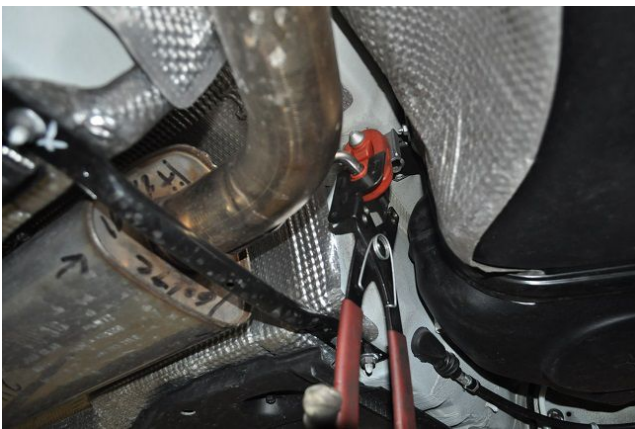


Fig. C

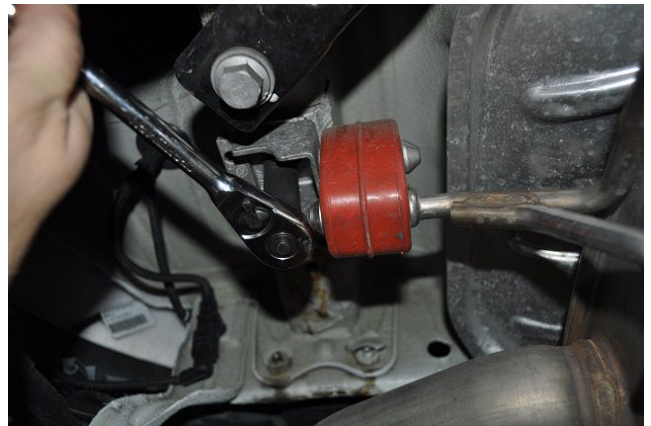


Fig. D



Fig. E

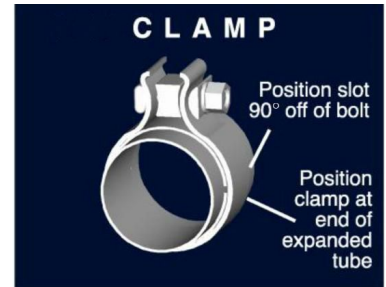


Fig. F

Installation of CORSA Exhaust System:

NOTE: Apply the anti-seize lubricant (supplied) to the threads **ONLY** of all the clamps and flange bolts. Failure to follow this procedure can cause nuts to seize on clamps and potentially destroy threads. After applying anti-seize lubricant, be sure to thoroughly clean your hands, as lubricant will tarnish stainless steel. All clamps should be tightened using a properly calibrated Torque Wrench. Using an air impact gun will damage the clamp and reduce its ability to effectively seal the joint. It may also cause the joint to separate, thereby causing damage to your exhaust system and to your vehicle.

NOTE: Align all clamps so that the center of the clamp bolt is 90 degrees from the notch in the pipe. (See Fig. CLAMP)



1. Remove all exhaust system components from the shipping box, including the clamps, hardware and 3" Cat-Back adapter, which allows this system to be connected to the factory downpipe.

NOTE: If connecting to the factory downpipe, follow Step 2, and then (*skip Step 3*) Step 4. If connecting to an aftermarket 3" downpipe, *skip* Step 2 and begin with Step 3.

2. Locate the 3" adapter and slide the smaller end into the factory sleeve clamp at the downpipe connection, with the 3" opening facing the rear of the vehicle. Snug both nuts on the sleeve clamp using a 13mm deep socket and ratchet, but do not fully tighten at this step. (**Fig G**)
3. Locate the turbo-back connector pipe, along with a 3" clamp. The previously used stock sleeve clamp will no longer be used. Slide the clamp over the expanded end of the adapter. Install the clamp so that the bolt is vertical with the nut towards the ground and the bolt is towards the inside of the car when the expanded end of the adapter is installed over the aftermarket downpipe outlet. Tighten the clamp using a 15mm deep socket and ratchet until the adapter is snug on the downpipe.

NOTE: Your CORSA cat-back will mount directly to any downpipe that ends with a 3" diameter pipe section and maintains the OEM connection position. **However, additional fabrication may be necessary if your aftermarket downpipe does not match the OEM outlet position.**

4. Locate a 3" Torca clamp, along with the front tunnel muffler. Slide the clamp over the expanded end of the front tunnel muffler. Install the clamp on the front tunnel muffler so that the bolt is vertical, with the nut towards the ground and the bolt is towards the inside of the car when the expanded end of the front tunnel muffler is installed over the 3" adapter. (**Fig H**) Rotate the front tunnel muffler until the case seam is facing towards the top of the vehicle. Tighten the clamp using a 15mm deep socket and ratchet until the front tunnel muffler is snug on the 3" adapter. (**Fig I**)

INSTALLATION INSTRUCTIONS CONTINUED ON NEXT PAGE 

5. Locate the provided hanger grommet from the hardware kit. Install the hanger grommet onto the hanger mount located just in front of the driver side rear suspension. **(Fig J)**

Note: The use of a soap and water solution may aid in the installation of the hanger grommets.

6. Locate a 3" Torca clamp, along with the rear tunnel muffler. Slide the clamp over the expanded end of the rear tunnel muffler. **(Fig K)** Insert the rear hanger into the hanger grommet previously installed in step 4. **(Fig L)** Slide the expanded end of the rear tunnel muffler over the front tunnel muffler outlet. **(Fig M)** Install the clamp on the rear tunnel muffler so that the bolt is vertical, with the nut towards the ground and the bolt is towards the inside of the car. Insert the front hanger into the stock hanger grommet located in front of the fuel tank. **(Fig N)** Tighten the clamp using a 15mm deep socket and ratchet, until the rear tunnel muffler is snug on the front tunnel muffler. **(Fig O)**

Note: The use of a soap and water solution may aid in the installation of the hanger grommets.

7. Locate a 3" Torca clamp, along with the axle pipe. Slide the clamp over the expanded end of the axle pipe. Install the clamp on the axle pipe so that the bolt is vertical, with the nut towards the ground and bolt is towards the inside of the car when the expanded end of the axle pipe is installed over the rear tunnel muffler. **(Fig P)** Position the axle pipe so that the axle pipe outlet is centered within the opening of the rear suspension cradle and that the center straight section on the axle pipe is parallel to the ground. **(Fig Q)** Tighten the clamp using a 15mm deep socket and ratchet until the axle pipe is snug on the rear tunnel muffler. **(Fig R)**
8. Re-install the stock driver and passenger rear hanger assemblies removed during step 4 of the stock exhaust removal procedure. Verify position and orientation, and secure with a 13mm deep socket and ratchet. **(Fig S)**
9. Locate a 3" Torca clamp, along with the "T" pipe. Slide the clamp over the expanded end of the "T" pipe. **(Fig T)** Insert the hanger into the driver side hanger grommet previously installed in step 7. **(Fig U)** Slide the expanded end of the "T" pipe onto the axle pipe. Install the clamp on the "T" pipe so that the bolt is vertical, with the nut towards the ground and the bolt is towards the passenger side of the car. Tighten the clamp using a 15mm deep socket and ratchet until the "T" pipe is snug on the axle pipe. **(Fig V)**

Note: The use of a soap and water solution may aid in the installation of hanger grommet.

10. Locate a 3" Torca clamp, along with the passenger side tip assembly. Slide the clamp over the expanded end of the tip assembly. Insert the hanger on the tip assembly into the passenger side hanger grommet previously installed in step 7. **(Fig W)** Slide the expanded end of the tip assembly onto the passenger side outlet of the "T" pipe. Install the clamp on the tip assembly so that the bolt is vertical, with the nut towards the ground and the bolt is towards the front of the car. Tighten the clamp using a 15mm deep socket and ratchet until the tip assembly is snug on the "T" pipe. **(Fig X)**

INSTALLATION INSTRUCTIONS CONTINUED ON NEXT PAGE



11. Locate the last 3" Torca clamp, along the driver side tip assembly. Slide the clamp over the expanded end of the tip assembly. Install the clamp on the tip assembly so that the bolt is horizontally above the tip assembly, with the nut towards the center of the car when the expanded end of the tip assembly is installed over the driver side outlet of the "T" pipe. **(Fig Y)**
12. Locate the factory rear tunnel brace, along with the four 13mm nuts. Re-install the brace and tighten all four nuts using a 13mm socket and ratchet. Torque the nuts to 18 ft-lbs (24 N-m). **(Fig Z)**
13. Visually inspect and adjust the exhaust system position, tip alignment, clamp orientation, and exhaust pipe clearance. Adjust the axle pipe depth and rotation to center the T-pipe within the rear suspension sub-frame cut out. Adjust the passenger side tip assembly to center the tip side to side, and up and down within the valance tip cutout. Adjust the depth and rotation of the driver side tip assembly to match the passenger side tip position. **(Fig AA & BB)**
14. When the exhaust system is in the desired location, tighten the nuts on the clamps. Starting at the front of the vehicle, torque the clamp nuts to 45 ft-lbs (61 N-M).
15. It is **STRONGLY SUGGESTED** that all clamps be checked and re-tightened (if necessary) to the recommended torque after initial road testing of the vehicle, as thermal cycling has occurred on the system. Please wait until the system has fully cooled to perform this step.

NOTE: During cold weather start-ups, you may experience an exhaust sound that is deeper and louder in tone than usual. This is temporary and will diminish to normal levels once your engine has reached its normal operating temperature.

NOTE: Immediately following the installation of your exhaust system, you may experience a trace of smoke after initial start-up. DO NOT be alarmed. The smoke is caused by the burning of a small amount of forming oil residue used in the manufacturing process.

INSTALLATION PICTURES ON NEXT PAGE 

CORSA Exhaust Installation Pictures



Fig. G



Fig. H



Fig. I



Fig. J



Fig. K

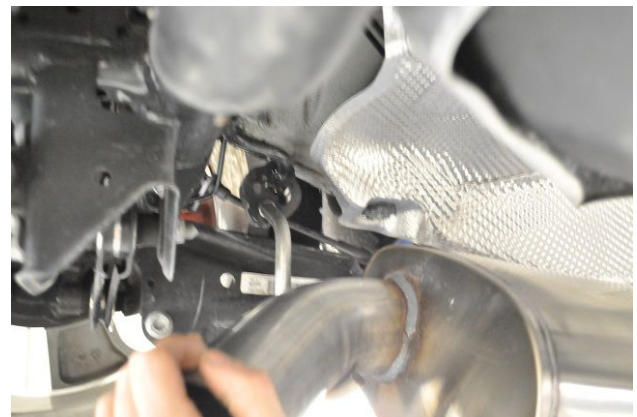


Fig. L

INSTALLATION PICTURES CONTINUED ON NEXT PAGE 

CORSA Exhaust Installation Pictures:

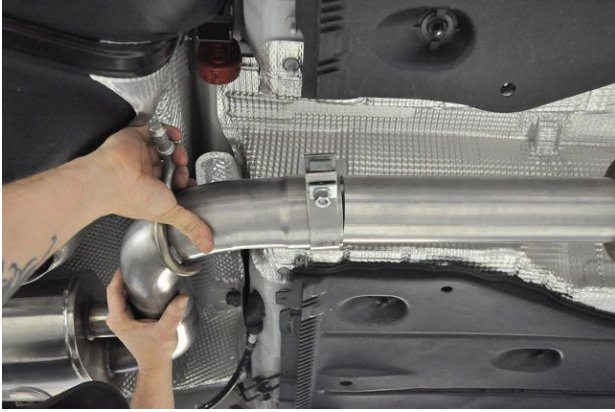


Fig. M



Fig. N



Fig. O



Fig. P



Fig. Q

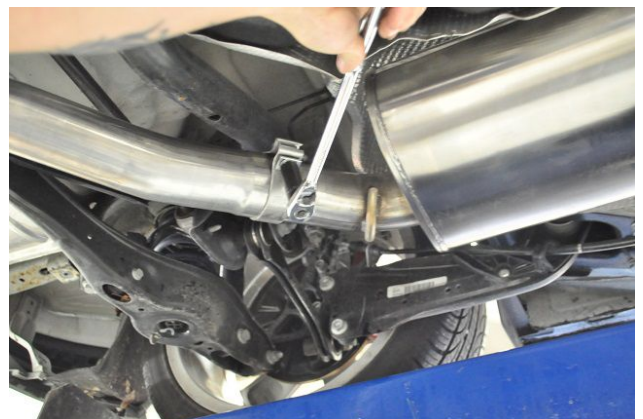


Fig. R

INSTALLATION PICTURES CONTINUED ON NEXT PAGE 

CORSA Exhaust Installation Pictures:



Fig. S



Fig. T



Fig. U



Fig. V



Fig. W



Fig. X

INSTALLATION PICTURES CONTINUED ON NEXT PAGE 

CORSA Exhaust Installation Pictures:



Fig. Y



Fig. Z



Fig. AA



Fig. BB