



INSTALLATION GUIDE

2009+ VW CC 2.0T Dual Outlet Cat Back Exhaust System

Congratulations on your purchase of the AWE Tuning Dual Outlet Cat Back Exhaust System for the 2009+ VW CC 2.0T.

Exquisite build quality with industry leading performance distinguishes this exhaust system from all others.

Contact us with any installation questions.

215-658-1670

AWE-Tuning.com

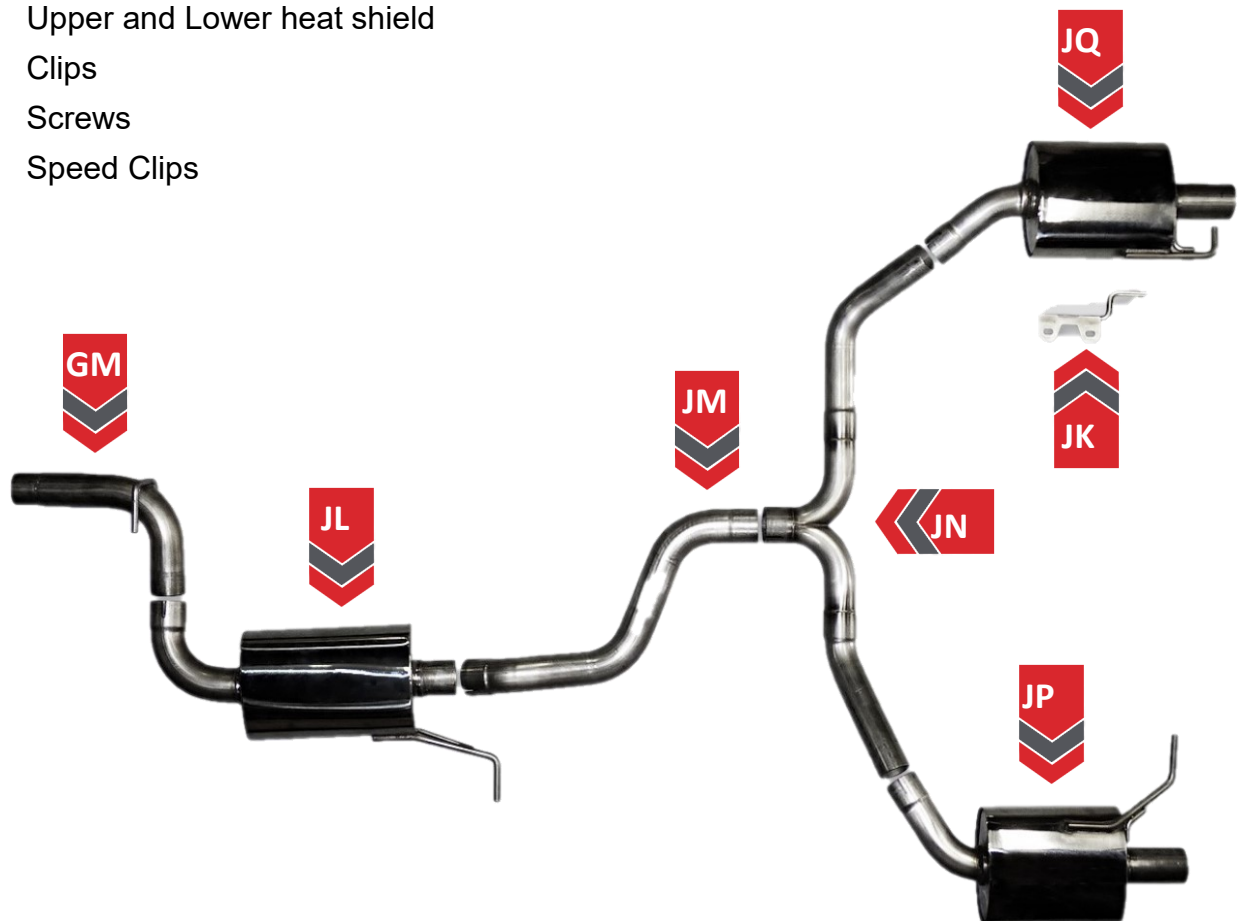
performance@AWE-Tuning.com

PARTS LIST

QTY	Description	Part Number
1	Front section w/60mm OD inlet	GM
1	PS rear chassis hanger	JK
1	Mid muffler	JL
1	Over axle section tube	JM
1	Rear Y-pipe section tube	JN
1	DS rear HR1 resonator	JP
1	PS rear HR1 resonator	JQ
2	102mm slash cut tip	31122253A (chrome) OR 31122253A-BLK (black)
2	2.50" T-bolt Clamp	94106-250
2	2.25in ACCU-SEAL	TAS225
3	2.50in ACCU-SEAL	TAS250
2	M8x1.25x20 flange head bolt	98093A538
2	Hanger lock collar	SRC1-050
1	9/64" allen wrench	7122A19

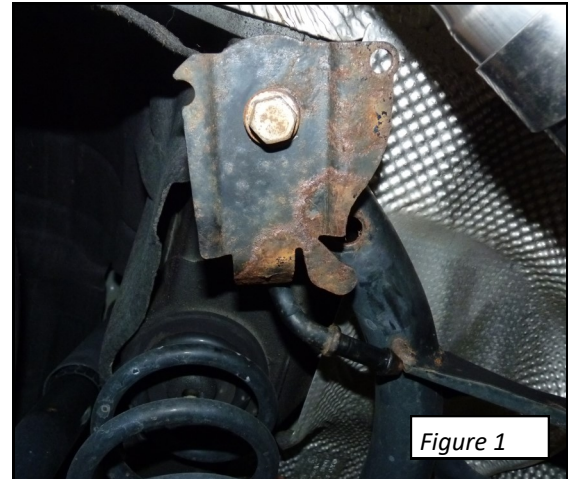
Required Additional Parts

1	Dual Outlet Valance
1	Upper and Lower heat shield
5	Clips
2	Screws
2	Speed Clips



Step 1

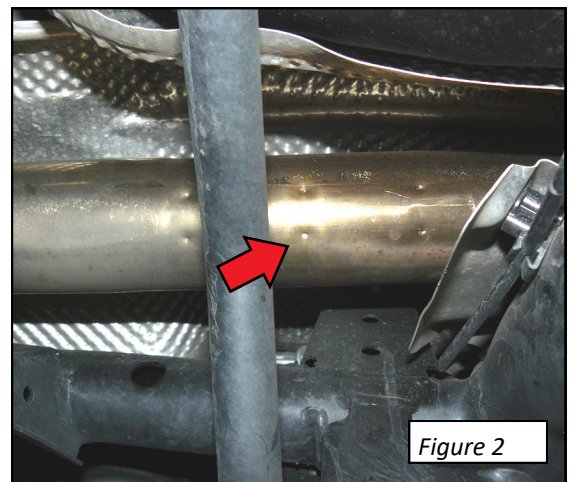
To provide proper clearance for the AWE Tuning exhaust system, rotate the factory sub-frame hanger 180 degrees, as shown in **Figure 1**.



Step 2

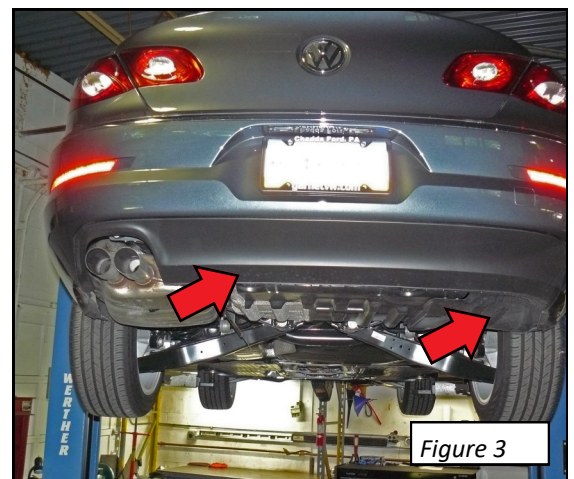
Remove the factory cat back exhaust system. Cutting at the center set of dots, at arrow in **Figure 2**, will allow the stock exhaust to be re-installed in the future, by using factory clamp part number 1K0 253 141N.

If you intend to install an AWE Tuning High Flow Downpipe or any other brand downpipe at the same time as your cat back exhaust system, it is recommended that you install the downpipe first to make cat back exhaust alignment easier.



Step 3

Remove factory single outlet valance and right side block-off cover, at arrows in **Figure 3**.



Step 4

Install the modified factory heat shields and dual outlet valance (purchased separately).

Install left side rear hanger (part JK) into factory holes in the rear floor pan using the supplied M8 bolts, as shown in **Figures 4** and **5**. The mount has elongated holes to allow for adjustment.

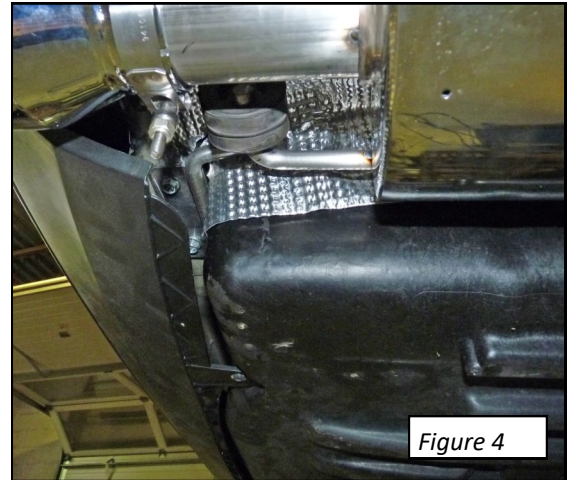


Figure 4

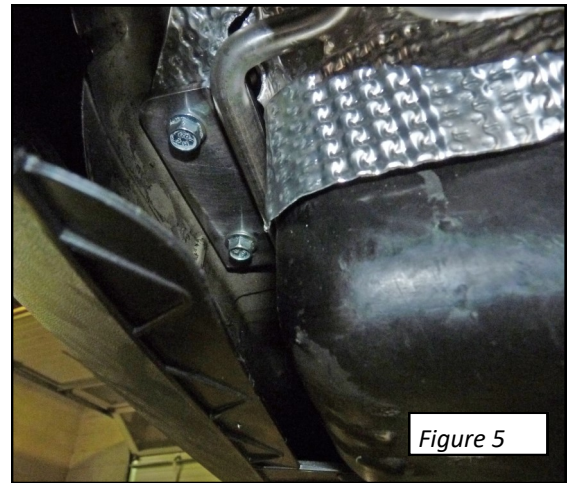


Figure 5

Step 5

Install the AWE Tuning exhaust system. Please note that the factory sleeve clamp between the downpipe and the cat back exhaust is re-used when installing the AWE Tuning exhaust (at arrow in **Figure 6**).

If you intend to install an AWE Tuning High Flow Downpipe or any other brand downpipe at the same time as your cat back exhaust system, it is recommended that you install the downpipe first to make cat back exhaust alignment easier.

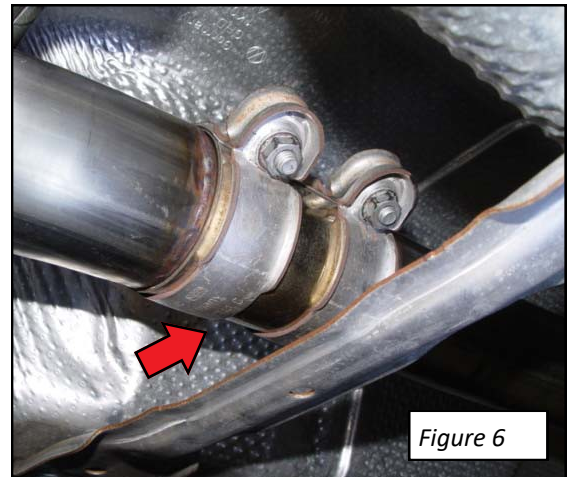


Figure 6

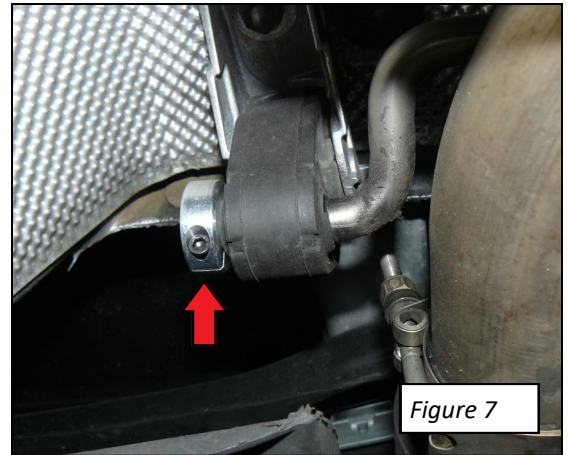
Step 6

Once the exhaust system is properly adjusted, install a hanger post clamp on each of the hanger posts, as shown at arrow in **Figure 7**. Slide the clamp onto the hanger post so that it sits snug against the rubber element, and then tighten down with the enclosed allen wrench.

These clamps will keep the exhaust from sliding laterally under usage and will keep the tips properly aligned in the valence openings.

Set final tip rotation, stagger, and overall length. Then tighten their integrated clamps until the tips will not rotate, then do an additional full turn on the nut.

Please note that all stainless steel exhaust systems will “grow” in length approximately 1” when fully warmed up, and you may want to adjust the tip lengths at this time in anticipation of this growth.



ENJOY

Once installed properly, your AWE Tuning high performance exhaust will provide years of trouble free performance.

Periodic cleaning of exhaust tips is necessary to maintain proper finish, especially in areas prone to road salt and caustic deicing solutions.

Do NOT use metal polish on our Diamond Black or Chrome finish tips. Instead, use a mild soap and water solution or gentle car wax periodically to clean the finish.



Any questions or comments,
please do not hesitate to contact us:

215-658-1670

AWE-Tuning.com

performance@AWE-Tuning.com



AWE Tuning
199 Precision Drive
Horsham, PA 19044
215-658-1670
performance@AWE-Tuning.com

Thank you for choosing AWE Tuning as your performance automotive parts supplier. Please remember that a performance car is only as strong as its weakest link. Therefore, it is vital that you maintain your vehicle to factory specifications.

By installing or using the purchased product, the Consumer accepts this warranty and any specific Manufacturer warranties enclosed.

Limited Warranty

The following warranty is valid only in the United States.

The Manufacturer's full warranty applies to all products sold.

Secor Ltd. (AWE Tuning) warrants to the original retail purchaser (Consumer) this product (CC 2.0T Cat Back Exhaust) against manufacturing defects from date of original purchase for TWO YEARS.

Upon verification of warranty coverage, AWE Tuning will repair or replace the defective product at their discretion, without charge. This is the only remedy the Consumer has for any loss or damage, however arising, due to nonconformity in or defect of the product. This warranty does not cover consequential damage, loss of time or revenues, labor costs, inconvenience, shipping costs, loss of use of vehicle, damage to the vehicle or components, or other incidental or indirect damage.

All warranties are void if the product was not installed by a certified auto mechanic, improperly serviced, modified, or used in a way not intended by the Manufacturer. Use of product in Motorsports or Racing conditions is grounds for warranty denial. Motorsports and Racing is an inherently abusive operational condition, and it is impossible to warranty for this type of usage.

The Consumer is responsible for ensuring that the product is installed in a safe and proper manner, and should cease usage of the product immediately if an unsafe or improper condition is noted. If an unsafe or improper condition is noted, the Consumer should then immediately contact the facility where the product was installed or AWE Tuning directly.

Please contact the original place of purchase for any warranty claims or explanations of this document.