

advanced FLOW engineering

Instruction Manual P/N: 51-11942 / 54-11942

Make: **BMW** Model: **Z4 3.0i** Year: **06-08** Engine: **L6-3.0L**

Magnum Force Stage-2 Intake



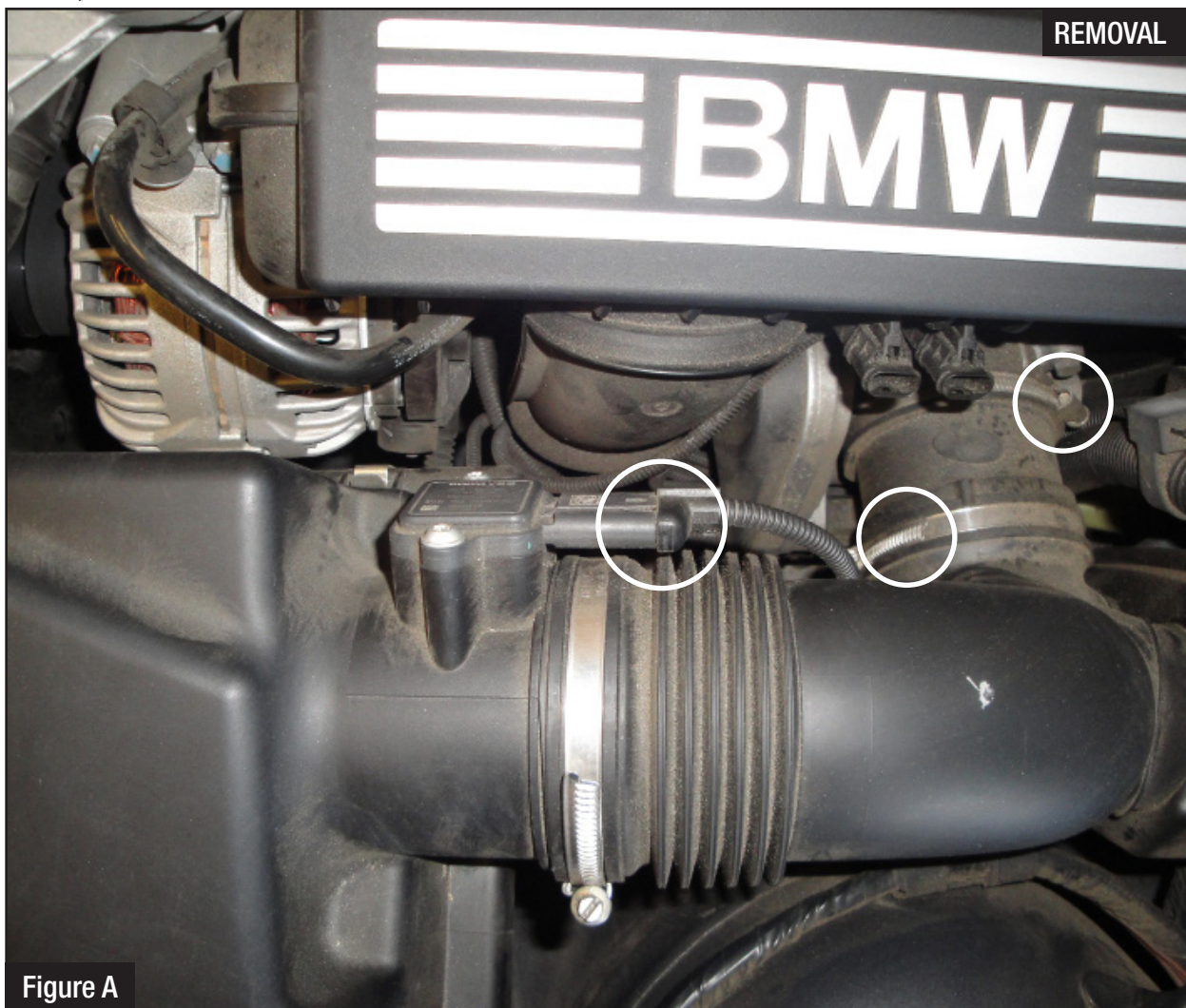
- Please read the entire instruction manual before proceeding.
- Ensure all components listed are present.
- If you are missing any of the components, call customer support at 951-493-7100.
- Ensure you have all necessary tools before proceeding.
- Do not attempt to work on your vehicle when the engine is hot.
- Disconnect the negative battery terminal before proceeding.
- Retain factory parts for future use.

Label	Qty.	Description	Part Number
A1	1	Air Filter	R21-91054
A2	1	Air Filter	R24-91054
B	1	Tube, Intake	05-00769
C	1	Housing	05-11942B2
D	1	Adaptor	05-00676
E	1	Coupler, Angle	05-01152
F	1	Cover	05C01001
G	1	Gasket, MAS	05-00118
H	2	Screws, Hex, M6x1x16	03-50052
I	4	Screws, Button, M6x1x10	03-50113
J	2	Screws, M4x7x10	03-50221
K	4	Screws, Hex, M6x1x25	03-50114
L	1	Washer, Sealing	03-50104
M	2	Nut, Self Locking	03-50059
N	1	Wing Nut	03-50226
O	6	Washers, M6	03-50070
P	1	Gasket, Flange	05-00075
Q	2	Clamp, 056	03-50009

Installation will require the following tools:

Flat head screw driver, Phillips screw driver, 8mm socket, 10mm socket, Ratchet & 5/16 nut driver.





Refer to Figure A for steps 1-5

Step 1: Disconnect the Mass Air Flow (MAF) sensor plug.

Step 2: Loosen the clamp on the OE intake with a 6mm nut driver and pull the intake away from the throttle body. The second clamp should stay attached to the throttle body.

Step 3: Pull the intake out as one piece. Keep in mind that there are two plastic housing mounts. Remember to pull straight up.

Step 4: Loosen up the throttle body clamp with a 6mm nut driver and pull up, not towards you.

Step 5: Loosen the 2 screws and remove the MAF sensor.

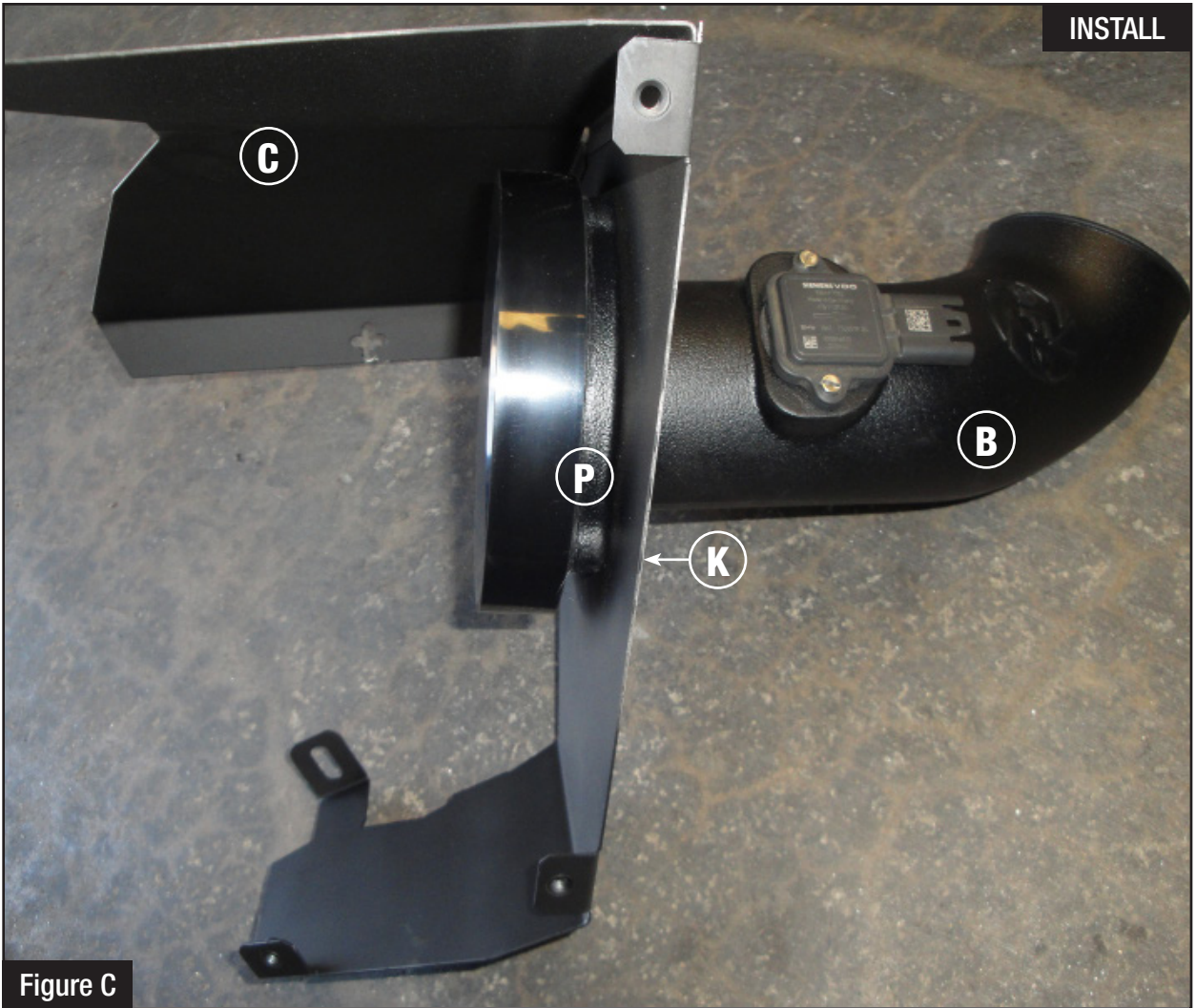


Figure B

Refer to Figure B for steps 6-7

Step 6: Remove the plastic housing mounts. To remove, twist 1/2 turn to the left and pull straight up.

Step 7: Remove the rubber mount on the bottom where the OE housing sat by just pulling the mount off.

**Figure C****Refer to Figure C for steps 8-10**

- Step 8: Route the intake tube (B) inside the housing (C) leaving the flange inside, set the 4 hex screws (K) in place and slide in the flange gasket (P) followed by the filter adaptor.
- Step 9: Install the MAF sensor and round gasket on the intake with the two flat head screws provided in the hardware kit.
- Step 10: Attach the coupler to the tube with clamps provided in the kit. (Do not tighten at this time)



Figure D

Refer to Figure D for steps 11-16

Step 11: Install Kit into vehicle and position.

Step 12: Secure the housing using M6 screws, nuts and washers provided, tighten using a 10mm wrench and a 10mm nut driver.

Step 13: Install the housing using the plastic wing nut (M) and sealing washer (L) (Rubber side down)

Step 14: Re-connect the MAF sensor plug.

Step 15: Tighten clamps using an 8mm nut driver

Step 16: Install the filter onto the adaptor and tighten with an 8mm nut driver.

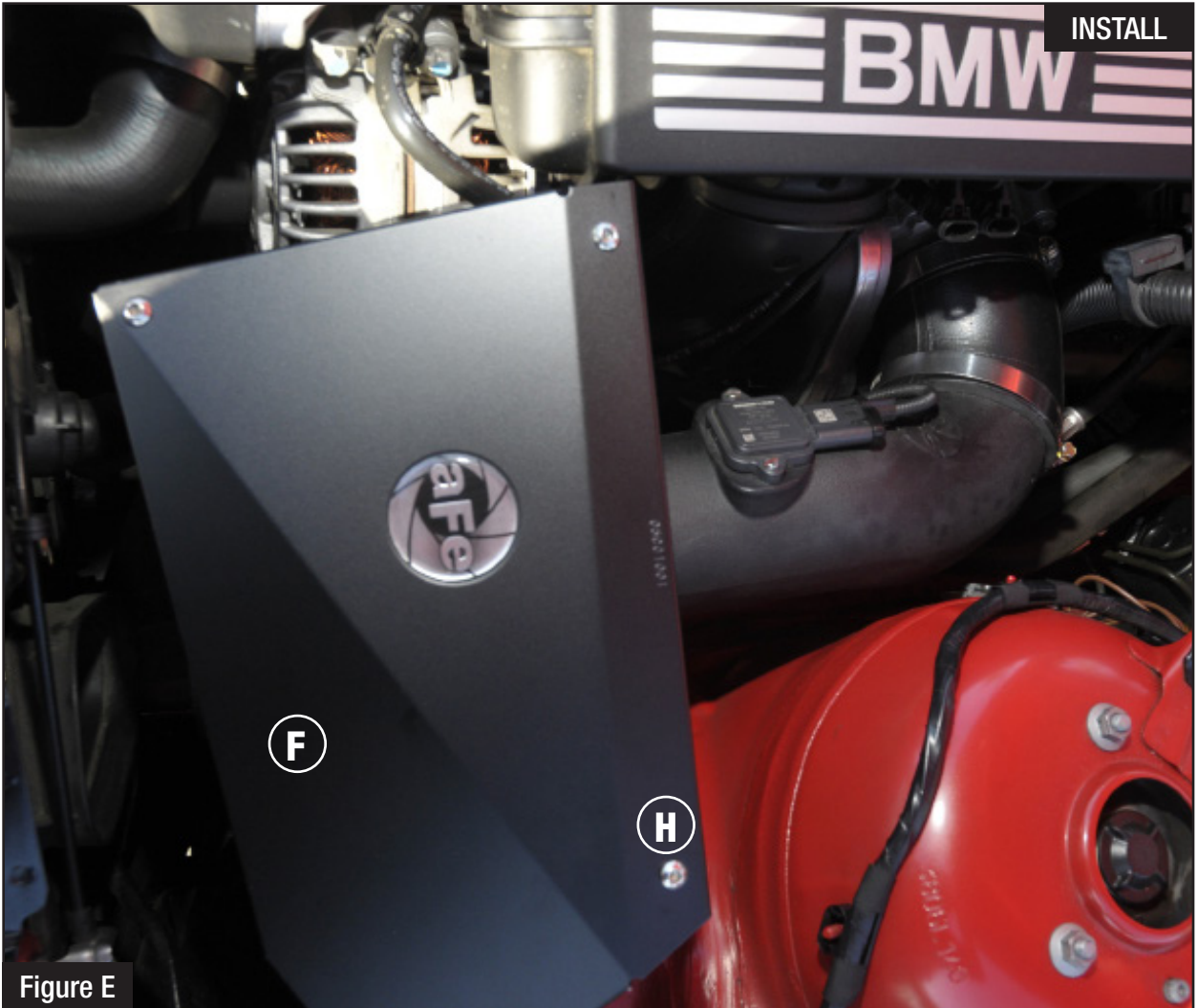


Figure E

Refer to Figure E for step 17

Step 17: Install the housing cover (F) using button head screws (H) and tighten using a 4mm Allen key. Make sure everything is secure and tight. Your installation is now complete. **NOTE: Retighten all connections after approximately 100-200 miles.**

NOTE: Place enclosed CARB EO sticker on a clean/smooth surface on or near the intake system. EO identification label is required in passing the smog check inspection.

Page left blank intentionally

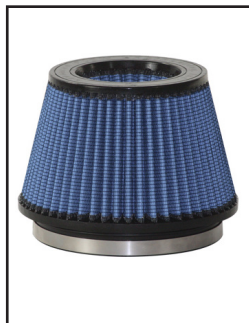


Pro DRY S Air Filter



P/N: 21-91054

Pro 5R Air Filter



P/N: 24-91054

Pre-Filters



P/N: 28-10091 Yellow
P/N: 28-10092 Red
P/N: 28-10093 Black
P/N: 28-10094 Blue

Pro DRY S Restore Kit



P/N: 90-59999

Blue Aerosol Restore Kit



P/N: 90-50001

Blue Squeeze Restore Kit



P/N: 90-50501

aFe Power Hat



P/N: 40-10083

aFe Key Chain



P/N: 40-10103

To purchase any of the items above, view airflow charts, dyno graphs, photos, and video; please go to aFepower.com.

Warranty

aFe warrants their intake systems to be free of defects from workmanship and materials for a period of two (2) years, provided the intake system was: A) installed in an aFe recommended application according to aFe installation instructions; and B) the air filter has been properly cleaned utilizing an aFe cleaning solution and oil (not applicable on Pro DRY S filters). Damage from abuse, improper cleaning, improper oil and improper installation or from open flame is not covered by this limited warranty. In the event of a defect of an aFe product within the period covered by this limited warranty, the purchaser can return the product to the dealer where it was purchased or send the product to aFe at the address listed on the back after obtaining a Return Good Authorization (RGA) number from aFe. The original register receipt will be required as proof of purchase. Purchaser will be entitled to a refund of the entire purchase price or a replacement of the product at aFe's discretion. Purchaser shall be responsible for the cost of shipping the defective product to aFe. An RGA number can be obtained by calling aFe customer service. Products shipped without an RGA number will be refused. A refund or replacement of the product shall be the sole remedy available under this limited warranty and aFe shall not be responsible for consequential or incidental damages. (Some states do not allow this exclusion or limitation of incidental or consequential damages, so the above limitation or exclusion may not apply). This warranty gives you specific legal rights, and you may have other rights, which vary from state to state.



advanced FLOW engineering, inc.
252 Granite Street Corona, CA 92879
TEL: 951.493.7100 • TECH: 951.493.7100 x23
E-Mail: Tech@aFepower.com