



advanced FLOW engineering™  
 P.O. Box 1719  
 Corona, CA 92878  
 Support: 951-493-7100  
 aFepower.com

# Intake kit Installation Instructions: E90/92/93 335i L6-3.0L(t) Stage 2 w/D.A.S.

<b>Kit P/N:</b> 51/54-11473 w/D.A.S.	<b>Tools Required:</b> 5/16" nut driver 1/4" nut driver Flat head screwdriver Pliers, needle nose Driver w/T25 torx bit	<b>Parts list</b> 2 Air filter ( <b>Pro-5R™</b> 24-90054 or <b>Pro Dry S™</b> 21-90054) 1 Housing 1 Tube, intake dual filter 1 7/16" trim seal @ 30.5" L 1 Rubber edge seal @ 11" L 1 Screw, M6 x1 x 12 1 Washer, wavy M6 1 Washer, flat M6	1 05-01016 Driver side D.A.S. 1 05-01017 Passenger side D.A.S.
--------------------------------------	--	---	---



Step 1 Complete Stock Intake.



Step 2 Disconnect vacuum line and pull back.



Step 3 Unclip upper half of air box to remove lid and filter.



Step 4 Pull back rubber mount attached to battery cable. Use pliers if necessary. This will allow stock clamp to be loosened. (To be done in step 5B.)



Step 5 A) Loosen clamp closest to the radiator with 1/4" nut driver. B) Loosen clamp closest to fire wall with 1/4" nut driver. Leave clamps in position.



Step 6 Remove complete air box from vehicle.



Step 7 Remove the 3 rubber grommets from the air box. (To be used in step 9.)



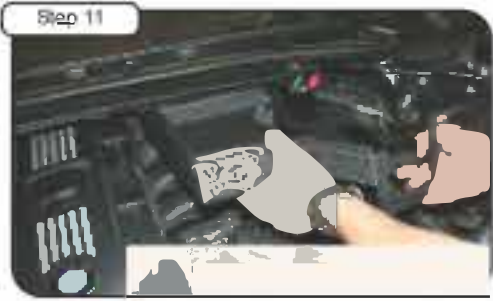
Step 8 A) Attach 7/16" trim seal to top of housing. B) Attach rubber edge trim seal to ram air cut out on housing.



Step 9 Install rubber grommets from step 7 on new housing.



Step 10 Install new tube into vehicle and pull back towards driver fender. Do not tighten clamps.



Step 11 Install housing into factory position.



Step 12 Push down housing allowing grommets to seat. Align threaded insert with hole on housing.



Step 13 Install screw, washer and wavy washer provided, and tighten with 10mm socket or wrench. Tighten clamps to tube with 1/4" nut driver.



Step 14 Install air filters and tighten with 5/16" nut driver and connect vacuum line.



Step 15 Your Intake installation is now complete. Please check all clamps and hoses periodically and tighten.

Continue to page 2 for D.A.S. Installation. →





advanced FLOW engineering™  
 P.O. Box 1719  
 Corona, CA 92878  
 Support: 951-493-7100  
 aFepower.com

# Intake kit Installation Instructions: E90/92/93 335i L6-3.0L(t) Stage 2 w/D.A.S.

Kit P/N: 51/54-11473 w/D.A.S.	<b>Tools Required:</b> 5/16" nut driver 1/4" nut driver Flat head screwdriver Pliers, needle nose Driver w/T25 torx bit	<b>Parts list</b> 2 Air filter ( Pro-5R™ 24-90054 or Pro Dry S™ 21-90054) 1 Housing 1 Tube, intake dual filter 1 7/16" trim seal @ 30.5" L 1 Rubber edge seal @ 11" L 1 Screw, M6 x1 x 12 1 Washer, wavy M6 1 Washer, flat M6	1 05-01016 Driver side D.A.S. 1 05-01017 Passenger side D.A.S.
-------------------------------	--	---	---



Step 16 Complete Stock Configuration.



Step 17 Remove screws on ram air duct using T25 torx bit. (Save for later installation)



Step 18 Pull back ram air duct and remove.



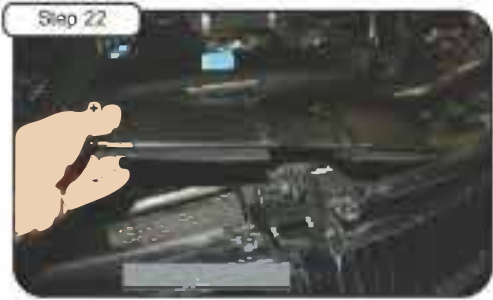
Step 19 With flat head screwdriver, carefully pry and push up plastic pin.



Step 20 Remove plastic pin.



Step 21 Remove plastic clip. Repeat steps 19-21 for remaining clip. (Save for later installation)



Step 22 Lift and pull out cover.



Step 23 The grills are held in place with push clips. To remove, reach in behind each grill and push forward while using other hand to support grill from the front.



Step 24 Install 05-01016 Driver side D.A.S.



Step 25 Position scoop tab on plastic support as shown. (Repeat for 05-01017 Passenger side D.A.S.)



Step 26 For easier installation, the next three steps will require an assistant. Have person A hold the scoops in position as shown.



Step 27 Have person B re-install the cover and secure with plastic pin clips that were removed earlier. (See steps 19-21)



Step 28 Detail of properly installed plastic pin clips. Make sure pin clips are through hole on scoops allowing to secure and hold in place!



Step 29 Re-position ram air duct from step 3. Secure using the 2 screws from step 17 and tighten using T25 torx bit.



Step 30 Your completed D.A.S. installation will look like this. Check and make sure they are secure. Re-install grills by lining up tabs and pushing them in until they snap into place.

**NOTE: Place enclosed CARB EO sticker on or near the device on a smooth, clean surface. EO identification label is required to pass the smog test inspection.**