



INSTALLATION GUIDE

SPORT SPRINGS UNIVERSAL INSTRUCTIONS

300 W. PONTIAC WAY. CLOVIS, CA 93612
PHONE: 800-445-3767 | EMAIL: INFO@STSUSPENSIONS.COM

THANK YOU

Thank you for choosing our high-quality ST Suspensions product. We have spent a great deal of time developing our line of products so that you will receive maximum performance with minimal difficulty during installation. Soon your vehicle will be on the road looking and feeling much improved.

Please take a moment to read all instructions and warnings prior to the installation of your new ST Suspensions product and before operating your vehicle. For any questions or concerns regarding the steps in the installation process, please do not hesitate to call or email our customer support team who are trained to help you through any portion of this process.

Before You Begin:

It is of the utmost importance that you confirm all the components listed on the parts list are in the kit. You can find this list located on the last page(s) of your instructions. Do not begin installation if any part is missing. Instead, please call our customer service specialists.

Customer Support:

Phone: 1-800-445-3767

Email: info@stsuspensions.com

Safety Information:

Warning: Do not work under a vehicle supported only by a jack. Place support stands securely under the vehicle in the manufacturer's specified locations unless otherwise instructed.

Proper use of safety equipment and eye/face/hand protection is necessary when performing any of the following instructions.

We strive for an exceptional experience for all our valued customers. If for any reason you need assistance with your ST Suspensions products, please do not return the product to the store you purchased from, but rather call our dedicated customer service experts, from 7am to 5pm PST.

We recommend that a qualified mechanic, in a properly equipped facility, perform this installation.

It is very to have an assistant available during installation.

Before Driving Your Vehicle:

It is important to double check all brake hoses, cables, and other components to be sure there is no interference. You must also check for wheel/tire to chassis/body interference. If any issues are found, review your installation instructions to be sure no steps were missed, and any problems are corrected.

Make sure your vehicle is aligned immediately following installation.

Check all hardware and torque at intervals for the first 10, 100, and 1000 miles.

Any changes in your vehicle's suspension may result in transformed handling. Please test-drive your vehicle in a remote location so you can become accustomed to the revised driving characteristics.

Perform headlight check and adjustment.

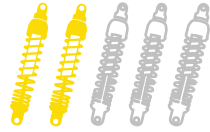
Failure to drive any modified vehicle in a safe manner may result in harm or death.

Never operate your modified vehicle under the influence of drugs, alcohol, or lack of adequate sleep.

Always wear your seatbelt.



DIFFICULTY:



INSTALLATION TIME:

Varies per application

RECOMMENDED TOOLS:

- Properly rated floor jack
- Wheel chocks
- Support stands
- Combination wrench set
- Ratchet wrench and socket set
- Torque wrench
- Quality coil spring compressor
- Safety Glasses

INSTALLATION PREPARATION:

Before beginning the installation process, measure the hub to fender heights for your vehicle and record them in the “Before” section. After your vehicle has been modified, record the new measurements in the “After” section. This way, you can compare the resulting height to the original. When taking the measurements, measure vertically from the center of the wheel to the inner edge of the fender. The total lowering can vary depending on the condition, age, mileage, and optional equipment installed on vehicle.

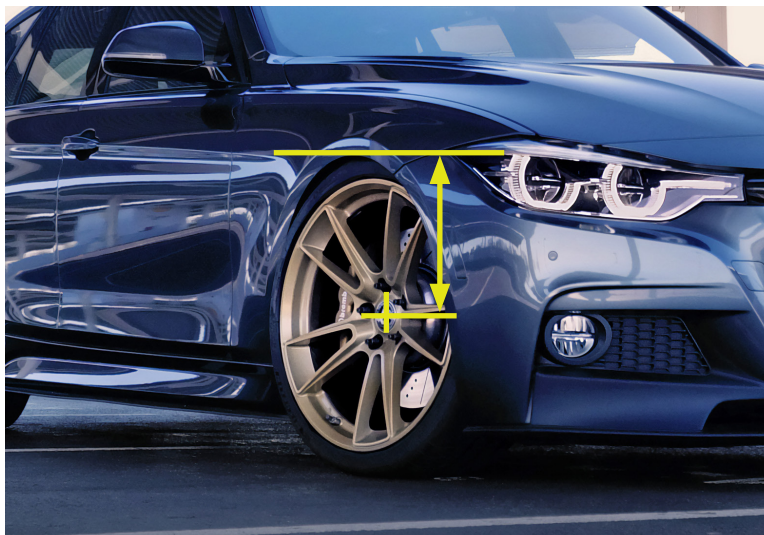
Before:

LF: _____

RF: _____

LR: _____

RR: _____



After:

LF: _____

RF: _____

LR: _____

RR: _____

JACKING, SUPPORTING, AND PREPARING THE VEHICLE

1. Park your vehicle on a smooth, level, concrete, or seasoned asphalt surface.
2. Make sure the vehicle's transmission is in "PARK" (automatic) or first gear (manual).
3. Activate the parking brake.
4. Break loose, but do not spin the wheel lug nuts to ease in removal when the wheels are in the air.
5. Lift the vehicle off the ground using a properly rated floor jack. Lift the vehicle so the tires are approximately 6-8 inches off the ground.
6. Place support stands rated for the vehicle's weight. The stands must be positioned in the factory specified locations. (Refer to the owner's manual). Prior to lowering the vehicle onto stands, make sure the support stands will contact the chassis. It is important that the vehicle is properly supported to prevent any harm to oneself or to the vehicle.
7. Lower the vehicle slowly onto the stands.
8. Remove the wheels.

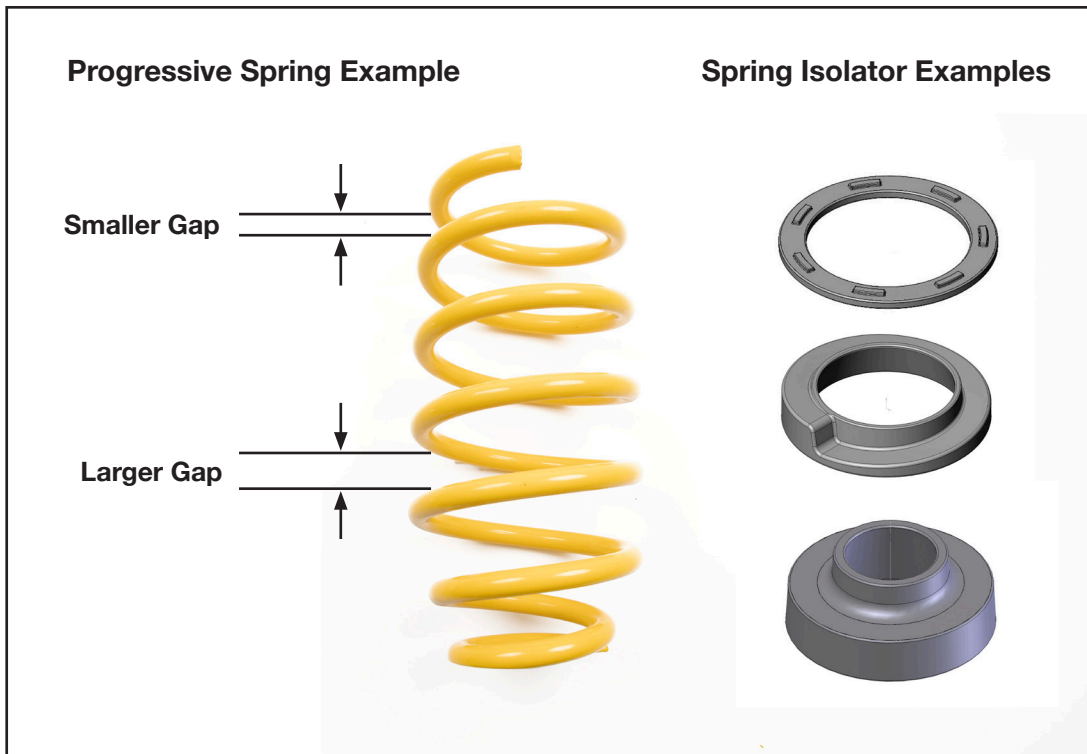


Technician reminder:

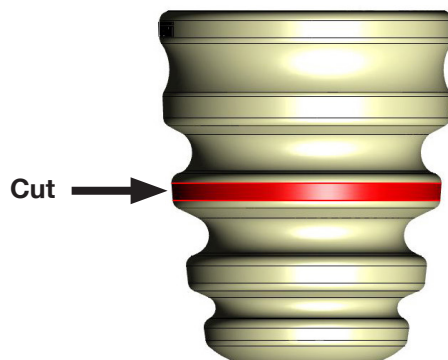
Never work under a vehicle supported only by a jack. It is necessary to place support stands securely under the vehicle in the manufacturer's specified locations unless otherwise instructed.

ST SPORT SPRINGS INSTALLATION

9. A side-by-side comparison between ST Sport Springs and original equipment (stock) springs can be misleading. There are many factors which influence spring design; the ST Sport Springs may look very different from the stock spring. Some differences could be the material thickness may be larger or smaller, the spacing between coils may be larger or smaller, the uninstalled length may be different, and the width (diameter) of the spring can be different. Please be assured these differences are engineered for improved handling and lower ride height compared to the original equipment components.
10. ST Sport Springs are height-tested in a loaded state to simulate the weight of the vehicle. Because of this load testing method, comparing the spring uninstalled length can be misleading. As a rule, if there is a slight difference in length, install the tallest of the pair on the driver's side of the vehicle.
11. Always install all original equipment spring isolators (rubber pads, tube-type insulators, etc.) if so equipped. Please note that all vehicles do not always have spring in isolators. Vehicles equipped with progressive rate springs (coils closer together at one or both ends) must install any original tubing-type isolators on the end of the spring with the closest coils (smaller gap). The rule is "If it came off the vehicle, put it back on."



12. Ensure the spring is properly seated in both the top and bottom spring perches. When installing springs into "helical" perches, the "tail" of the spring should be seated in the deepest part of the perch. Always verify this after installing any spring as the ride height could be incorrect or too high.
13. For strut equipped vehicles; the original bump stop (if equipped) must be trimmed to at least half the length for added suspension travel. On A-arm (A-frame) type equipped vehicles; trimming the bump stops will increase wheel travel. Some ST Sport Springs sets will include replacement bump stops. The bump stop (modified or replacement) MUST be installed or severe damage to the suspension components may occur.

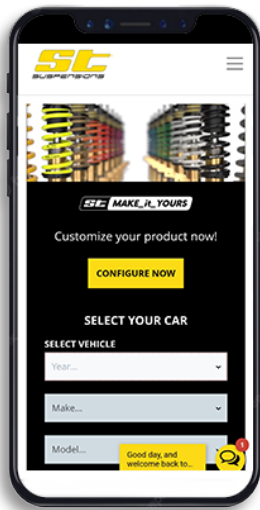


FINALIZING THE INSTALLATION

14. Mount the wheels and tighten the lug nuts.
15. Lift the vehicle and remove the support stands.
16. Carefully lower the vehicle onto the flat ground.
17. Torque the lug nuts to the manufacturer's specification.
18. Check that all components and fasteners have been properly installed and torqued.
19. Read and perform all tasks in the "Before Driving Your Vehicle" section of page 1 of your instructions.

THANK YOU FOR CHOOSING ST SUSPENSIONS.

You are now a part of the ST family and we are eager to catch a glimpse of your newly modified vehicle. Give us a shout out and let us know how much you love our product. Don't forget, we offer other ST related merchandise for you and your vehicle on our website www.stsuspensions.com



STsuspensionsUSA



KW automotive



@st_suspensions

If you have any questions, concerns, or warranty related issues regarding your ST Suspensions product, please call or email our experienced customer service specialists.

Customer Support:

Phone: 1-800-445-3767

Email: info@stsuspensions.com