



Vehicle Applications:

Make: **BMW**
 Model: **428i/ix (F32/33/36)**
 Year: **2014-2016**
 Engine: **2.0L 4cyl turbo N20/N26**

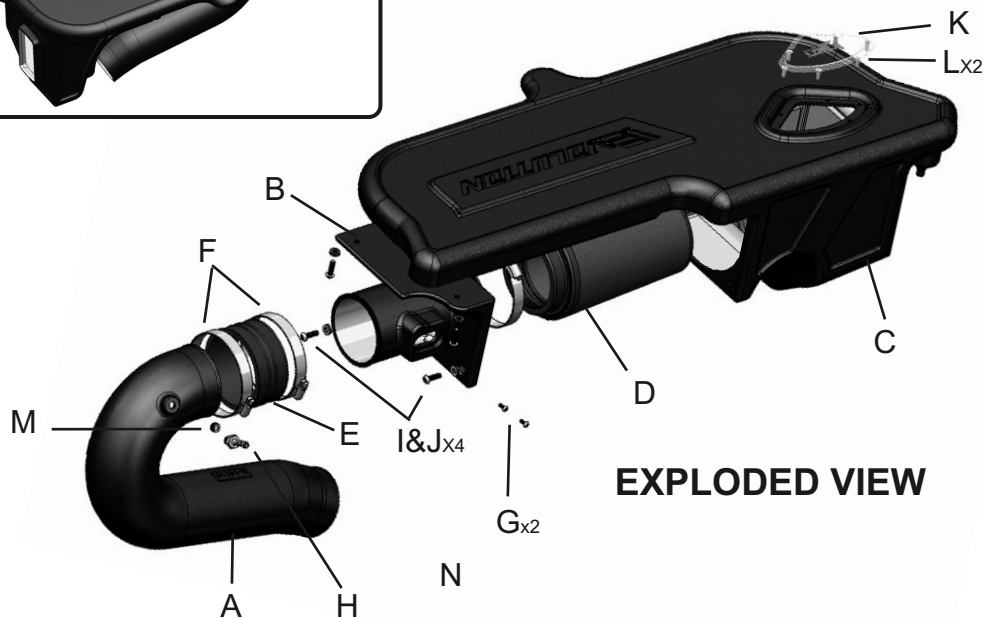
Model: **420i/ix (F32/33)**
 Year: **2014-2016**
 Engine: **2.0L 4cyl turbo N20**

Model: **328i/ix (F30/31/34)**
 Year: **2012-2016**
 Engine: **2.0L 4cyl turbo N20/N26**

Model: **320i/ix (F30/31/34)**
 Year: **2013-2016**
 Engine: **2.0L 4cyl turbo N20**

Model: **228i/ix (F22)**
 Year: **2014-2016**
 Engine: **2.0L 4cyl turbo N20**

Model: **220i/ix (F22)**
 Year: **2014-2016**
 Engine: **2.0L 4cyl turbo N20**



WARNING: FAILURE TO FOLLOW INSTALLATION INSTRUCTIONS AND NOT USING THE PROVIDED HARDWARE MAY DAMAGE THE INTAKE SYSTEM, ENGINE AND COMPONENTS!!!

***Do not attempt to install the intake system while the engine is hot.**
 Severe burn could result from touching hot engine components!

Report any defective or missing parts to the authorized Injen dealer you purchased this product from. Before installing any parts of this system, please read the instructions thoroughly. If you have any questions regarding installation, please contact your Injen Technology dealer. Installation DOES require some mechanical skills. A qualified mechanic is always recommended.

A Limited Lifetime Warranty to the original purchaser against defects in material and workmanship on all Injen intake systems excluding the filter element. Any and all warranty coverage is limited to the repair or replacement of the defective part only, at Injen Technology's discretion. The warranty does not cover incidental or consequential damages, nor does it cover the cost of installation or removal of the defective part or its replacement. Proof of purchase is required.

Item	QTY.	P/N	Discription
A	1	#15119	Rotomold Tube
B	1	#15118	Rotomold Plenum
C	1	#15117	Rotomold Box
D	1	#1105	Dry Filter
E	1	#3037	3.5" straight hose
F	2	#4005	#56 clamps
G	2	#6072	M4 button head screws
H	1	8052	1/8" NPT 1/8" OD fitting
I	4	#6100	M6x20mm screws
J	4	#8047	Rubberized washers
K	1	#15139	Small window
L	2	#6109	Push nut
M	1	#8054	1/8" NPT cap

Instruction Manual P/N:EVO1103

NOTE: This intake kit may not work on vehicles with the following aftermarket modifications.

- Aftermarket Intercooler piping
- Aftermarket intercooler
- Turbo upgrade
- Modified body panels
- Suspension & Chassis modifications

Injen intake systems are street legal in most states unless the state is adopting to California Emissions standards. States that have adopted California emission standards include: Arizona, California, Connecticut, District of Columbia, Maine, Maryland, Massachusetts, New Jersey, New Mexico, New York, Oregon, Pennsylvania, Rhode Island, Vermont, and Washington. These states will require an California Air Resource Board Executive Order Number (CARB E.O.) for the legal use of an Injen intake system in your vehicle for use on public roads or highways. These vehicle will be considered "Legal in California only for racing vehicles competition use only, which may never be used upon a public street or highway. **Please keep your factory air box assembly for any future use.**



The SuperNano-Web filter media is a dry synthetic media that outperforms the competition. The media itself is a proprietary base blend of synthetics and cellulose. Cellulose fibers are larger than synthetic fibers, and have larger spaces between the fibers, causing contaminants to load in the depth of the media and plug the airflow path. This creates higher restriction levels and less capacity. The synthetic fibers in the SuperNano-Web media are submicron in diameter and have small interior fiber spaces, which result in more contaminants being captured on the surface of the media. This can help keep restriction levels low as the filter loads with dirt and containments

If you look at the picture to the left, you can see the Nano-fiber web on top of our base media. That web, or Super-Nano-Web as we like to call it, helps trap smaller particles and protect your engine.

To Clean your filter:

Carefully remove the filter from the housing. Once removed, wipe down the housing using a clean shop towel, being careful not to knock any dirt and/or debris in the air inlet. Your filters can be cleaned by carefully vacuuming the filter media from the dirty side, or by holding the filter with one hand and carefully blowing the filter media at a 45-degree angle from the clean side using low-pressure shop air (15-20 lbs. psi).

****IT IS IMPORTANT TO NOT USE ANY CLEANERS ON THE SUPERNANO-WEB MEDIA OR APPLY ANY OIL!!!***

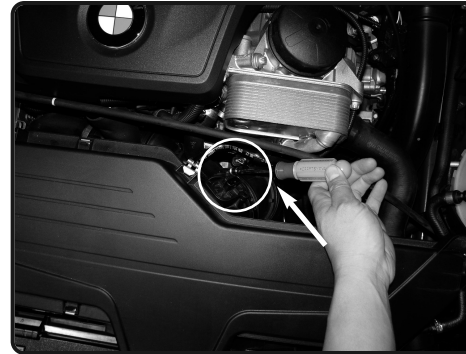
NOTE: DISCONNECT BATTERY BEFORE INSTALLATION!!!



1. Stock air box assembly shown in this picture. Disconnect battery before the install.



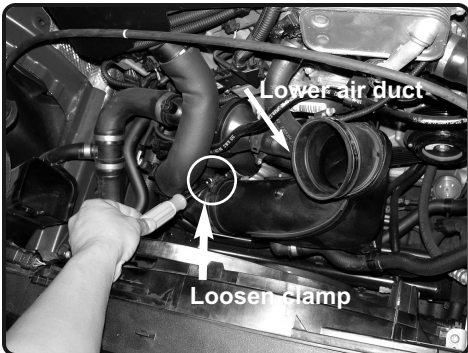
2. Unplug the MAF sensor harness.



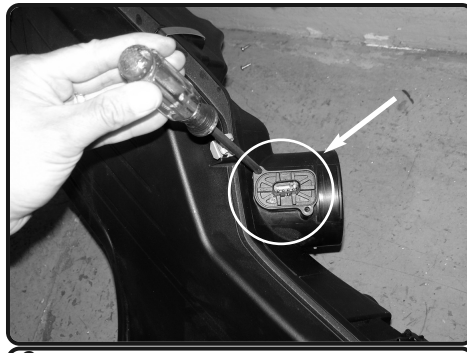
3. Use a 6mm nut driver and loosen the clamp on the MAF sensor housing located below the air box assembly. Also unplug the vacuum line



4. Firmly lift up on the OE air box assembly and remove it from the engine bay. Remove the engine cover.



5. Use a 7mm nut driver to loosen the clamp on the lower turbo air duct. The upper air duct will be removed from the engine bay and no longer be used.



6. Use a torx driver and remove the two torx screws from the MAF sensor located on the OE air box assembly and then remove the MAF sensor from the MAF sensor housing.



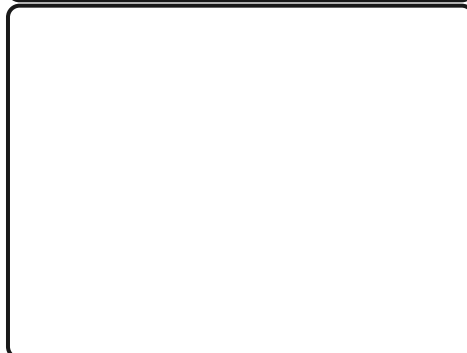
7. Install the MAF sensor into the new intake tube plenum.



8. Secure and tighten the MAF sensor using provided M4 button head screws.



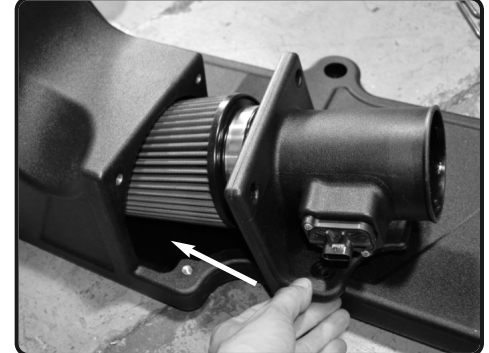
9. Install the filter to the plenum. Secure and tighten using 8mm nut driver.



10.



11.



12. Now install the plenum assembly into the airbox.

Instruction Manual P/N:EVO1103

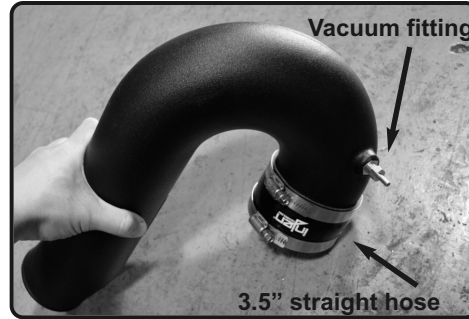


13. Now secure and tighten the plenum to the air box using 4 M6 screws with rubberized washers.



OEM rubber grommets

14. Remove the 2 factory rubber grommets from the OEM air box and install to the 2 larger holes on air box. These will be used to secure the injen evolution air box.



Vacuum fitting

3.5" straight hose

15. Please verify if vehicle is equipped with vacuum line, this fitting will be used. Install the provided 3-1/2" straight hose with clamps provided to tube.



1/8" NPT cap

16. If vehicle is not equipped with vacuum line, remove the 1/8" brass fitting and install the provided 1/8" NPT cap. Secure and tighten.



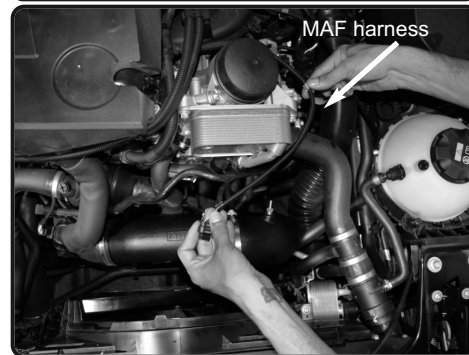
OEM intake tube

17. Install the new intake tube to the OEM intake tube.



Intake tube

18. Position tube to sit in the center, and tighten the clamp.



MAF harness

19. Pull back the MAF sensor harness away from oil cooler. This will allow to extend the MAF sensor harness.

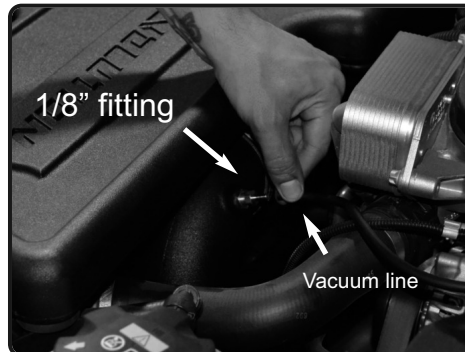


20. Install the air box assembly into the vehicle. Position the mounting points to the OEM location and secure.



3.5" Straight hose

21. Connect the intake tube to the plenum. Secure and tighten using 8mm nut driver.



1/8" fitting

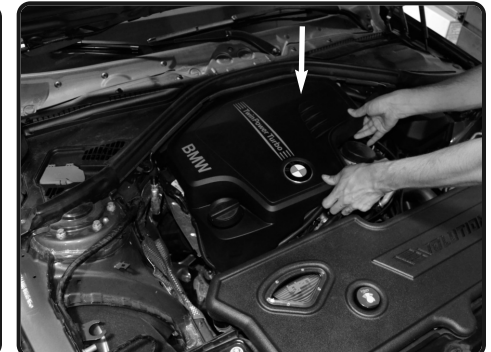
Vacuum line

22. If vehicle is equipped with vacuum line, connect the vacuum line to the fitting. If not equipped see step 16.



MAF harness

23. Re-connect the MAF sensor harness.



24. Re-install the engine cover.



Congratulations! You have just completed the installation of this intake system. Periodically, check the alignment of the intake, normal wear and tear can cause nuts and bolts to come loose. **Note: Check clearance and adjust if needed! Failure to check the alignment and adjust the intake can cause damage that will void the warranty. Injen Technology is not responsible for any damages caused by/from improper installation.**

Test Drive:

1. With the transmission in neutral or park and the parking brake engaged, start the engine. Listen for air leaks or odd noises. If air leaks are detected, secure hoses and connections. For any odd noises, inspect entire system for cause and adjust intake as needed. The Injen intake will function identically to the factory system but will be louder and more powerful.
2. Perform a road test. Listen for odd noises or rattles and fix as necessary.
3. If there are no issues, continue to enjoy your added performance from the Injen performance Intake kit.
4. Injen Technology recommends you periodically check clearance and adjust if needed! Failure to check the alignment and adjust the intake can cause damage that will void the warranty. Injen Technology is not responsible for any damages caused by/from improper installation.

1. Upon completion of the installation, reconnect the negative battery terminal before you start the engine.
2. Align the entire intake system for the best possible fit. Once the intake has been properly fitted continue to tighten all nuts, bolts and clamps.
3. Periodically, recheck the alignment of the intake system and make sure there is proper clearance around and along the length of the intake. Failure to follow proper maintenance procedures may cause damage to the intake and will void the warranty.
4. Start the engine and listen carefully for any odd noises, rattles and/or air leaks prior to taking it for a test drive. If any problems arise go back and check the vacuum lines, hoses and clamps that maybe causing leaks or rattles and correct the problem.
5. Check the filter for excessive dirt build up. Clean or replace the filter with an original Injen filter (can be bought on-line at "injenonline.com"). Congratulations! You have just completed the installation of the best intake system sold on the market. Enjoy the added power and performance of your new intake system.