



Tools required:

1. Ratchet and extension
2. 10mm socket
3. Phillips screwdriver
4. Flat head screwdriver
5. Pliers
6. 8mm nut driver

Part number SP1978

2004-06 Nissan Altima V6 3.5L

New MR Technology

- 1- MR Tech 2 piece cold air intake
- 1- **3 1/2" Injen/AMSOIL dry filter (#1021) with inverted cone**
- 1- **CCV Breather Box w/ 1 port (#6060)**
- 1- 3" straight hose (#3044)
- 1- 3 1/8" straight hose (#3054)
- 1- 1 1/8" x 2" coupler hose (#3112)
- 4- Power-Bands (.362) .048 (#4004)
- 2- Mini-bands .016 (#4017)
- 1- M6 Vibra-mount (#6020)
- 1- M6 flange nut (#6002)
- 1- Fender washer (#6010)
- 1- T-20 torx bit (#6021)
- 1- Instruction

Note: The C.A.R.B Exempt sticker must be attached under the hood in a manner such that it is easily viewed by an emissions inspector

Congratulations! You have just purchased the best engineered, dyno-proven cold air intake system available.

Please check the contents of this box immediately.

Report any defective or missing parts to the Authorized Injen Technology dealer you purchased this product from. Before installing any parts of this system, please read the instructions thoroughly. If you have any questions regarding installation please contact the dealer you purchased this product from. Installation DOES require some mechanical skills. A qualified mechanic is always recommended. *Do not attempt to install the intake system while the engine is hot. The installation may require removal of radiator fluid line that may be hot. Injen Technology offers a limited lifetime warranty to the original purchaser against defects in materials and workmanship. Warranty claims must be handled through the dealer from which the item was purchased.

Injen Technology 244 Pioneer Place Pomona, CA 91768 USA

Please check the contents of this box immediately.

Note: This intake system was Dyno-tested with an Injen filter and Injen parts the use of any other filter or part will void the warranty and CARB exemption number.

Parts and accessories are available on line at "Injenonline.com"

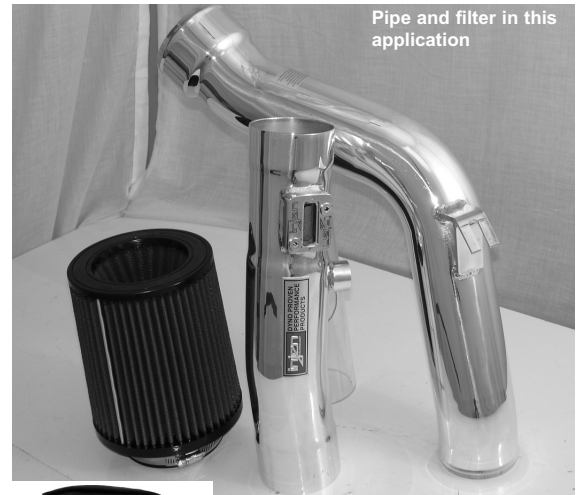
Note: The installation of this cold air intake does require mechanical skills. Removal of the front bumper requires loosening and removing several plastic plugs and screws that may be difficult. It is recommended that this system be installed by a professional mechanic. Be sure to disconnect the negative terminal before proceeding.

Congratulations! You have just purchased the worlds first tuned intake system.

MR Technology, Leading the way!



Fig. 1



Pipe and filter in this application



Hydro-shield used on this application X-1037



Fig. 2
Remove the four m6 bolts that secure the engine cover over the intake manifold. Once all bolts have been removed, continue to remove the engine cover.



Fig. 3
Remove plastic expanding plugs holding the front air scoop over the radiator. Once all plugs have been removed, continue to remove the air scoop.



Fig. 4
Loosen clamps and remove bolts from the stock air intake box cleaner in order to remove the entire air cleaning assembly.



Fig. 5
Loosen clamp at the throttle body and remove the air intake duct. **At this point, it will be necessary to remove the front bumper. Remove 9 clips on top of the bumper, two 10mm screws on each side of the bumper, four additional sheet screws and 5 plastic clips.**



Fig. 6
Once the bumper has been removed continue to disconnect and remove the plastic air intake resonator box.

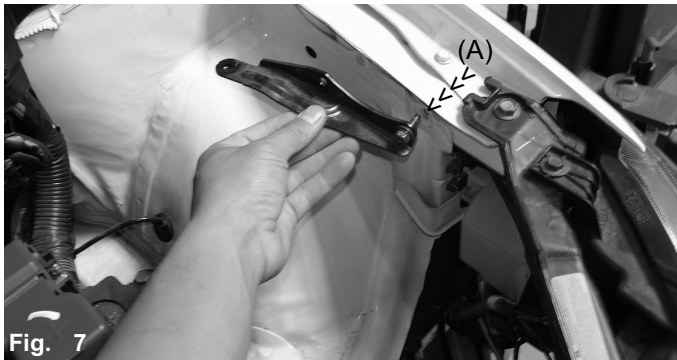


Fig. 7
The bracket used to hold the stock air box in place will no longer be used. Remove the stock bracket to make room for the m6 vibra-mount. New location for the vibra-mount (A).



Fig. 8
Press the 3 1/8" straight hose over the throttle body and use two .362 power-bands on the hose. Tighten the band located over the throttle body at this point.

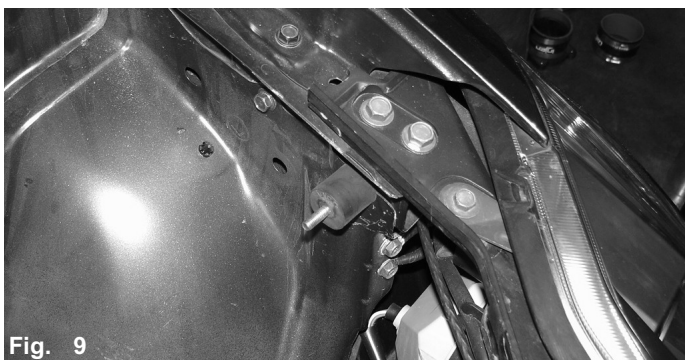


Fig. 9
Take the vibra-mount and screw it into fender wall. Turn the vibra-mount into the fender wall until it bottoms out.



Fig. 10
Insert the top end of the intake into the throttle body hose. Semi-tighten the other power-band just enough to hold the intake in place.



Fig. 11

Insert the 1 1/8" CCV hose over the CCV box large port. Use the mini-bands to secure the hose in place, tighten the band on the CCV box port at this time.

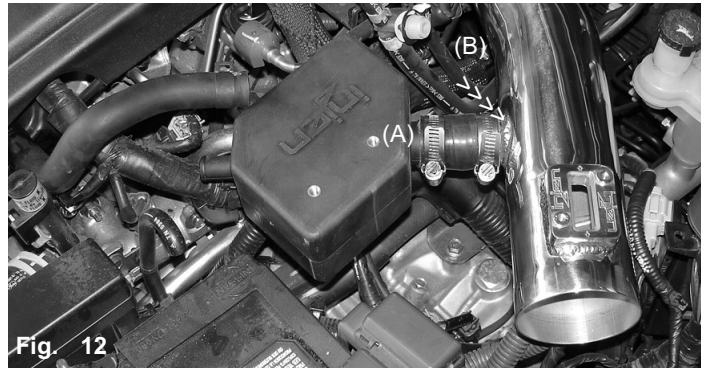


Fig. 12

Press the assembled CCV box over the large intake port as shown above (A). Adjust entire CCV box and the tighten mini-band on the intake port (B).



Fig. 13

Press the stock breather hose over the open CCV box port as shown above.

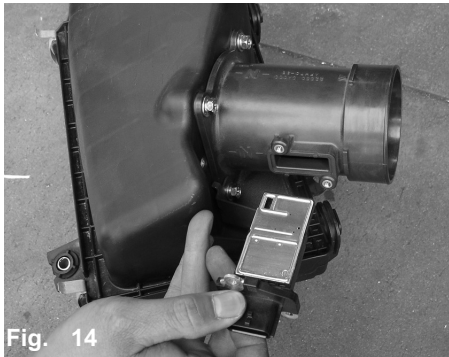


Fig. 14

Use the torx bit in this kit to unbolt screws from the MAF sensor. Carefully, remove the MAF sensor from MAF sensor housing.



Fig. 15

Take the MAF sensor and insert it into the machined MAF sensor adapter.

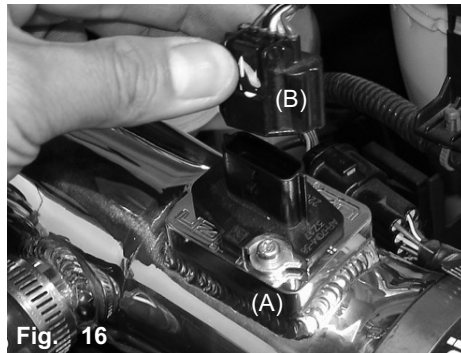


Fig. 16

Use the stock screws to secure MAF sensor to the MAF sensor adapter (A). Insert MAF sensor harness plug over the sensor clip as shown above (B).

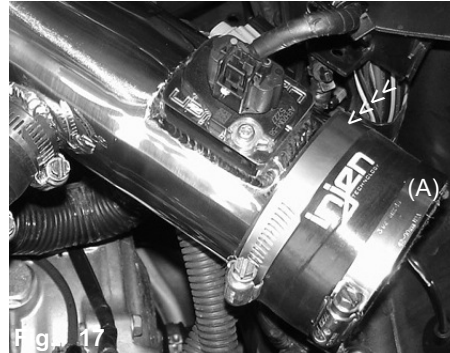


Fig. 17

Press the 3" straight hose over the end of intake and tighten band located on the intake side. The second band is not tightened yet (A).

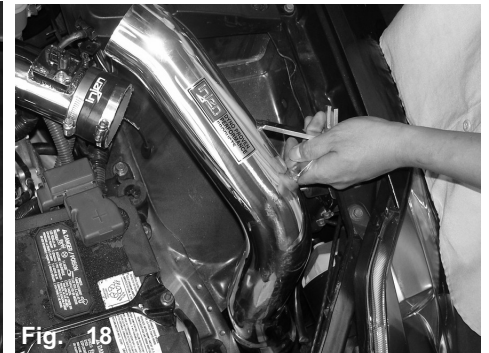


Fig. 18

Carefully, lower the secondary intake into the resonator opening and into the bumper corner.

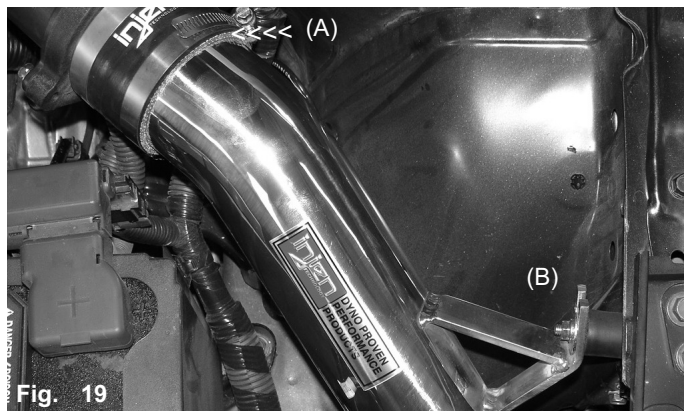


Fig. 19

Press the top end of the intake into the primary hose (A). Align intake bracket to the vibra-mount stud (B). Adjust secondary intake and semi-tighten band (A). Place fender washer and m6 flange nut over the vibra-mount stud without tightening yet (B).



Fig. 20

Align entire assembled intake and use a Ratchet or nut driver to tighten the m6 flange nut to the vibra-mount.

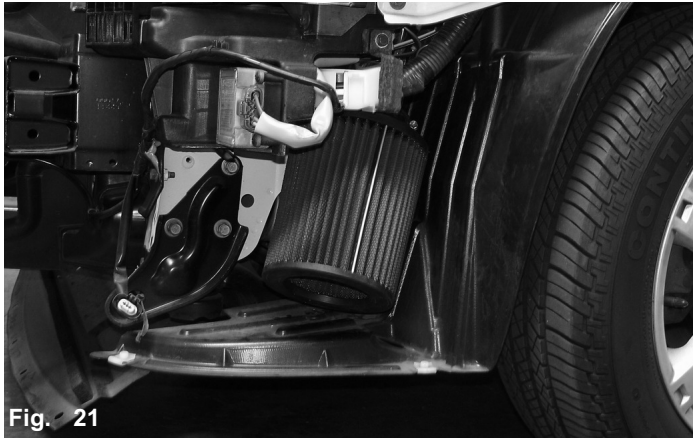


Fig. 21

Press the 3 1/2" filter over the end of the secondary intake and tighten the clamp on the filter neck.



Fig. 22

Congratulations! You have just completed the installation of The World's First Tuned Intake. Periodically, check the cold air for fitment in order to avoid any damage to your intake.

1. Upon completion of the installation, reconnect the negative battery terminal before you start the engine.
2. Align the entire intake system for the best possible fit. Once the intake has been properly fitted continue to tighten all nuts, bolts and clamps.
3. Periodically, recheck the alignment of the intake system and make sure there is proper clearance around and along the length of the intake. Failure to follow proper maintenance procedures may cause damage to the intake and will void the warranty.
4. Start the engine and listen carefully for any odd noises, rattles and/or air leaks prior to taking it for a test drive. If any problems arise go back and check the vacuum lines, hoses and clamps that maybe causing leaks or rattles and correct the problem.
5. Check the filter for excessive dirt build up. Clean or replace the filter with an original Injen filter (can be bought on-line at "injenonline.com"). Congratulations! You have just completed the installation of the best intake system sold on the market. Enjoy the added power and performance of your new intake system.

