



# Instruction Manual P/N:SP1687

**NOTE:** This intake kit may not work on vehicles with the following aftermarket modifications.

- Aftermarket Intercooler piping
- Aftermarket intercooler
- Turbo upgrade
- Modified body panels
- Suspension & Chassis modifications

Injen intake systems are street legal in most states unless the state is adopting to California Emissions standards. States that have adopted California emission standards include: Arizona, California, Connecticut, District of Columbia, Maine, Maryland, Massachusetts, New Jersey, New Mexico, New York, Oregon, Pennsylvania, Rhode Island, Vermont, and Washington. These states will require an California Air Resource Board Executive Order Number (CARB E.O.) for the legal use of an Injen intake system in your vehicle for use on public roads or highways. These vehicle will be considered "Legal in California only for racing vehicles competition use only, which may never be used upon a public street or highway. **Please keep your factory air box assembly for any future use.**



The SuperNano-Web filter media is a dry synthetic media that outperforms the competition. The media itself is a proprietary base blend of synthetics and cellulose. Cellulose fibers are larger than synthetic fibers, and have larger spaces between the fibers, causing contaminants to load in the depth of the media and plug the airflow path. This creates higher restriction levels and less capacity. The synthetic fibers in the SuperNano-Web media are submicron in diameter and have small interior fiber spaces, which result in more contaminants being captured on the surface of the media. This can help keep restriction levels low as the filter loads with dirt and containments

**injen**  
TECHNOLOGY

Existing media without Injen SuperNano-Web Technology

Superior Injen SuperNano-Web Technology

A New Generation of Filters  
Designed to perform and  
filter like no other

INJEN SuperNano-Web Technology

If you look at the picture to the left, you can see the Nano-fiber web on top of our base media. That web, or SuperNano-Web as we like to call it, helps trap smaller particles and protect your engine.

### **To Clean your filter:**

Carefully remove the filter from the housing. Once removed, wipe down the housing using a clean shop towel, being careful not to knock any dirt and/or debris in the air inlet. Your filters can be cleaned by carefully vacuuming the filter media from the dirty side, or by holding the filter with one hand and carefully blowing the filter media at a 45-degree angle from the clean side using low-pressure shop air (15-20 lbs. psi).

***\*IT IS IMPORTANT TO NOT USE ANY CLEANERS ON THE SUPERNANO-WEB MEDIA OR APPLY ANY OIL!!!***

**NOTE: DISCONNECT BATTERY BEFORE INSTALLATION!!!**

# Instruction Manual P/N:SP1687



1. Stock intake system shown.



2. Loosen the clamp on the throttle body using phillips screwdriver or 5.5mm socket or screw.



7. Disconnect the MAF sensor harness and pull harness cable from the air box.



3. Carefully un-clip the the push clips and remove the scoop from vehicle.



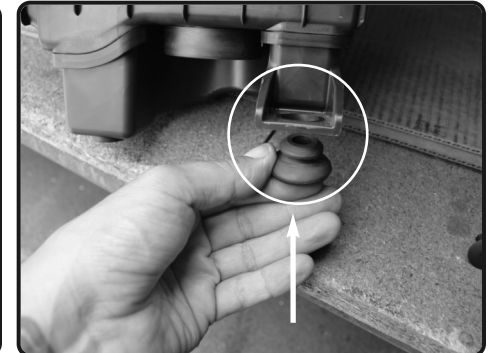
4. Loosen the 2 bolts holding in the lower part of the air box.



5. Now un-clip the upper part of the air box assembly. Lift up and remove from the vehicle.



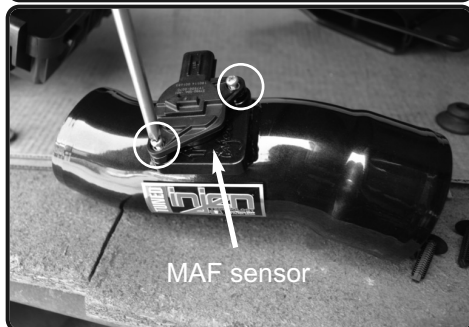
6. Carefully lift up corner of air box, this will require some force. Remove the bottom half of the air box out of vehicle.



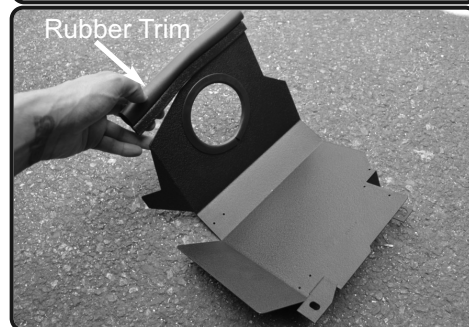
7. Now remove the OEM grommet from the air box. This will be used on new injen heatshield.



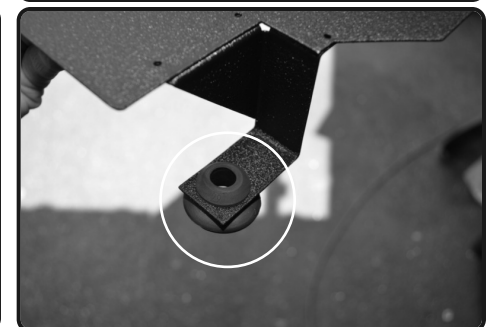
8. Loosen the 2 screws holding in the MAF sensor and remove. Save screws for later install.



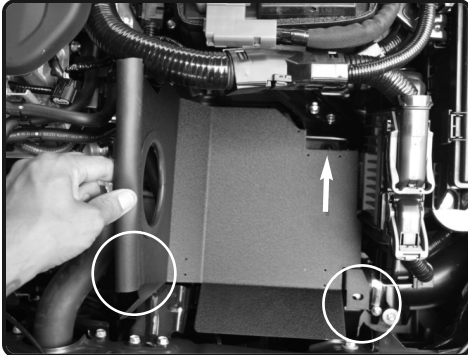
9. Now install the MAF sensor into the new injen intake tube. Secure using the OEM screws from the previous step.



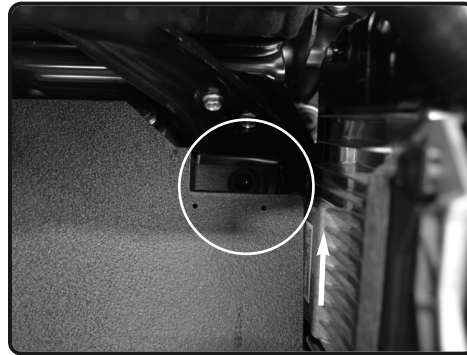
10. Add the Rubber trim to the top of the heatshield, and the vinyl trim to hole on heatshield.



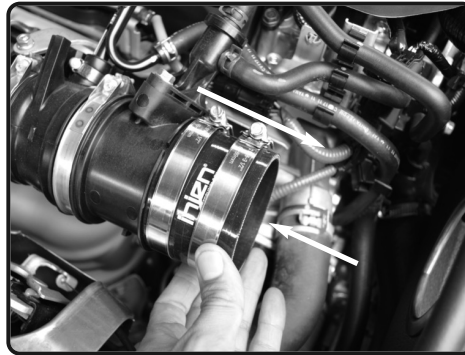
11. Install the OEM from step 7 and secure to the hole on tab.



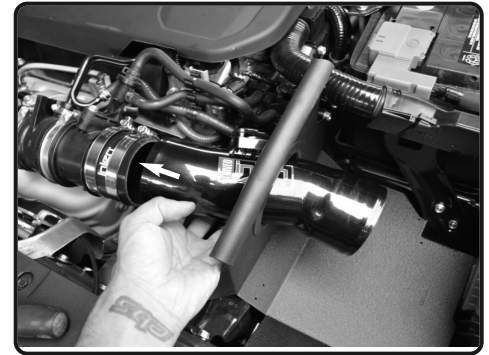
**12.** Install the heatshield and position the brackets to the oem air box mounting locations.



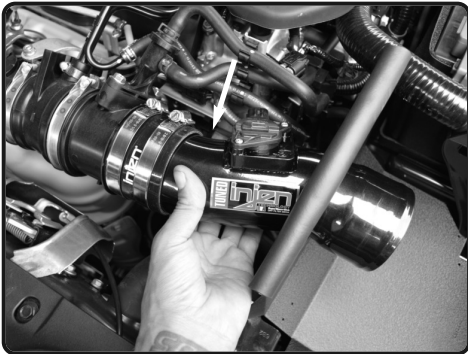
**13.** Make sure the heatshield bracket with grommet is seated on the stud.



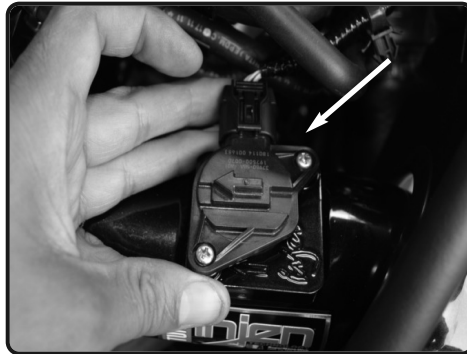
**14.** Attach the hose with clamps to the intake tube.



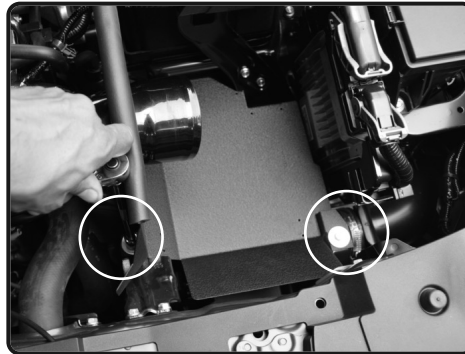
**15.** Install the intake tube assembly into the vehicle through heatshield and position.



**16.** Rotate and position.



**17.** Re-connect the MAF sensor harness.



**18.** With provided M6 screws and small washers, secure the heatshield and tighten using 10mm socket or wrench.



**19.** Install and tighten filter using 8mm nut driver.



**20.** Re-install the scoop and secure.



Congratulations! You have just completed the installation of this intake system. Periodically, check the alignment of the intake, normal wear and tear can cause nuts and bolts to come loose. **Note: Check clearance and adjust if needed! Failure to check the alignment and adjust the intake can cause damage that will void the warranty. Injen Technology is not responsible for any damages caused by/from improper installation.**

## Test Drive:

1. With the transmission in neutral or park and the parking brake engaged, start the engine. Listen for air leaks or odd noises. If air leaks are detected, secure hoses and connections. For any odd noises, inspect entire system for cause and adjust intake as needed. The Injen intake will function identically to the factory system but will be louder and more powerful.
2. Perform a road test. Listen for odd noises or rattles and fix as necessary.
3. If there are no issues, continue to enjoy your added performance from the Injen performance Intake kit.
4. Injen Technology recommends you periodically check clearance and adjust if needed! Failure to check the alignment and adjust the intake can cause damage that will void the warranty. Injen Technology is not responsible for any damages caused by/from improper installation.

1. Upon completion of the installation, reconnect the negative battery terminal before you start the engine.
2. Align the entire intake system for the best possible fit. Once the intake has been properly fitted continue to tighten all nuts, bolts and clamps.
3. Periodically, recheck the alignment of the intake system and make sure there is proper clearance around and along the length of the intake. Failure to follow proper maintenance procedures may cause damage to the intake and will void the warranty.
4. Start the engine and listen carefully for any odd noises, rattles and/or air leaks prior to taking it for a test drive. If any problems arise go back and check the vacuum lines, hoses and clamps that maybe causing leaks or rattles and correct the problem.
5. Check the filter for excessive dirt build up. Clean or replace the filter with an original Injen filter (can be bought on-line at "injenonline.com"). Congratulations! You have just completed the installation of the best intake system sold on the market. Enjoy the added power and performance of your new intake system.