



Free Flow Exhaust Installation Instructions

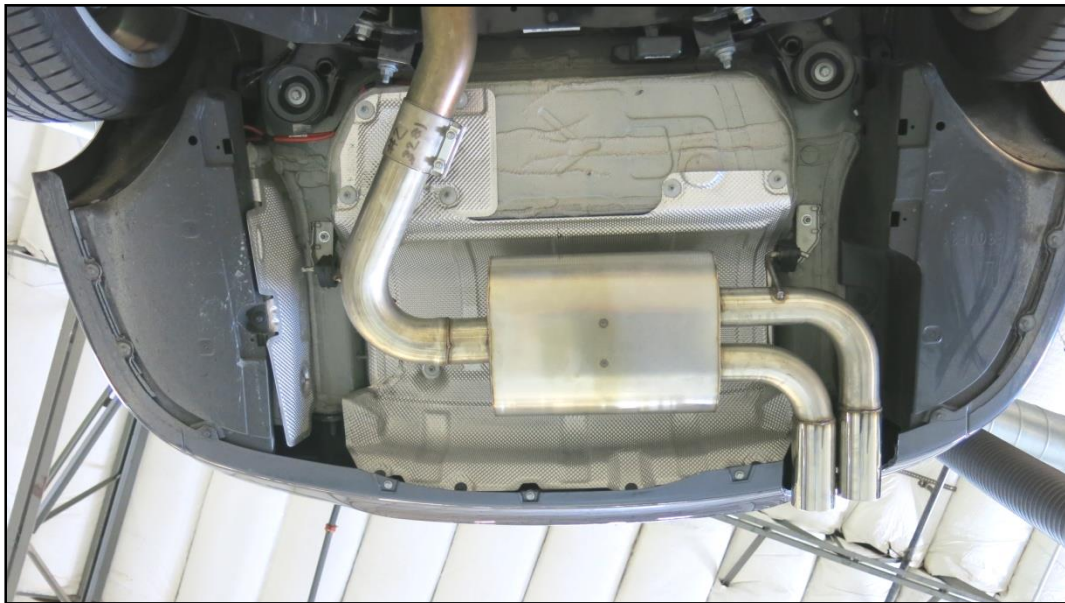
PART NUMBER: D660-0069(-BLK)

APPLICATION: 2016-18 330i & xDrive (F30)
2016-18 330i xDrive (F31)
2016-18 430i & xDrive (F32/F33/F36)

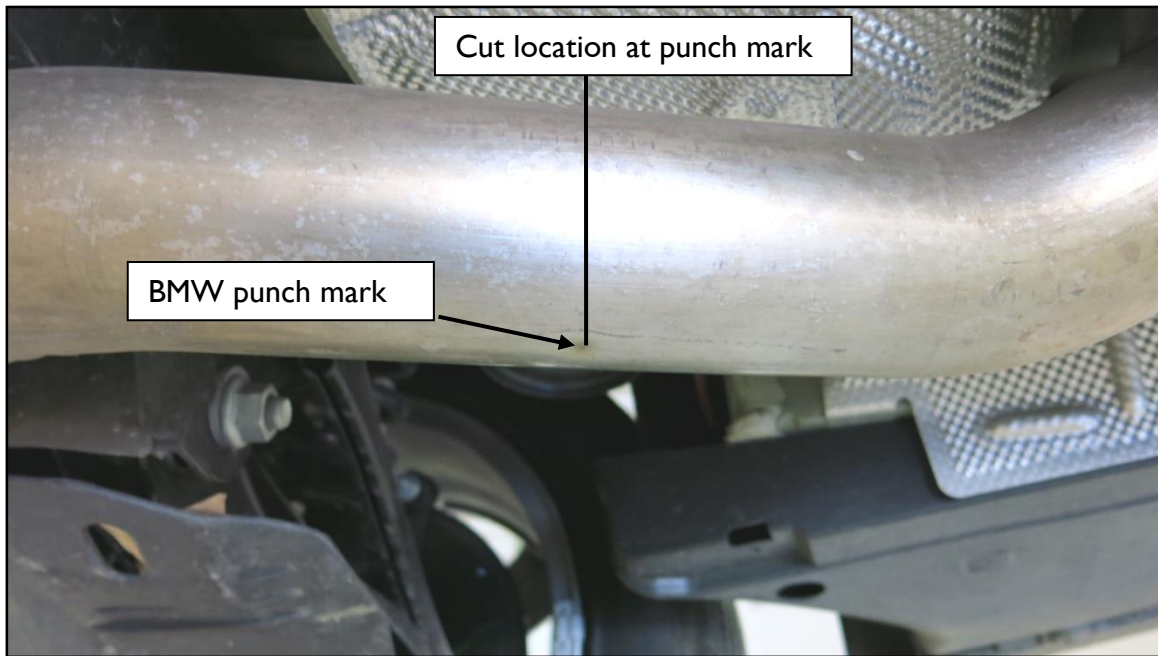
Thank you for purchasing a Dinan High Performance Muffler! Some mechanical skill is required to install this muffler. If you are not familiar with this procedure, we strongly recommend that you arrange for a qualified BMW repair facility to perform this installation.

INSTALLATION:

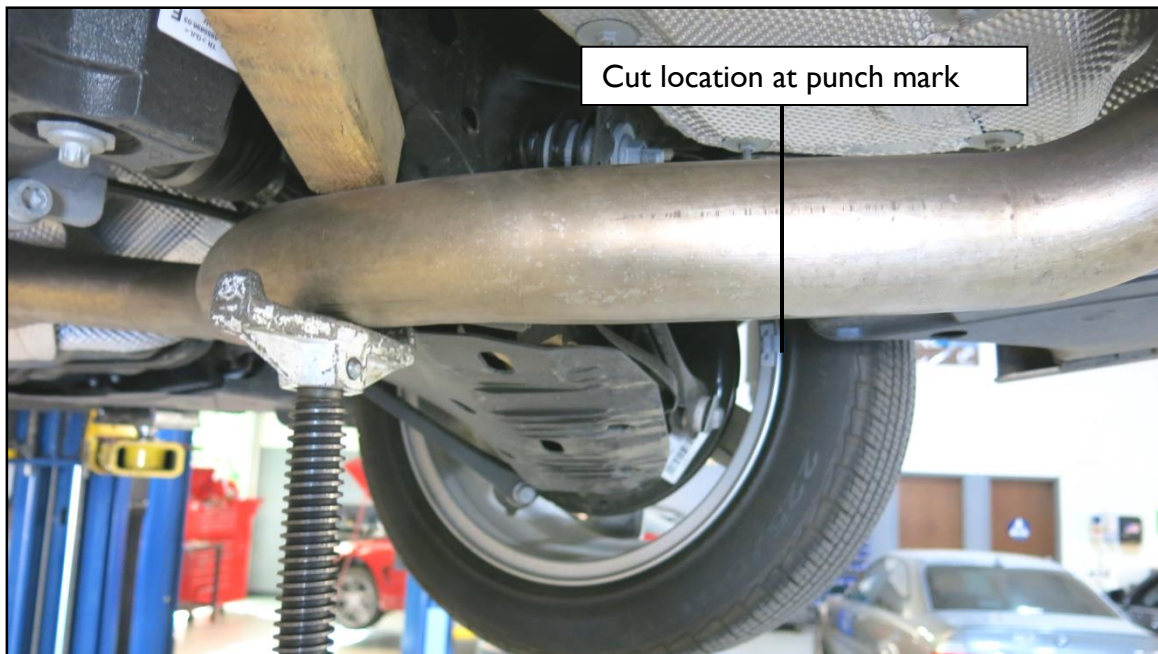
- I. The Dinan mufflers are relatively easy to install. They fit the same as a stock replacement muffler would.



2. Locate the stock BMW Punch mark on the underside of the inlet tube to the stock Muffler.



3. You will cut the stock muffler tube at the BMW factory punch mark.
4. Support the tube in front of the cut location with a jack or stand. Wedge a block of wood between the tube and the sub frame to hold the tube stable as you cut. Use a Sawzall or similar cutting tool.



5. Unplug the wire going to the valve on the outlet tube of the stock muffler.



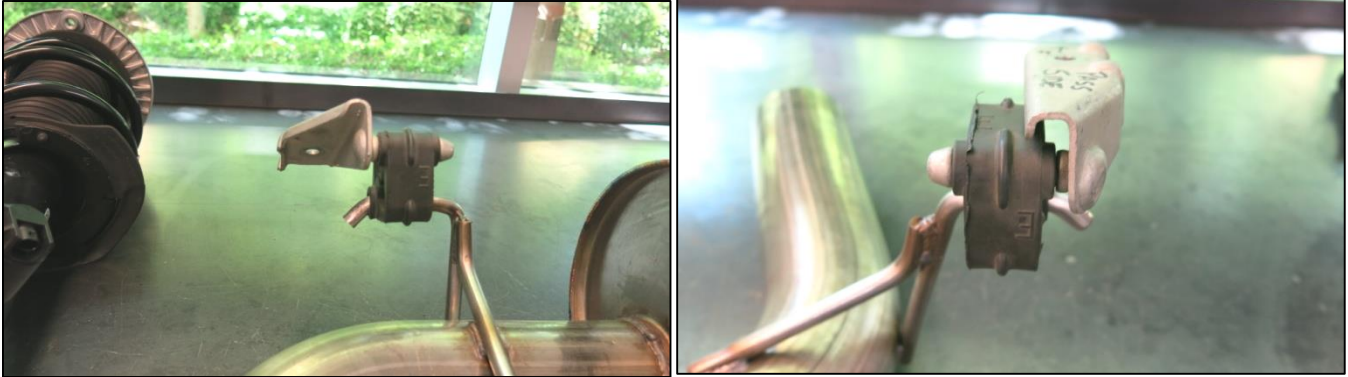
6. Support the stock muffler with a stand and remove the nut on each side of the muffler holding the hanger brackets to the chassis.



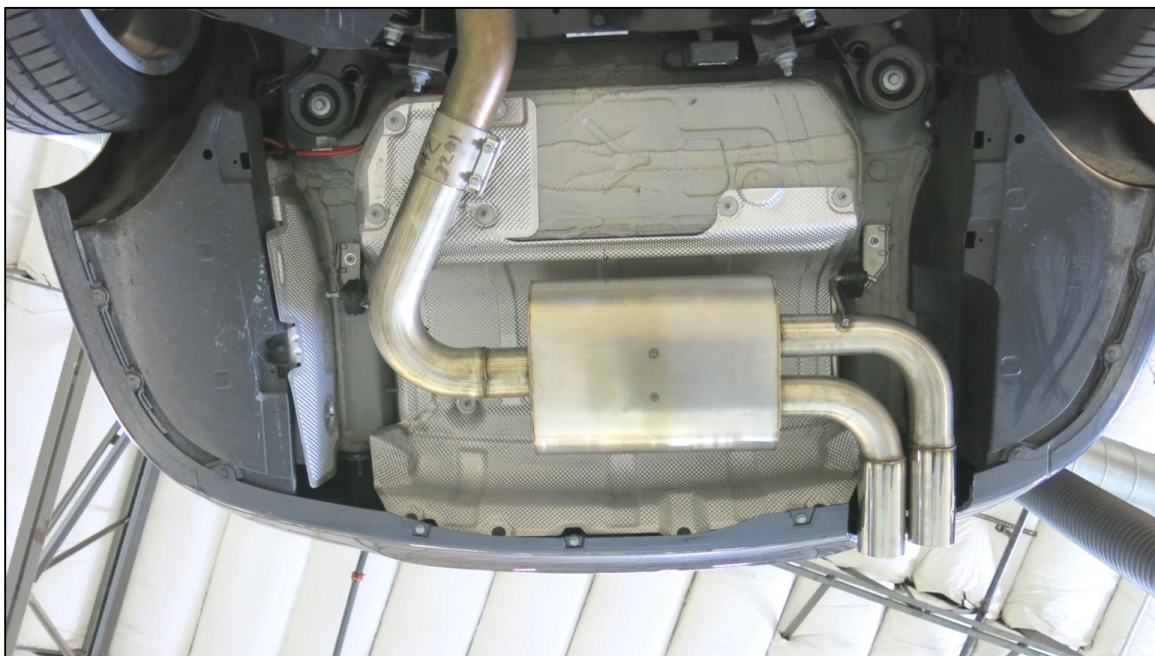
7. Lower muffler out of the car.
8. With the stock muffler on the bench, remove the three screws holding the valve actuator to the valve, and remove valve from the stock muffler. This valve will not be used on the Dinan muffler, but it will go back in the car.
9. Go back to the car and unclip the valve wire from the 2 clips holding it to the side cover.
10. Remove the 3 screws and 1 nut holding the left inner body side cover and let it hang down to give you access to a spot to zip tie the valve out of the way as shown.
11. Position the actuator with the wire connector down and the shaft pointing to the inside as shown. Plug in the wire and reinstall the side cover.



12. Transfer the muffler hangers to new mufflers as shown. Replace rubber hangers if needed.



13. Slide the included muffler tube clamp over the exhaust tube. Install muffler with the clamp evenly over the exhaust tube and muffler tube as shown, and gently snug the clamp bolts. Then finish hanging the muffler using the stock left and right hanger nuts.



14. Have a 2nd person or a stand to hold the tips centered and pushed up to the top of the opening in the bumper as shown. The tips should touch the top of the opening while you are tightening the clamp. Torque the clamp bolts as follows:
- Clamp with 10mm bolts = 45Nm (33 ft-lbs)
 - Clamp with 11mm bolts = 68Nm (50 ft-lbs)

