



FREEFLOW EXHAUST INSTALLATION INSTRUCTIONS

PART NUMBER D660-0078-BLK

APPLICATION: 2017-19 G30 540i & xDrive

Congratulations for being selective enough to use a Dinan Performance Exhaust. We have spent many hours developing this kit to assure that you will receive maximum performance and durability with minimum difficulty in installation. Please take the time to read these instructions and call us if you have any difficulties during the installation.

Please take the time to read these instructions thoroughly before proceeding. When performing the installation, read the entire numbered instruction before working on the car. If you feel that you do not have the requisite skill, please arrange for a qualified repair facility to perform the installation.

If you have any difficulties during the installation, or if these instructions are not clear to you, please call Dinan's Technical Support Staff at (800) 341-5480.

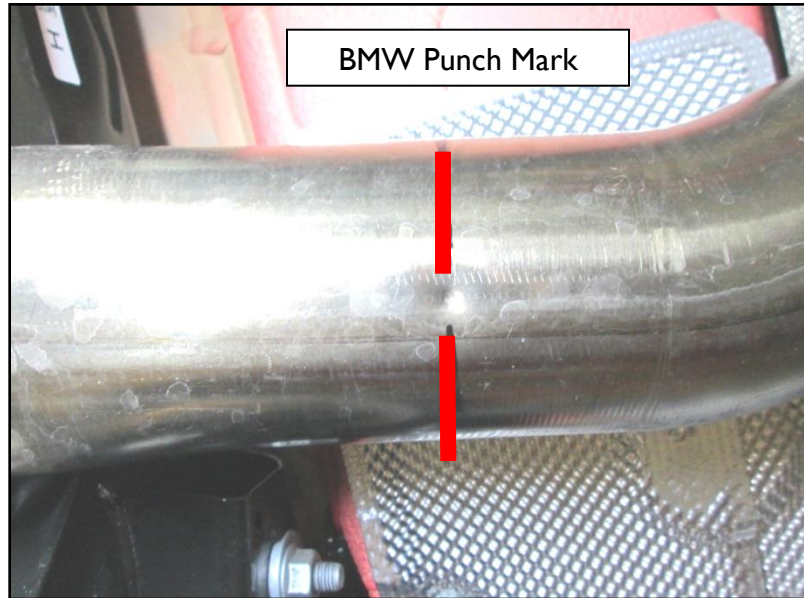
Note: If the car has been driven recently, it's best to let the vehicle cool down for approximately 10 minutes to avoid possible burns while installing the Dinan Performance Exhaust

PARTS LIST

Qty	Part #	Description
1	D663-0340-BLK	Muffler Assembly G30 540i
1	D663-0339	Hardware Kit
		Contains:
2	11 62 1 711 954	8mm Copper Nuts
3	D502151	Tie Strap
2	M8x20 Fender	Washer
1	18 30 7 560 782	Exhaust Clamp 85mm

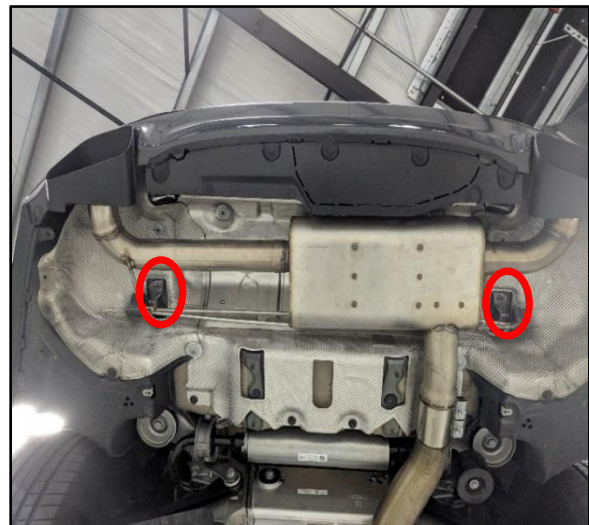
1. Removing the stock muffler:

- Support the muffler securely with a jack or a stand.
- Locate the punch mark on the exhaust pipe near the rear of the car.
- Cut on the punch mark of the exhaust pipe.



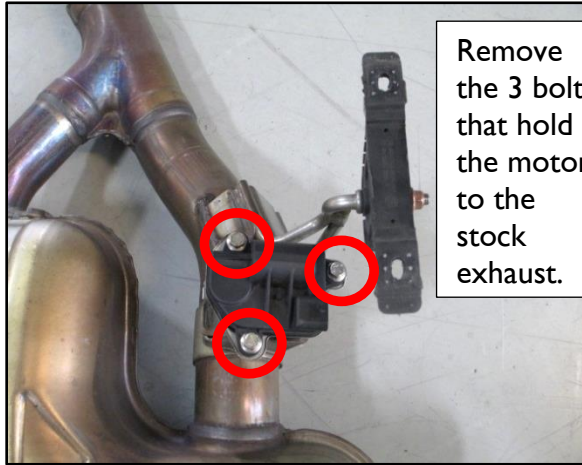
2. Removing the muffler from the vehicle:

- Unplug the exhaust valve and let the wires hang.
- Remove the 2 nuts from the hanger mounts on both sides.
- Remove the exhaust from the vehicle and set it aside.



3. Remove the exhaust valve motor:

- Unbolt the exhaust valve motor from the stock exhaust.
- Lightly pull on the harness mount that is attached to the heat shield until it unclips.

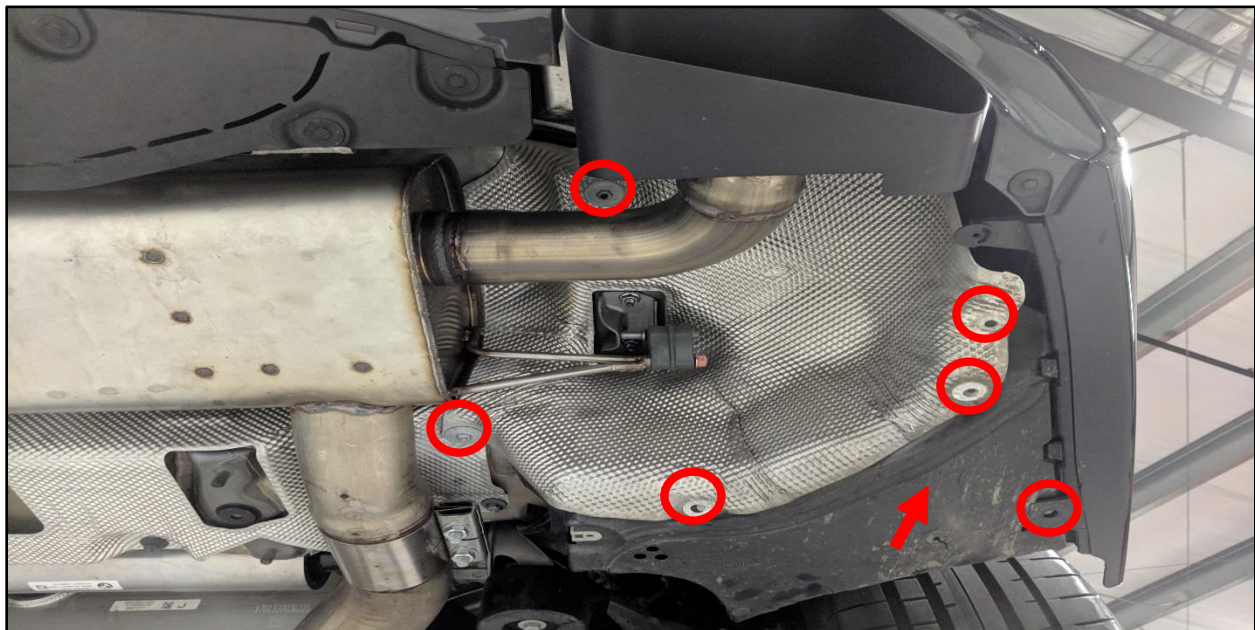


Remove the 3 bolts that hold the motor to the stock exhaust.

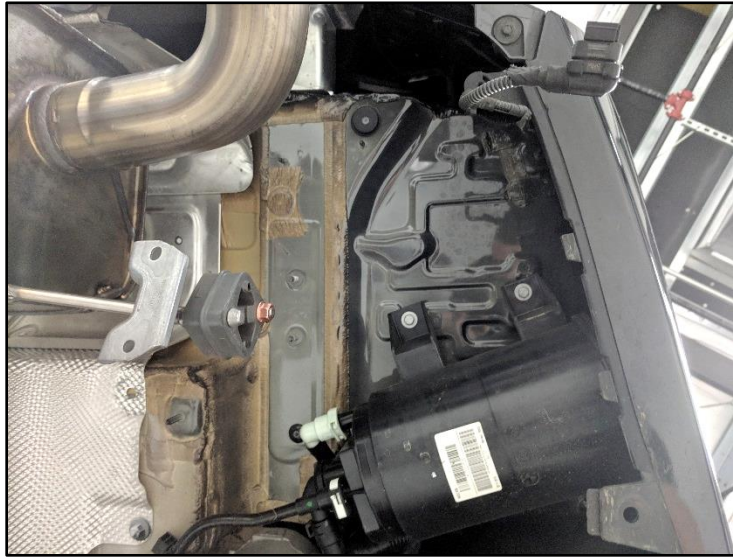


4. Remove the heat shield on the passenger side:

- Remove the 7 screws holding the shield and trim in place.
- Remove the heat shield and set it aside (exhaust has not been removed in the photo below).
- Then move the black trim out of the way.



5. With the two panels removed, you should see this.



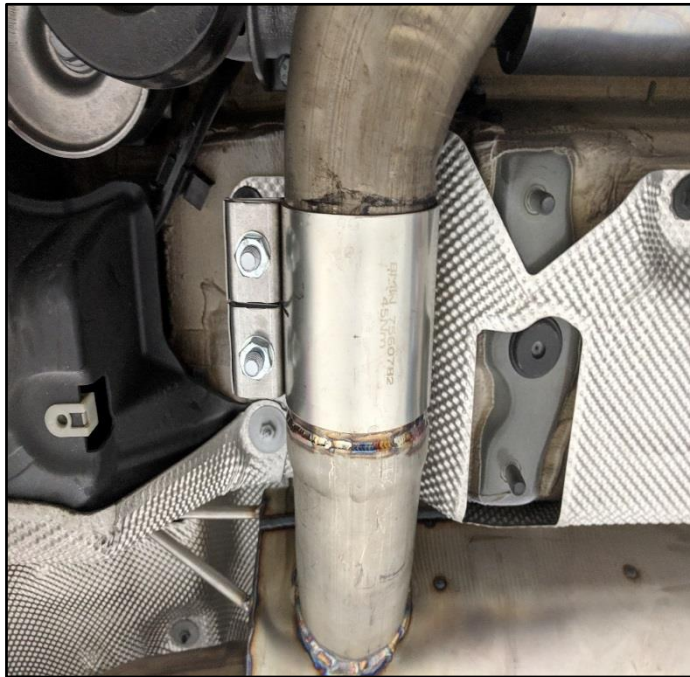
6. Relocate the exhaust valve motor:

- Using the provided zip-ties, firmly secure the motor to the outermost bracket.
- Ensure the motor cannot rattle or vibrate.
- Reconnect the harness to the motor.
- Reattach the trim panels. Ensure the panels are not contacting the motor.



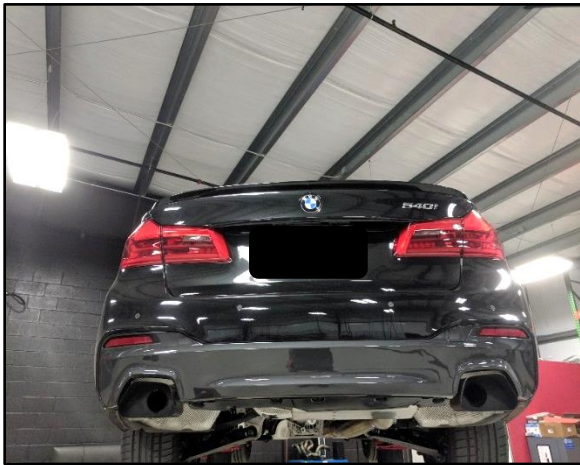
7. Installing your DINAN muffler:

- Transfer the hangers from the stock exhaust to the Dinan exhaust. Secure with the included copper locknuts and washers.
- Slip the clamp on to the mid-pipe with the nuts pointing down to the ground and the flange out towards the passenger side (see photo below).
- Lift the Dinan muffler into place and slide the muffler inlet tube into the clamp.
- Install the stock nuts for the hanger mounts, to fully suspend the muffler.



8. Adjust the exhaust tips:

- An assistant may be needed for this step.
- Push both exhaust tips up at the same time.
- Adjust the muffler position until the tips are aligned side to side with the bumper openings.
- Tighten the exhaust clamp to 45Nm (33ft-lbs)
- Ensure the logos align with the bumper cutout. When the exhaust is cold, it is normal for the logos to be partially hidden.
- Repeat this step as necessary until the fitment is correct.



Happy motoring!