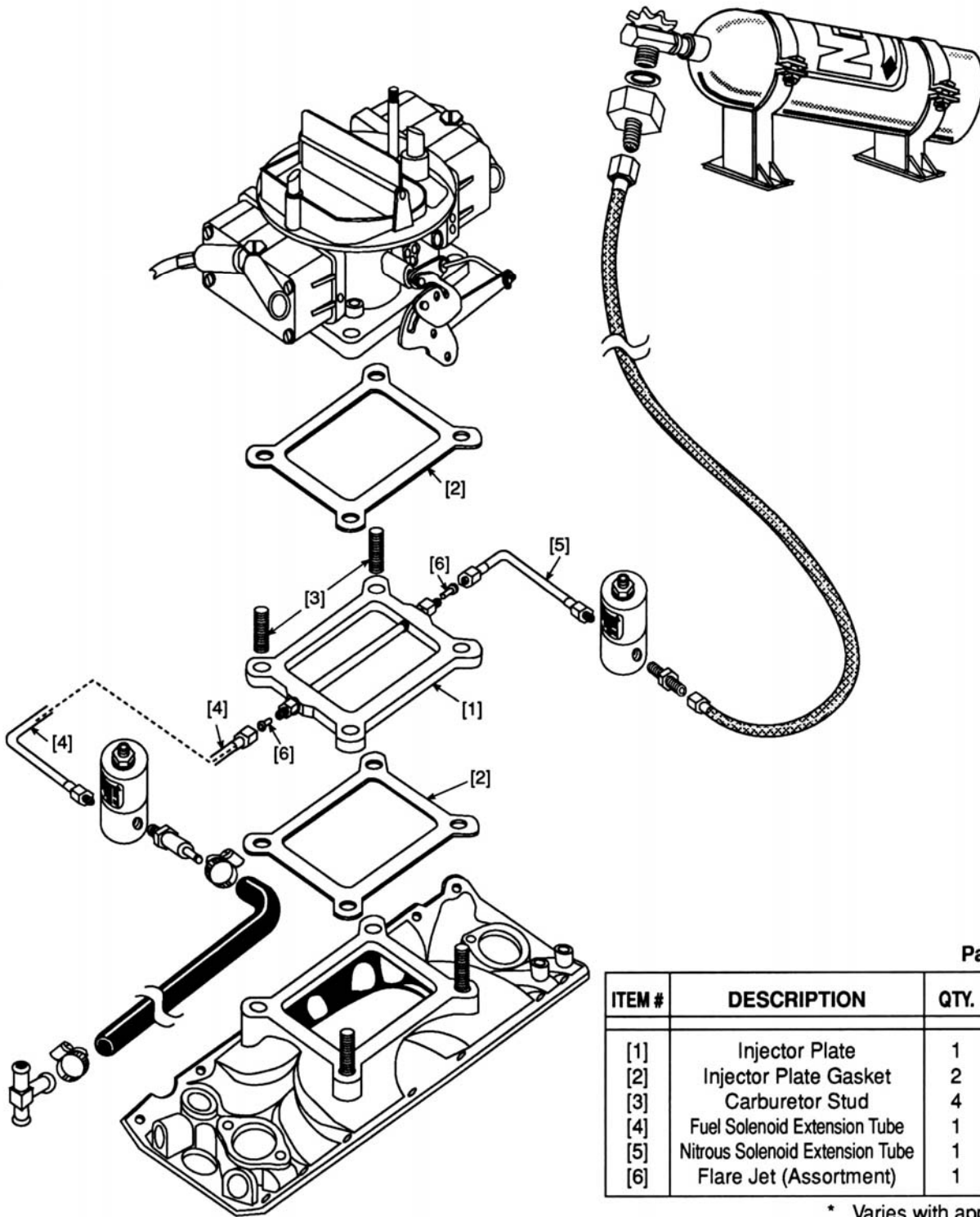


A Holley Performance Brand

**NOS Super Powershot—Single Carburetor Injector Plate
Installation Instructions for NOS P/N 12530NOS, 12830NOS,
12930NOS, 13063NOS, & 13064NOS**

Instruction P/N A5067-SNOS



Parts List

ITEM #	DESCRIPTION	QTY.	P/N
[1]	Injector Plate	1	*
[2]	Injector Plate Gasket	2	*
[3]	Carburetor Stud	4	*
[4]	Fuel Solenoid Extension Tube	1	16860
[5]	Nitrous Solenoid Extension Tube	1	16861
[6]	Flare Jet (Assortment)	1	-

* Varies with application.

1.0 Injector Plate Mounting

1. Remove the carburetor inlet ducting and air cleaner.
2. Disconnect the throttle linkage from carburetor.

3. Disconnect the fuel line from the carburetor.
4. Remove the carburetor.
5. Remove the stock carburetor studs.
6. Install the extended carburetor studs [3].
7. Install the injector plate [1] and gaskets [2] on the intake manifold with the **NOS label facing UP**.
8. Install the carburetor.
9. Connect the throttle linkage.

2.0 Nitrous Solenoid Installation

1. Clamp the nitrous solenoid base in a bench vise.
2. Install the nitrous filter fitting in the inlet port of the nitrous solenoid.
3. Install the 1/8-inch NPT compression fitting/nitrous solenoid extension tube [5] in the outlet port of the nitrous solenoid.
4. Remove the nitrous solenoid assembly from the vise.
5. Install the proper nitrous jet [6] in the injector plate, with the beveled edge out.

NOTE: The extension tube may need to be shortened, depending on the application.

6. Connect and tighten the nitrous solenoid and extension tube assembly.

3.0 Fuel Solenoid Installation

CAUTION: Do not overtighten the vise in the following procedure or the solenoid will be damaged.

1. Clamp the fuel solenoid base in a bench vise.
2. Install the fuel filter fitting in the inlet port of the fuel solenoid.
3. Install the 1/8-inch NPT compression fitting/fuel solenoid extension tube [4] in the outlet port of the fuel solenoid.
4. Remove the fuel solenoid assembly from the vise.
5. Install the proper fuel jet [6] in the injector plate, with the beveled edge out.

NOTE: The extension tube may need to be shortened, depending on the application.

6. Connect and tighten the fuel solenoid and extension tube assembly.

Suggested Tuning Combinations for NOS Super Powershot—Single Carburetor System

NOTE: Your combination may vary. These guidelines are suggested as a safe starting point in tuning.

H.P Level	Jetting N20 / Fuel	Fuel Quality	Ignition Timing	Spark Plug Heat Range
100	47 / 53	92+ octane pump gas	Standard	Standard
125	55 / 61	92+ octane pump gas with octane booster	Standard to 2° ignition retard	Standard to 1 heat range colder
175	73 / 82	92+ octane pump gas with octane booster or 100+ octane (R+M/2) racing fuel	2 - 4 ignition retard	Decrease heat range 1 - 2 steps

At the 73/82 jetting level, the Super Powershot nitrous solenoid is flowing near maximum capability. Increasing the jetting above these levels may result in a slight performance increase. If you need performance greater than the 73/82 level delivers, contact NOS Technical Support for information on higher-flow-rate solenoids.

NOS Technical Service
Phone: 1-270-781-9741
Toll-Free Phone: 1-866-GOHOLLEY
Fax: 1-270-781-9772

For online help, please refer to the Tech Service section of our website: www.holley.com

A5067-SNOS
Date: 8-30-04